

MadisonAF23

By: burdastyle

<http://www.burdastyle.com/projects/madisonaf23>



The Madison is based on MadisonAF23's Kangaroo Pocket Dress. Her design was suggested so much by our community that we created a BurdaStyle pattern after her design. The dress features roomy kangaroo pockets and a wonderfully sculptural collar that, if made in the right material, can create all sorts of shapes.

Materials

Satin, Zipper

Step 1

**burda Download-Pattern
6052 - Instructions**

●●●●
mittel normal weit

burda sizes		55 ins / 140 cm							
		34	36	38	40	42	44	46	
Dress	yds							2 1/4	
	m							2,00	

→ with nap

Baumwollstoffe, Kreppstoffe

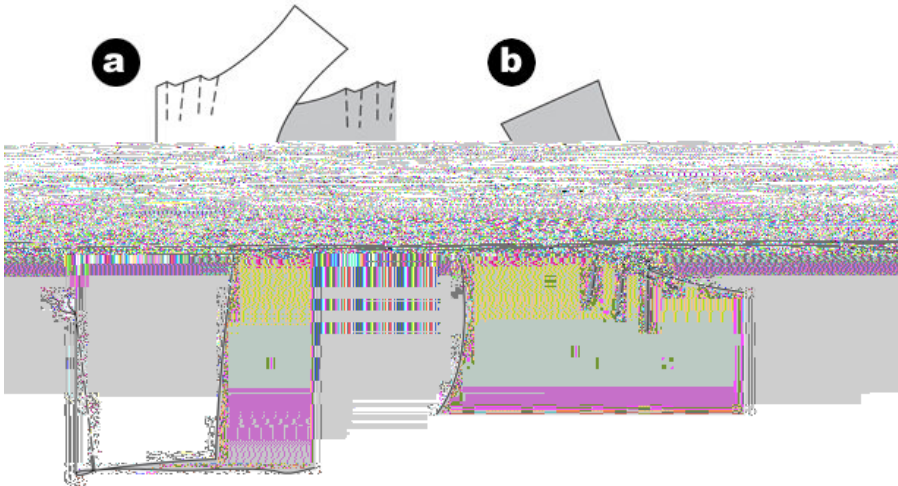
Patternpieces:

PATTERN

- 1 Front piece 1x
- 2 Back piece 1x
- 3 Front skirt panel 1x
- 4 Pocket pouch 2x
- 5 Hip yoke piece 1x
- 6 Back skirt panel 1x
- 7 Front collar piece 1x
- 8 Back collar piece 1x
- 9 Armhole placket 2x
- 10 Bias strip / armhole 2x
- 11 Slit facing 1x

Fabrics: Cotton fabrics, crepe fabrics

Step 2



The patterns can be printed out at the copy shop. If you decide to print them at home, follow the instructions:
Paper cut for ANSI A (German DIN A4) prints:
The patterns are printed out on 28 sheets with a thin frame. Wait until all sheets are printed out. Arrange the sheets so that they fit together (see additional page with the overview of the prints). Fold the single sheets on the upper and right edge along the thin frame lines. Begin with the left lower sheet and then tape the frame lines together precisely.

Step 3

ADJUST PATTERN SIZES

Select your size according to the Burda-dimension table: dresses, blouses, jackets and coats according to the bust size, trousers and skirts according to the hip width. Change the pattern to fit your measurements if they deviate from the Burda-size chart. Cut out the pattern pieces 1 to 11 for the dress according to your size. Refer to our 'Adjust patterns for mixed sizes' technique

LENGTHENING OR SHORTENING THE PATTERN PIECES

Our pattern is calculated for a height of 5â€™ 6â€™ (168 cm). If you are taller or shorter, you can adjust the pattern pieces along the lines marked “lengthen or shorten here”. This way the proper fit is maintained. Always adjust all pattern pieces along the same line to the same degree.

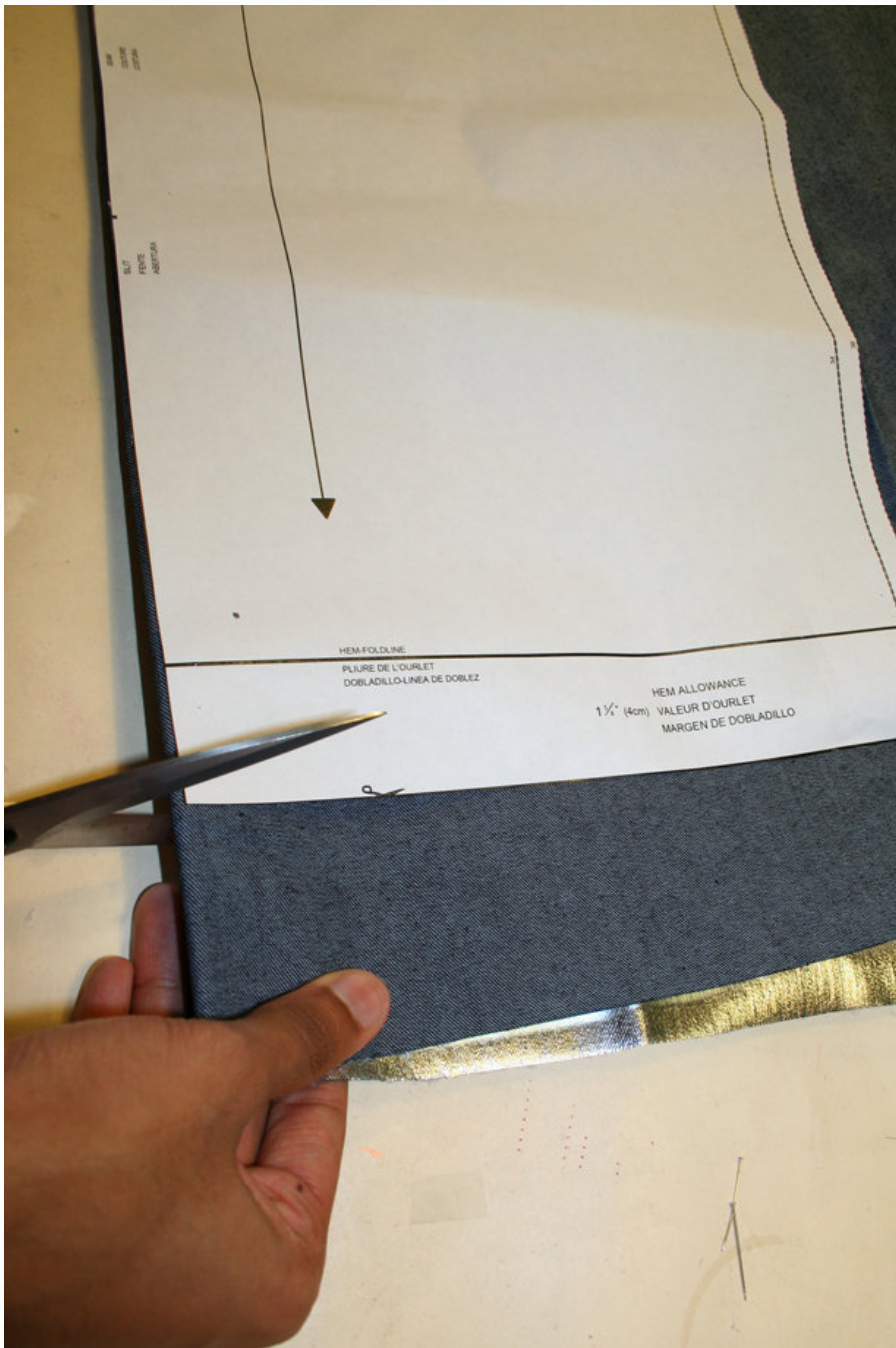
How to lengthen and shorten pattern pieces:

Cut the pattern pieces along the marked lines

To lengthen, slide the two halves of the pattern piece as far apart as necessary.

To shorten, overlap the two halves of the pattern piece as far as necessary. Blend the side edges.

Step 4



CUTTING OUT

FOLD () means: Cut on the fold, the fold being the center of the pattern piece, but never a cut edge or seam. The piece should be cut double, with the fold line forming the center line. Pattern pieces that are outlined with a broken line in the cutting diagrams are to be placed face down on the fabric. The cutting diagrams on the pattern sheet show how the pattern pieces should be placed on the fabric.

The cutting diagrams show the placement of the pattern on the fabric.

For a single layer of fabric, the pattern pieces are pinned to the right side. For double layers of fabric, the right sides are facing and the pattern pieces are pinned to the wrong side. The pattern pieces that are shown extending over the fold of the fabric in the cutting diagram should be cut last from a single layer of fabric.

Step 5

SEAM AND HEMLINE ALLOWANCES are included on an average:

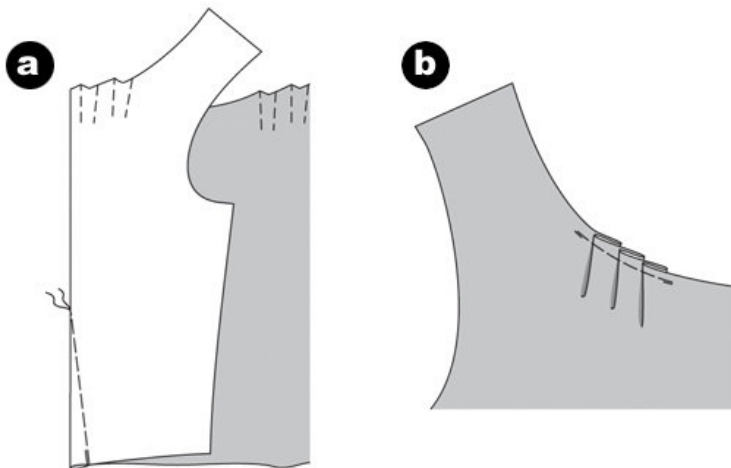
1 5/8" (4 cm) for hem, 5/8" (1.5 cm) for all edges and stitches. Using BURDA copying paper, transfer the lines and signs of the pattern onto the wrong side of the fabric. Instructions can be found in the packaging.

Sewing

While sewing, the right sides of the fabric are facing.

Transfer all lines of the pattern onto the right side of the fabric using basting stitches.

Step 6



DRESS / TOP PIECE

Waist darts

Pin the darts at the front piece and stitch to a point. Knot thread ends. Press the darts towards the front center. Stitch the darts at the back piece in the same way and press towards the back center. (a)

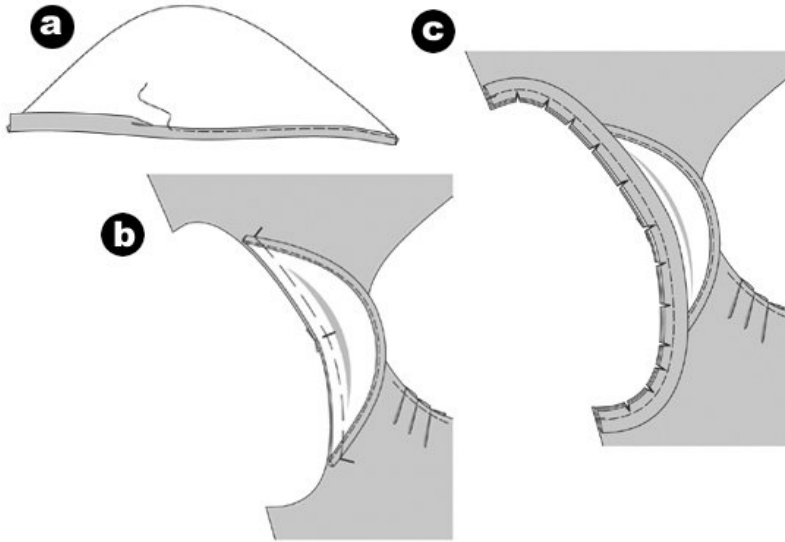
PLEATS / FRONT PIECE

Fold the pleats along the right side of the front neckline edge according to the arrow. Pin the pleats and stitch along the allowance. (b)

SHOULDER SEAMS

Position the front and back piece together, right sides facing. Pin the shoulder seams (seam number 1) and stitch. Neaten allowances and press apart.

Step 7



ARMHOLE PLACKETETS

Fold the allowance of the bottom edge and press. Turn again and pin. Topstitch the allowance narrowly. (a)

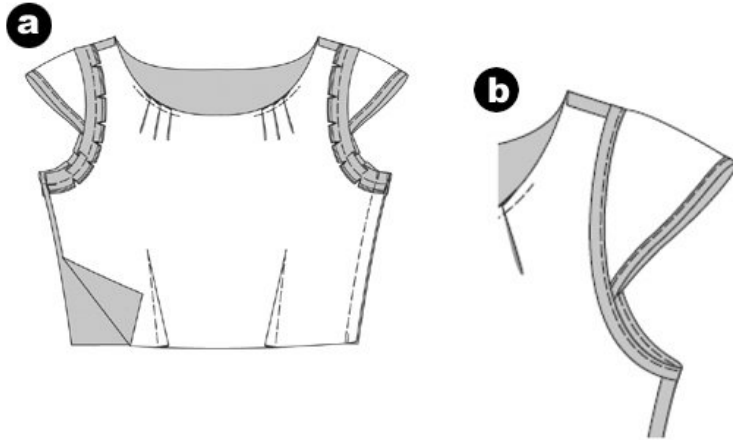
Position the plackets onto the armholes (seam number 2) between the cross lines, right sides facing. The placket's cross line meets the shoulder seam. (b)

ARMHOLES / BIAS STRIPS

Fold the bias strips lengthwise, wrong sides facing. Press.

Position the bias strips above the placket onto the armhole, right sides facing, the raw edges are positioned on the allowance. Stitch the bias strips. Trim allowances and snip in. Press the bias strips and plackets inside the armhole. Press allowances to the inside of the dress. ©

Step 8

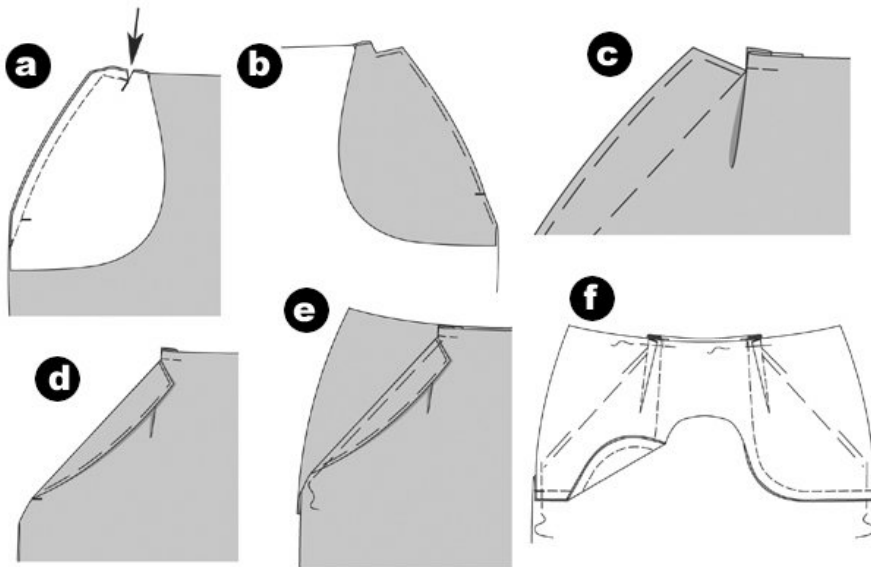


SIDE SEAMS / LEFT SLIT

Position the front and back piece together, right sides facing. Pin the right side seam (seam number 3). Neaten allowances and press apart. (a)

Turn the bias strip to the inside and press. Topstitch the armhole edges and placket seam lines narrowly, enclosing the bias strip. (b)

Step 9



SKIRT

Stitch the darts along the back skirt panel and press towards the center back.

HIP YOKE POCKETS

Position the pocket pouches on the front skirt panel. Pin the edges between the cross lines (seam number 4) and stitch. Trim allowances, cut the corners at an angle. Snip in at the cross line, close to the seam line

(arrow). (a)

Flip pocket pouches inside and pin. Press the edges. (b) Position the pleats at the front skirt panel according to the arrow, pin ☺.

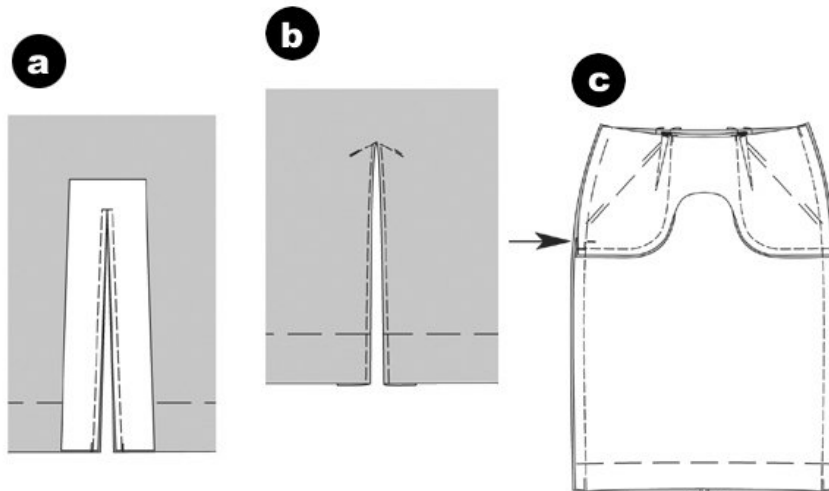
Flip the skirt panels along the fold line outwards, press. (d)

Stitch the darts of the hip yoke pieces and press towards the center front.

Position the front skirt panel onto the hip yoke piece so that the pocket opening meets the marked line, right sides of pocket pouch and yoke piece are facing. Pin pocket openings. (e)

Pin pocket pouches onto the hip yoke piece, NOT enclosing the skirt panel. Stitch. Neaten allowances. Pin the side and top edges of the hip yoke piece onto the skirt panel. (f)

Step 10



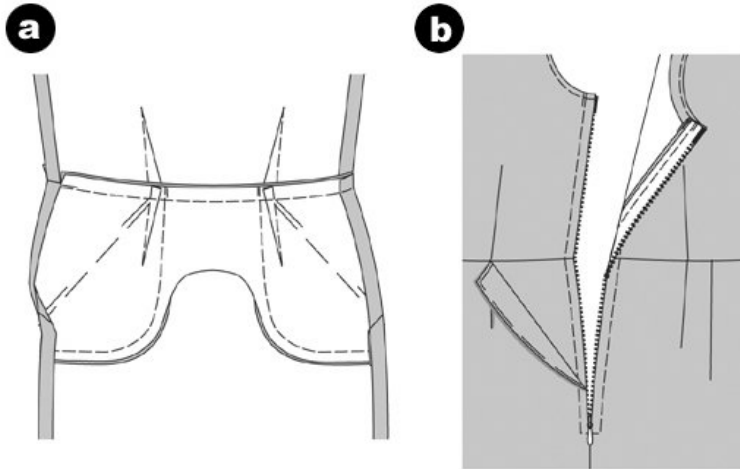
SLIT ON THE BACK

Neaten the slit facing and pin above the marked slit, right sides facing. Stitch the slit as marked. (a) At the end of the slit, stitch 2 small lines across. Snip in between the stitch lines. Turn the facing inside and press. Topstitch the slit narrowly. At the slit ends, stitch at a slant (b).

SIDE SEAMS / SLIT TO THE LEFT

Position the front and back skirt panels together, right sides facing. Pin side seams (seam number 5) and stitch. IMPORTANT: stitch the left side seam from the slit sign to the bottom (arrow). Secure seam ends. Keep slit pinned. Neaten allowances and press apart. Open the slit. ☺

Step 11



STITCH SKIRT

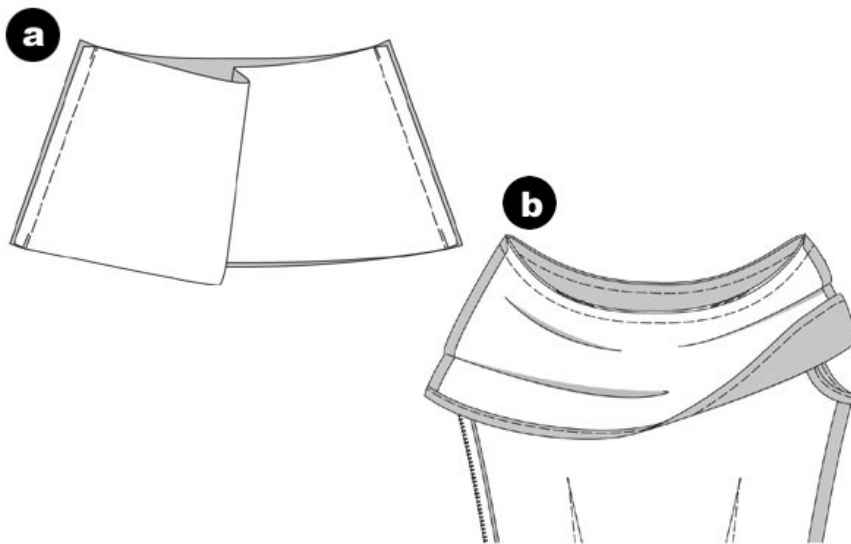
Position the skirt and the top piece together (seam number 6). Side seams meet. Stitch. Trim allowances, neaten and press inside the top piece. (a)

ZIPPER

Turn the slit allowances to the inside.

Pin the zipper strips under the slit edges so that the little zipper teeth are hidden. Fold the end of the strips inside. Stitch the zipper using a zipper foot for your sewing machine. (b)

Step 12



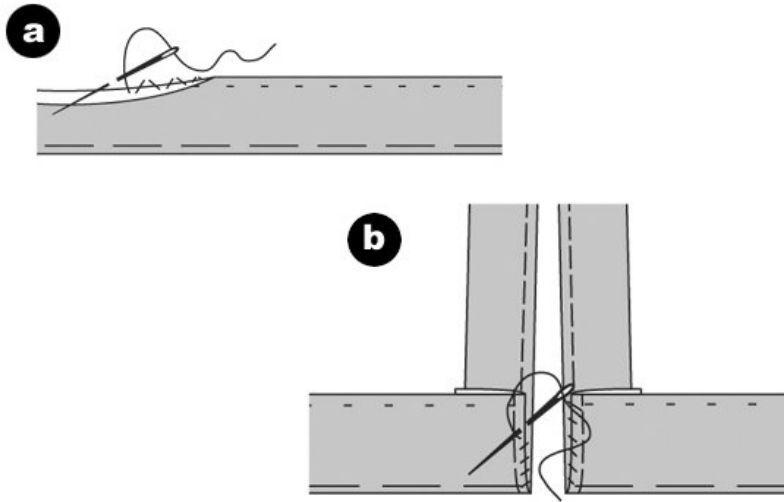
COLLAR

Position the collar pieces together, right sides facing (seam number 7). Neaten allowances and press apart. Turn the allowances of the bottom collar edge inside and press. Fold the edges again and press. Topstitch the

allowances. (a)

Turn the dress inside out. Position the right side of the collar onto the left side of the neckline; the side seams meet the shoulder seams. Stitch. Trim allowances and neaten. Turn the collar through the neckline to the right side of the dress. (b)

Step 13



HEMLINE

Neaten the hemline, fold inside and press. Sew the hemline by hand (a). Sew the hemline onto the slit edges (b). Try the dress on. Pin the left collar edge onto the shoulder seam. Sew buttons on the side seam of the collar, enclosing the dress.

BurdaStyle

MadisonAF23