

01/2012 Long sleeve dress with front flounce

By: burda style magazine

<http://www.burdastyle.com/projects/012012-long-sleeve-dress-with>



Long sleeve dress with front flounce burda style magazine patterns FAQ

Materials

Faconne

Step 1 — Preparation



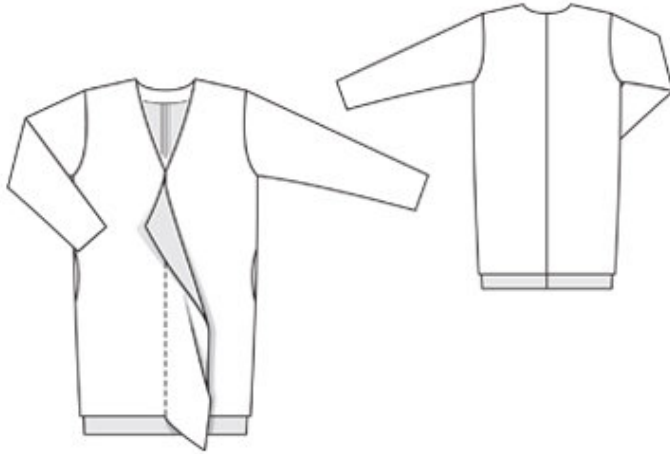
Paper cut for ANSI A (German DIN A4) prints:

This pattern is printed on 8.5 × 11 sheets of plain paper. Do not scale or center pages before printing. Wait until all sheets are printed out before beginning to tape them together. **Do not cut out pattern pieces yet**— Arrange the sheets on a large, hard, flat surface so that they fit together, matching up like numbers and letters (i.e. 6A to 6A). To tape pattern together, fold under the margin of one piece (6A) and tape right against the line of it's matching number/letter (6A).

burda style magazine pattern do not have seam allowance included.

Seam and hem allowances to be added: Seams and edges 1.5 cm (5/8 in).

Step 2 — Cutting out



- 21right front with flounce 1x
 - 21left front 1x
 - 22back 2x
 - 23sleeve 2x
 - 24front neck facing, on a fold 1x
 - 25back neck facing, on a fold 1x
- Interfacing: Iron to facing pieces.
-

Step 3 — Darts

For sizes 42, 44, and 46, stitch bust darts. Press darts up.

Step 4 — Back

Stitch centre back seam. Press seam allowances open.

Step 5 — Flounce

On right front piece, topstitch edges of cut-on flounce close to seam line, beginning at centre front. Clip seam allowance at each end of seam (centre front) and trim away allowances on flounce edges.

Step 6 — Facings

Pin right front to left front, with wrong side facing right side, matching centre fronts. Stitch front pieces together along centre front, beginning at upper edge, exactly at marked neck edge.

Step 7 — Shoulder seams

Stitch shoulder seam on blouse and on neck facing.

Step 8 — Sleeves

Stitch sleeves to edges of armholes. Trim seam allowances, neaten together, and press toward sleeves.

Step 9 — Side seams

Stitch side seams and sleeve seams as continuous seams.

Step 10 — Hem

Press hem allowances on blouse and sleeves to inside and sew in place by hand.

Step 11 — Neck edge

Pin facing to neck edge, right sides facing. Stitch along marked line of neck edge. Trim seam allowances. Clip facing allowance at centre front. Turn facing up and stitch to seam allowances, close to seam. Turn facing to inside and sew to seams.

Step 12 — Neck edge

Pin facing to neck edge, right sides facing. Stitch along marked line of neck edge. Trim seam allowances. Clip facing allowance at centre front. Turn facing up and stitch to seam allowances, close to seam. Turn facing to inside and sew to seams.

BurdaStyle

01/2012 Long sleeve dress with front flounce