

Button-up Vest 04/2012

By: burda style magazine

<http://www.burdastyle.com/projects/button-up-vest-042012>



This children's vest is the perfect addition to any outfit. It has an asymmetrical button-up closure with bound edges to add a contrast fabric. You could add sleeves and make it into a jacket !

Materials

Height 110, 116, 122, 128, 134 cm Back length 38 40 42 44 46 cm (15 15 3/4 16 1/2 17 1/4 18 1/8 ins)

NOTE: This pattern does not include seam allowance. See the instructions for more information.

Step 1 — Preparations



This pattern is printed on 8.5 × 11 sheets of plain paper. Do not scale or center pages before printing. Wait until all sheets are printed out before beginning to tape them together. **Do not cut out pattern pieces yet**— Arrange the sheets on a large, hard, flat surface so that they fit together, matching up like numbers and letters (i.e. 6A to 6A). To tape pattern together, fold under the margin of one piece (6A) and tape right against the line of it's matching number/letter (6A).

Trace the pattern pieces from the pattern sheet following the lines and markings for the correct size and the correct style (142). (This pattern also includes pattern pieces, lines and markings for style 143 that should be ignored.)

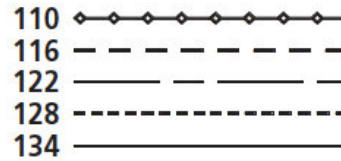
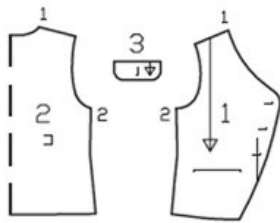
The buttonholes on piece 1 are marked for size 110. For sizes 116-134, mark the top buttonhole the same distance from neck edge as for size 110. The bottom buttonhole is the same for all sizes. Centre the other buttonhole in between.

burda style magazine pattern do not have seam allowance included.

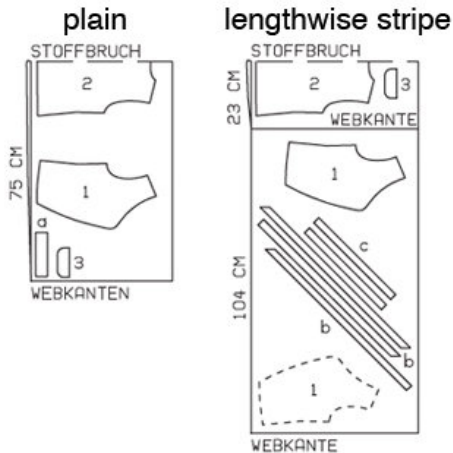
Seam and hem allowances to be added: Seams and edges 1.5 cm (5/8 in).

Step 2 — Cutting Out

Pattern pieces 1 to 3



Cut the pieces as in this diagram with a fabric width of 150 cm



Stoffbruch = Fabric Fold
Webkanten = Selvage

Plain fabric:

- 1 outer front 2x
- 2 outer back, on a fold 1x
- 3 flap 2x

Also draft and cut the following pieces, not included in the pattern sheet

- a) right half-belt piece, 10 cm (4 ins) long, left half-belt piece 15 cm (6 ins) long, both 4 cm (1 1/2 ins) wide, finished width 2 cm (3/4 in).

Striped fabric:

- 1 inside front 2x
- 2 inside back, on a fold 1x
- 3 flap 2x

Also draft and cut the following pieces, not included in the pattern sheet

- b) bias binding strip for neck, front, and hem edges
length: 180 180 190 195 200 cm (71 71 75 76 3/4 78 3/4 ins),
width: 2.5 cm (1 in) (incl. allowances),
- c) 2 bias binding strips for armholes,
length: 37 38 39 40 41 cm (14 1/2 15 15 1/2 15 3/4 16 1/4 ins),
width: 2.5 cm (1 in) (incl. allowances)

Step 3 — Sewing



Stitch side seams and shoulder seams on outer and inner front and back pieces. Press seams open.

Lay outer and inner fronts and backs together, wrong sides facing. Baste edges together, next to seam allowances. Trim away seam allowances. Stitch bias strips (b) together, to one long strip. Iron bonding web strip to outer side of waistcoat edges, ending strips at corners and along curves and cutting a new strip to continue. Baste bias strips to inner side of waistcoat edges so that they extend 1 cm (3/8 in) wide. Make diagonal folds at pointed corners and ease inside edge at rounded corners.

On armholes and on lower edge, turn strip ends under at side seams. Remove backing paper from bonding web. Fold bias strips over edges and iron in place. Work from right side of garment to stitch 2 mm (a scant 1/8 in) from edges of binding. On inside, carefully trim edge of strip 2 mm (a scant 1/8 in) from stitching.

Stitch pairs of flap pieces (top and bottom) right sides together on side and lower edges. Trim seam allowances. Turn right side out. Use buttonhole thread to hand sew running stitches, approx. 5 mm (3/16 in) long, 3 mm (1/8 in) from flap edges. Work a buttonhole in each flap. Stitch flaps to fronts (joining lines), press down, and stitch again close to joining seam.

Work buttonholes in right front.

Fold each half-belt piece length wise, right side facing in. Stitch along long edges and across one end. Turn right side out. Stitch open ends of half-belt pieces to waistcoat back, as marked half-belt pieces point toward sides. Turn half-belt pieces toward centre. On attachment edge, stitch a square of stitching and crosswise. Fold end of right half-belt through two D-rings, 2 cm (3/4 in) wide, and stitch in place.

BurdaStyle

Button-up Vest 04/2012