

5/2011 Bustier Dress with Draped Detail

By: burda style magazine

<http://www.burdastyle.com/projects/52011-bustier-dress-with-drape>



Bustier Dress with Draped Detail burda style magazine patterns FAQ

Materials

Duchesse

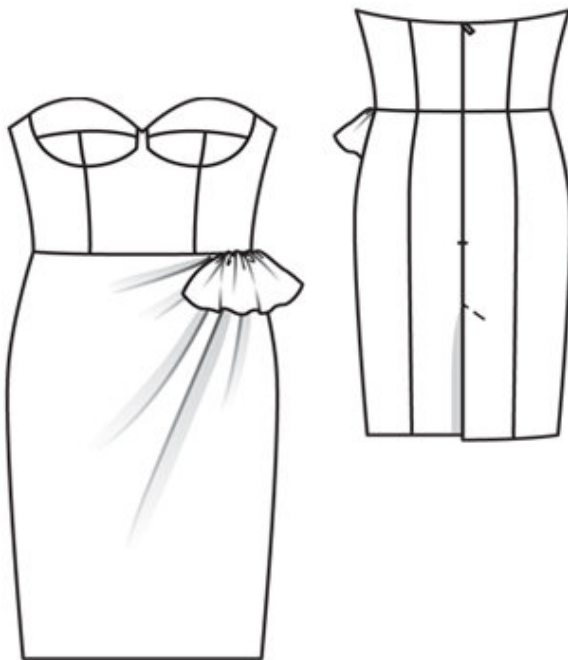
Step 1 — Preparation

Trace the pattern pieces from the pattern sheet. Note different lines at right and left edges of back vent but cut skirt panels the same size initially from the double layer of fabric.

Seam and hem allowances:

Seams and edges 1.5 cm (5/8 in), bust piece seams and lower edge of bust pieces 1 cm (3/8 in), curved joining edges of front pieces 1 cm (3/8 in), hem 4 cm (15/8 ins), no allowance on lower edge of inside front skirt piece.

Step 2 — Cutting Out



Duchesse:

- â— 1upper bust piece 4x
- â— 2lower centre bust piece 4x
- â— 3lower side bust piece 4x
- â— 4centre front, on a fold 1x
- â— 5side front 2x
- â— 6centre back 2x
- â— 7side back 2x
- â— 8front skirt panel
- â— with draped piece 1x
- â— 9inside front skirt panel,
- â— on a fold 1x

10centre back skirt panel 2x
11side back skirt panel 2x
Lining: pieces 4 to 7.
Interfacing: See pattern layout.

Step 3 — Stitch side front pieces to centre front piece

Stitch side front pieces to centre front piece. Stitch side back pieces to centre back pieces. Press seam allowances open.

Step 4 — Stitch lower centre bust pieces to lower side bust pieces

Stitch lower centre bust pieces to lower side bust pieces. Press seam allowances open. Stitch upper bust pieces to lower bust pieces. Press seam allowances open. Stitch lower edge of bust pieces to curved joining edges of front piece from corner (seam number 4). Clip seam allowance of front into corners. Stitch front edge of bust pieces to front. Press allowances of joining seams onto front.

Step 5 — Stitch side seams of dress bodice

Stitch side seams of dress bodice.

Step 6 — Skirt

On skirt front, turn facing of integrated draped piece to outside, along fold line. Stitch short side edges together, up to marked stitching line. Trim seam allowances and clip at seam ends. Turn draped piece right side out. Press faced edges but do not press fold edge. Baste inside edge of facing in place. Gather draped piece along marked stitching line to a width of 5 cm (2 ins). Turn draped piece down onto right fabric side of skirt and pin in place. Stitch darts in inside front skirt panel. Press darts toward centre. Lay skirt front piece on inside skirt front piece, with wrong side facing right side — hem allowance of front skirt piece extends. Baste side seam edges and upper skirt edges together, up to draped piece. Stitch back section seams and side seams on skirt.

Step 7 — Stitch skirt to dress bodice

Stitch skirt to dress bodice, in the area of the draped piece catching only the inside skirt piece. Press seam allowances up. Turn draped piece up. Pin marked stitching line to skirt joining seam, and stitch.

Step 8 — Zipper

Sew invisible zip to edges of back slit, up to marking. Stitch centre back seam from vent to zip. Press seam allowances open. Press facing on right edge of opening to inside and trim away, 1.5 cm (5/8 in) from marked — right edge — line. Lay left underlap toward right back piece and, to prevent needing to clip, press allowance of left back piece under, above vent, tapering the allowance. Press facing to inside on fold line.

Step 9 — Hem

Unfold facings at hem. Press hem allowance to inside and sew in place by hand. Turn facings to inside again and sew to hem edge. Topstitch top of vent diagonally as marked, catching underlap.

Step 10 — Stitch front and back section seams and side seams of bodice lining

Stitch front and back section seams and side seams of bodice lining. Stitch seam allowances together, 1 cm (3/8 in) from each seam, to make a casing for the boning. Press seam allowances toward the side. Stitch inside bust pieces together and stitch to front lining piece.

Step 11 — Pin lining and bust pieces right sides together with upper edge of dress

Pin lining and bust pieces right sides together with upper edge of dress. At zip slit, turn lining back, approx. 5 mm (3/16 in) before edges of slit, and pin to upper edge. At dress slit edges, turn allowances to outside and pin to neck edge, over lining. Stitch along neck edge. Trim seam allowances and clip allowances at centre front. At slit edges, turn allowances to inside. Turn lining and bust pieces up and stitch to seam allowances, close to seam, as far as possible. Cut boning for the section seams and side seams, each 5 mm (3/16 in) shorter than the respective casing (measured to marked lower edge), rounding off ends of boning slightly. Slide boning into casings. Stitch horizontally across seam allowances at bottom ends of casings. On inside of dress, turn lining edges under and sew to zip tapes to skirt joining seam.

BurdaStyle

5/2011 Bustier Dress with Draped Detail