

# Layla

By: burdastyle

<http://www.burdastyle.com/projects/layla>

---



Practical and pretty, that is our apron. We spend one fun afternoon shooting Layla in Nora's apartment. It's hard to imagine how much mud soup and other awful things Layla managed to cook during those couple of pictures taken.

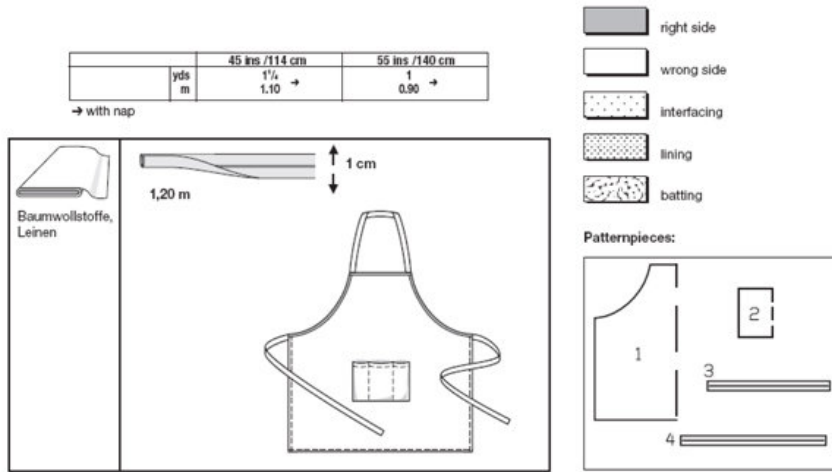
## Materials

Cotton, trim

---

## Step 1

burda Download, instructions apron 8125C



Pattern

- 1 apron piece 1x
- 2 Pocket 1x
- 3 Strap / neck 1x
- 4 tie-strap 2x

Fabrics: Cotton or linen fabric

**Step 2**

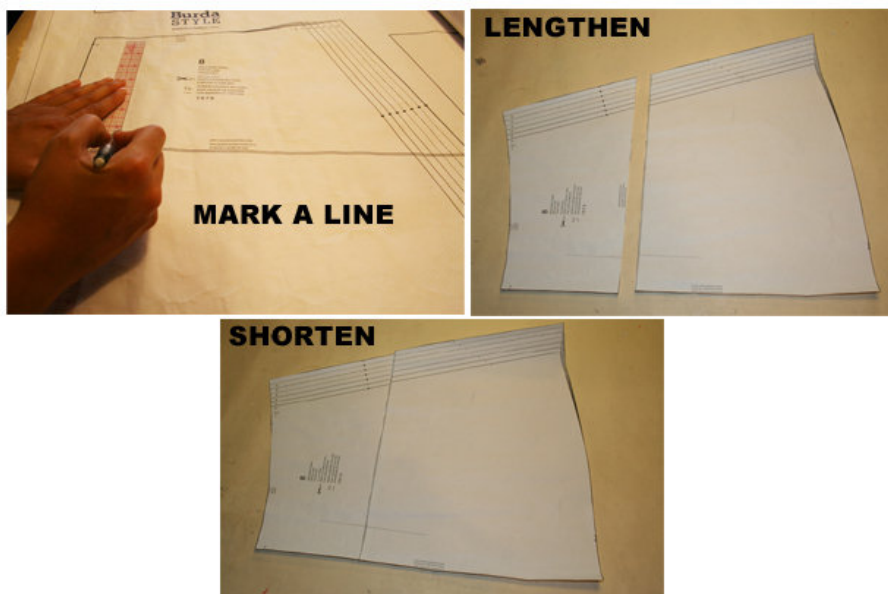


To print the patterns out at home follow the instructions:  
 Paper cut for ANSI A (German DIN A4) prints:

The patterns are printed out on 15 sheets with a thin frame. Wait until all sheets are printed out. Arrange the sheets so that they fit together (see additional page with the overview of the prints). Fold the single sheets on the upper and right edge along the thin frame lines. Begin with the left lower sheet and then tape the frame lines together precisely.

---

### Step 3



#### ADJUST PATTERN SIZES

Select your size according to the Burda-dimension table: dresses, blouses, jackets and coats according to the bust size, trousers and skirts according to the hip width. Change the pattern to fit your measurements if they deviate from the Burda-size chart. Cut out the pattern according to your size.

Refer to our [‘Adjust patterns for mixed sizes’](#) technique

#### LENGTHENING OR SHORTENING THE PATTERN PIECES

Our pattern is calculated for a height of 5â€™ 6â€™ (168 cm). If you are taller or shorter, you can adjust the pattern pieces along the lines marked “lengthen or shorten here”. This way the proper fit is maintained. Always adjust all pattern pieces along the same line to the same degree.

How to lengthen and shorten pattern pieces:

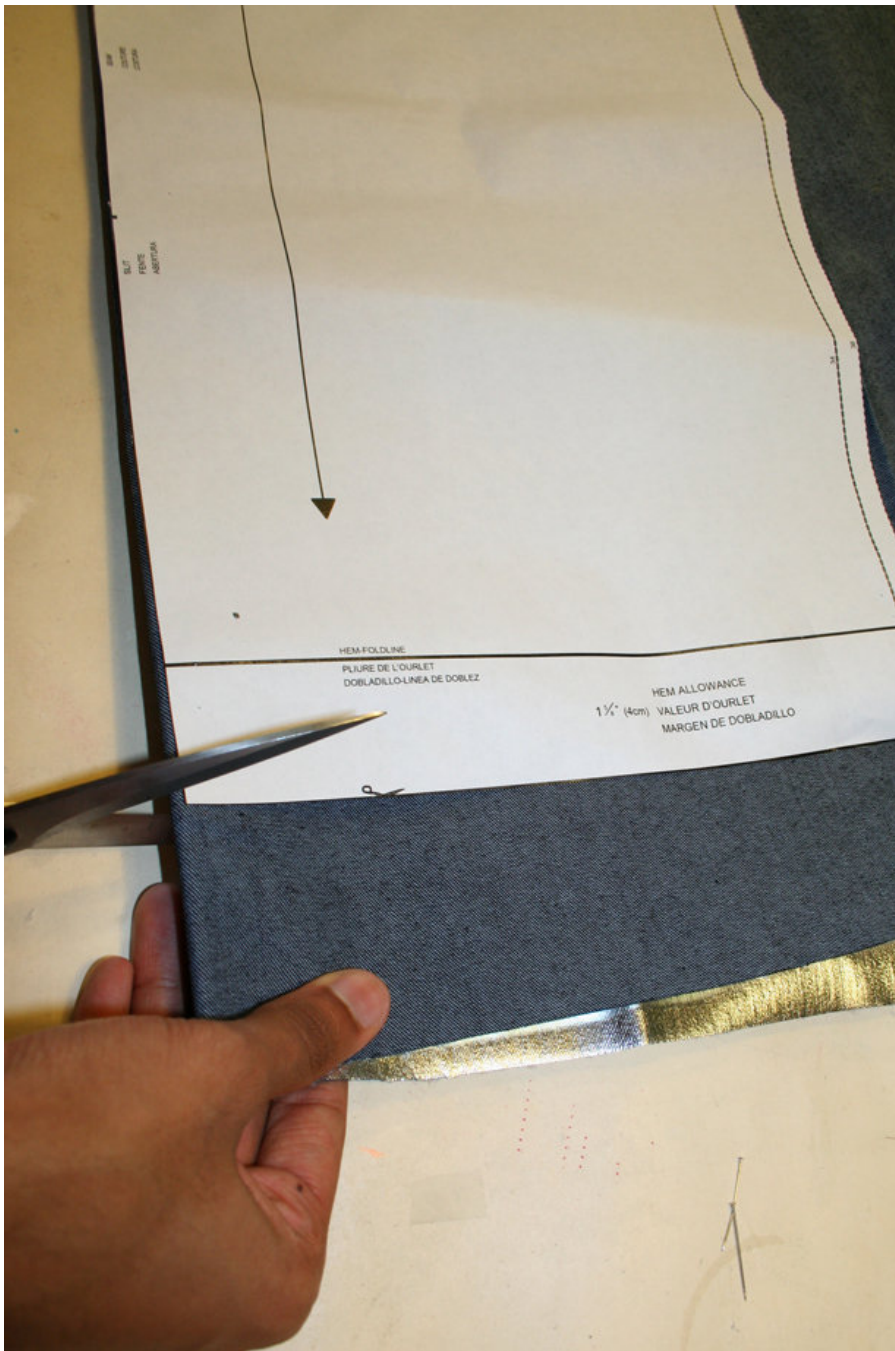
Cut the pattern pieces along the marked lines

To lengthen, slide the two halves of the pattern piece as far apart as necessary.

To shorten, overlap the two halves of the pattern piece as far as necessary. Blend the side edges.

---

### Step 4



## CUTTING OUT

FOLD (â’ â’ â’ â’ ) means: Cut on the fold, the fold being the center of the pattern piece, but never a cut edge or seam. The piece should be cut double, with the fold line forming the center line. Pattern pieces that are outlined with a broken line in the cutting diagrams are to be placed face down on the fabric. The cutting diagrams on the pattern sheet show how the pattern pieces should be placed on the fabric.

The cutting diagrams show the placement of the pattern on the fabric.

For a single layer of fabric, the pattern pieces are pinned to the right side. For double layers of fabric, the right sides are facing and the pattern pieces are pinned to the wrong side. The pattern pieces that are shown extending over the fold of the fabric in the cutting diagram should be cut last from a single layer of fabric .

## Step 5

SEAM AND HEMLINE ALLOWANCES are included on an average:

1 5/8" (4 cm) for hem, 5/8" (1.5 cm) for all edges and stitches. Using BURDA copying paper, transfer the lines and signs of the pattern onto the wrong side of the fabric. Instructions can be found in the packaging.

Sewing

While sewing, the right sides of the fabric are facing.

Transfer all lines of the pattern onto the right side of the fabric using basting stitches.

---

## Step 6

APRON

Border edges

First border the rounded lateral apron edges, then the upper edge using the pre-seamed strap. Fold half of the strap around the edges, baste and stitch narrowly, thereby enclosing the edges. Fold the lateral strap ends towards the inside. (a)

Hem and lateral edges

Press allowances inwards, fold and stitch. (b)

Straps

Press allowances of all edges towards the inside. Fold one half of the strap and press. Stitch edges narrowly on top of each other. Stitch the tie straps between the marked cross lines. Stitch the short strap (for the head) under the upper apron edges. ©

Pocket

Neaten the allowances all around and press towards the inside. Stitch the allowance of the upper edge, around 1/4 inch (0.7 cm) from the edge. Pin the pocket, the fold lines meeting, onto the apron and stitch.

Additionally stitch the pocket lengthwise as marked. (d)

---

**BurdaStyle**

Layla