

Naomi

By: burdastyle

<http://www.burdastyle.com/projects/naomi>



The Design of this Kimono Style jacket was inspired by Kasia26 Design submission. It is a Kimono style jacket that can be worn as a top over pants or as a jacket if in heavier material. We liked the look of it so much that we ended up giving one to Naomi Campbell when we met her at DLD this January. She was equally smitten with it. We hope you enjoy it too; we are looking forward to seeing many variations.

Materials

Silk, Snaps

Step 1

burda Download-Pattern jacket 6015 - Instructions

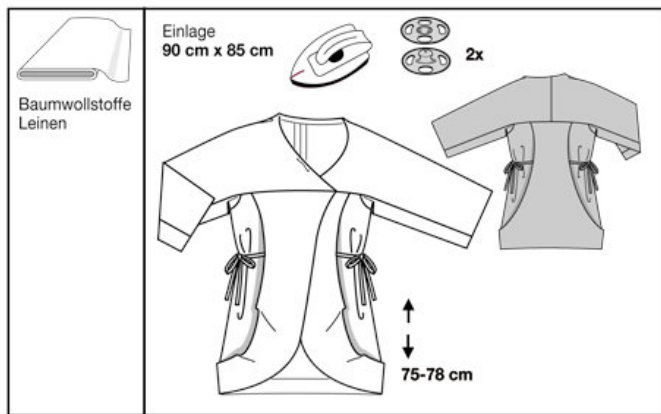


mittel

normal weit

burda sizes		55 ins / 140 cm						
		34	36	38	40	42	44	46
	yds	3	3	3	3 1/2	3 1/2	3 1/2	3 1/2
	m	2.70	2.70	2.70	2.95	2.95	2.95	2.95

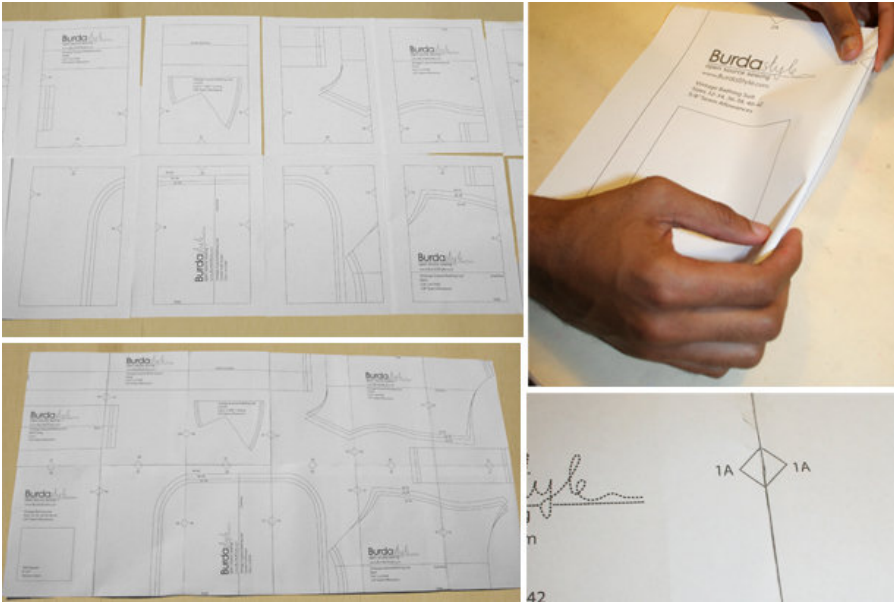
→ with nap



- 1 Right front piece 1x
- 2 Left front piece 1x
- 3 Front facing 2x
- 4 Front side piece 2x
- 5 Back center piece 1x
- 6 Back side piece 2x
- 7 Back facing 2x
- 8 Lower sleeve 2x
- 9 Right sleeve 1x
- 10 Left sleeve 1x
- 11 Right facing (front) 1x
- 12 Left facing (front) 1x
- 13 Bias strips / neckline 1x
- 14 Tie-belt (back) 1x
- 15 Tie-belt (front) 2x

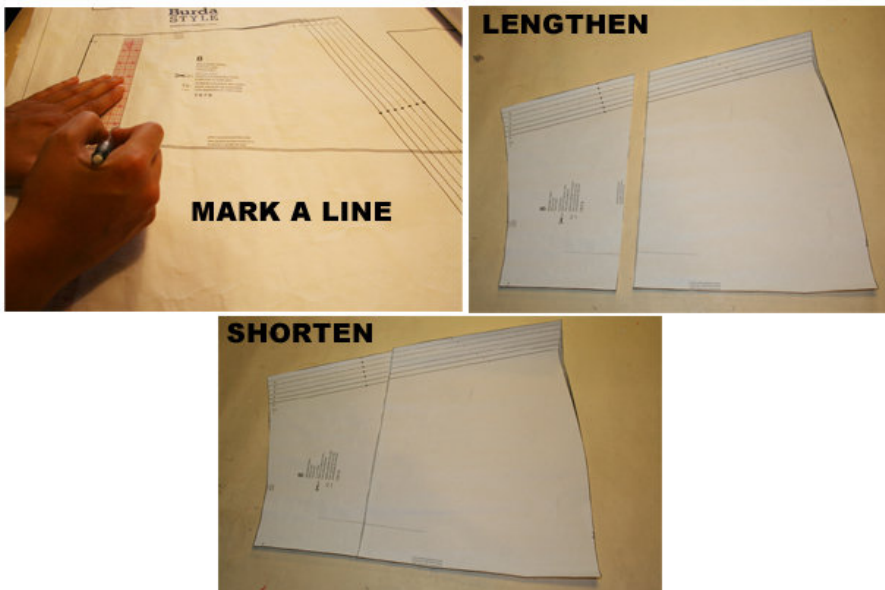
Fabric: Cotton fabric, linen

Step 2



The patterns can be printed out at the copy shop. If you decide to print them at home, follow the instructions: Paper cut for ANSI A (German DIN A4) prints: The patterns are printed out on 63 sheets with a thin frame. Wait, until all sheets are printed out. Arrange the sheets so that they fit together (see extra page with the overview of the prints). Fold the single sheets on the upper and right edge along the thin frame lines. Begin with the left lower sheet and then tape the frame lines together precisely.

Step 3



ADJUST PATTERN SIZES

Select your size according to the Burda-dimension table: Dresses, blouses, jackets and coats according to the bust size, trousers and skirts according to the hip width. If necessary, change the pattern to fit your measurements if they deviate from the Burda-dimension table. Cut out the pattern according to your size.

Refer to our “ Adjust patterns for mixed sizes” technique

LENGTHENING OR SHORTENING THE PATTERN PIECES Our pattern is calculated for a height of 5’ 6” (168 cm). If you are taller or shorter, you can adjust the pattern pieces along the lines marked “lengthen or shorten here”. Thus the proper fit is preserved. Always adjust all pattern pieces along the same line the same degree.

How to lengthen and shorten pattern pieces: Cut the pattern pieces along the marked lines.

To lengthen, slide the two halves of the pattern piece as far apart as necessary.

To shorten, overlap the two halves of the pattern piece as far as necessary. Blend the side edges.

Step 4

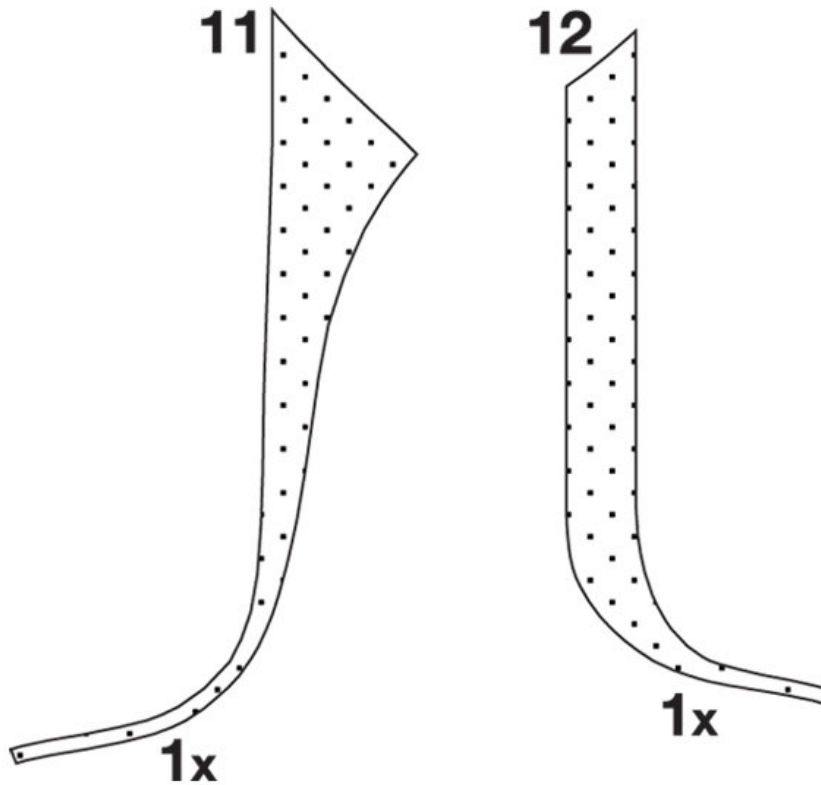


CUTTING OUT FOLD () means: here is the center of a pattern piece but never a cut edge or a seam. The piece should be cut double, with the fold line forming the centre line. Pattern pieces that are outlined with a broken line in the cutting diagrams are to be placed face down on the fabric. The cutting diagrams on the pattern sheet show how the pattern pieces should be placed on the fabric (a).

The cutting diagrams show the placement of the pattern on the fabric For a single layer of fabric, the pattern pieces are pinned to the right side. For double layers of fabric, the right sides are facing and the pattern pieces are pinned to the wrong side. The pattern pieces that are extending over the fold of the fabric shown in the cutting diagram should be cut last from a single layer of fabric (b).

Step 5

INTERFACING



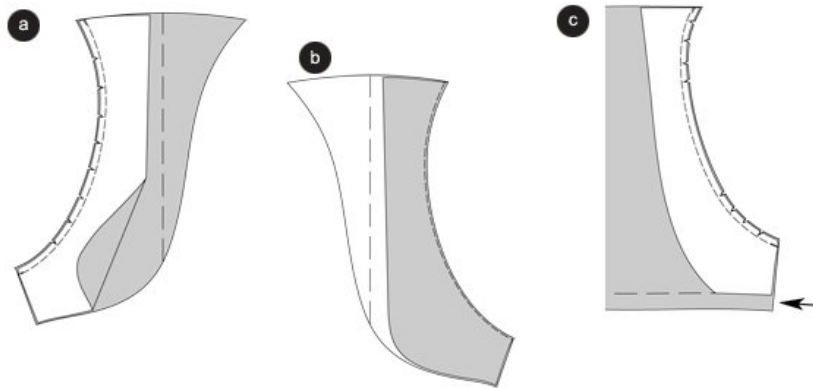
SEAM AND HEMLINE ALLOWANCES are included on an average: $\frac{5}{8}$ " (1.5 cm) for all edges and stitches. Using BURDA copying paper transfer the lines and signs of the pattern onto the wrong fabric side. You will find instructions in the packaging.

Interfacing Cut out the interfacing according to the drawing and press it onto the wrong fabric side.

Sewing

While sewing the right fabric sides are facing. Transfer all lines of the pattern onto the right fabric side using basting stitches

Step 6



Jacket

Front facing

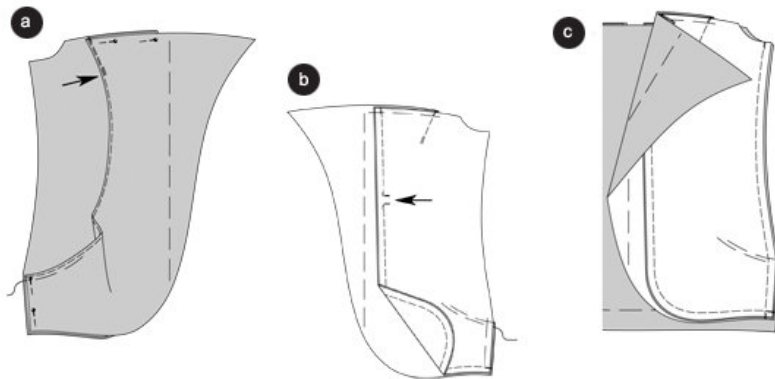
Pin the front facings on the right and left front piece (seam 1), right sides facing, and stitch. Trim allowances, snip (a).

Fold the facings inside and pin, press. Topstitch the edges narrowly (b).

Back facings

Pin the back facings on the back center piece (seam 2), right sides facing, and stitch. The hemline overlaps (arrow). Trim allowances, snip. Fold the facings inside and baste, press. Topstitch the edges narrowly ©.

Step 7



Front princess seams / pocket openings

Position the front center pieces on the front side pieces, the edges meet the marked lines. Pin the front center pieces along the marked lines. Pin the top and side edges together. Topstitch narrowly from the top to the cross line. Secure seam ends (arrow). The drawing shows the right front piece (a).

Pin the inner edges of the front side pieces and the facings together, right sides facing, and stitch. Note an opening for the tie-belt between the cross lines at the right front piece (arrow). Secure seam ends. Trim the allowances, except along the placket. Pin the top and side edges together (b).

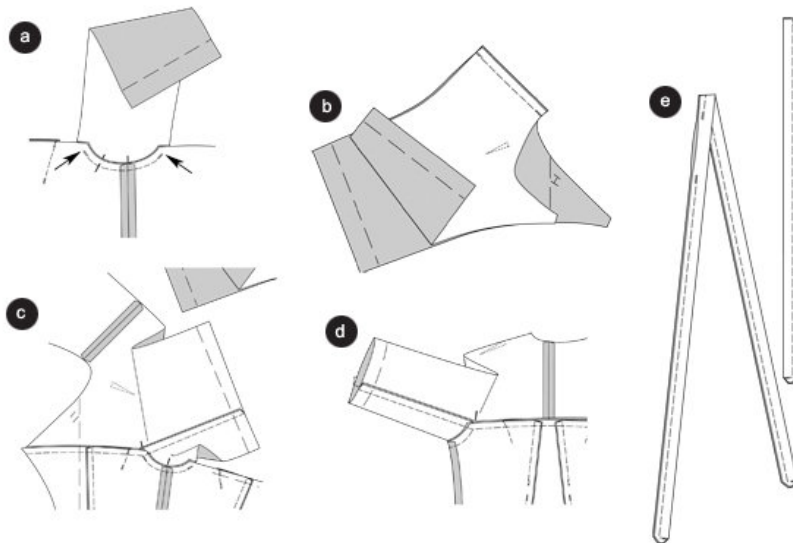
Back pieces

Pin the back center pieces on the back side pieces according to the text and drawing 4, topstitch narrowly from the top down to the cross line. Stitch the inner edges together. Note, leave an opening for the tie-belt between the cross lines. Secure the opening ends. Trim the allowances, except at the opening ends. Pin the top and side edges together.

Side seams

Position the front piece on the back piece, right sides facing, baste the side seams (seam 3), and stitch. Trim allowances and press apart ©.

Step 8



Apply lower sleeve

Position the lower sleeves on the armholes of the side pieces, right sides facing, cross lines 5 meet. The cross lines in the center of the lower sleeves meet the side seams. Baste the sleeves (seam 4) and stitch, beginning and ending at the seam markings (arrows). Secure seam ends. Trim and neaten allowances (a).

Sleeves

Position the left sleeve on the right sleeve, right sides facing. Stitch the back center seam (seam 6). Trim allowances and press apart (b).

Pin the right sleeve, the right front piece and the lower sleeve together, right sides are facing (seam 7), the cross line meets the mark for the seam. Stitch the cross seam. Trim allowances, neaten and press. Snip in the allowances of the armhole. Pin the left sleeve, the left front piece and the lower sleeve together. Trim allowances, neaten and press. Snip in the allowances of the armhole ©.

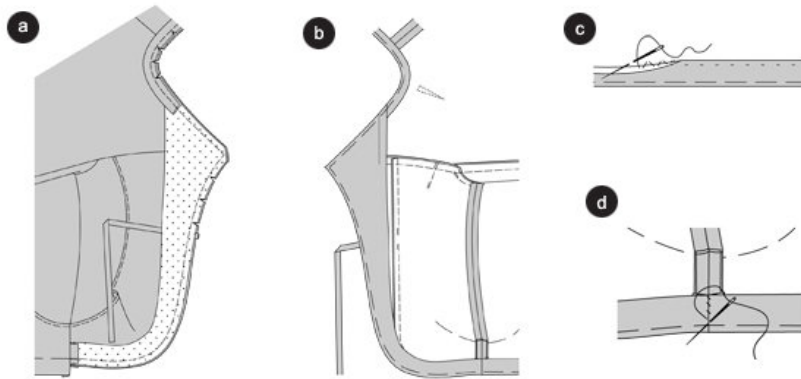
Pin the back sleeve edge, the back piece and the lower sleeve together, right sides are facing (seam 8), the cross lines meet the armhole seams. Stitch the cross seam. Trim allowances, neaten and press. Snip in the allowances of the armhole (d).

Tie-belt (pieces 14 and 15)

Fold the straps lengthwise, right sides facing. Stitch the edges together, $\frac{1}{2}$ " (1.27 cm) wide along the fold line. The straps (piece 15) need an open short side to turn the piece right side out. Leave an opening at the long edge of piece

14 to turn it right side out. Turn the straps right side out. Press the edges. Sew the raw seam of piece 14 by hand. Pin the straps (piece 15) along the raw edges between the cross lines onto the front edges (e).

Step 9



Front edges / neckline

Fold the bias straps lengthwise, wrong sides facing. Press.

12 Pin the facings on the corresponding front pieces, right sides facing. Pin the edges together (seam 9 and 10). Pin the bias strips on the neckline in a way that the raw edges are positioned on the allowances. The top edges are positioned on the top facing edges. Fold the allowances of the side facing edges inside. Topstitch the bias strips and the facings, catching the strips. Trim allowances, snip in at the curves. Cut the corners diagonally and neaten the inner facing edges (a).

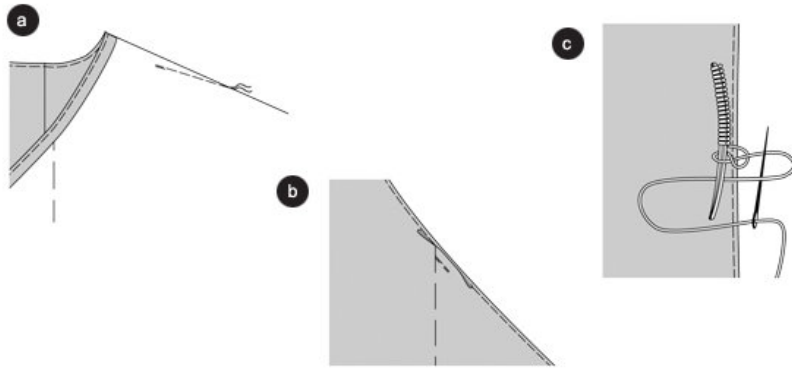
Facings, bias strips and back hemline. Fold the hemline to the inside and baste, press (b).

Hand sew the back hemline and the facings up to the curve ©.

Hand sew the side edges of hemline and facings together. Topstitch the neckline, the front and back edges up to the side seams narrowly (d).

Sleeve cuff Trim the sleeve cuff edge, fold inside and pin, press. Stitch the cuff seam.

Step 10



Darts

Stitch darts at the top of the right and left sleeve according to the drawing. Secure the seam ends through backstitches. Knot the threads. Press the darts (a).

Pleat

Fold the pleat at the right front piece in such a way that right fabric sides are facing, topstitch approximately 1" (2.5 cm) wide. Secure seam ends (b).

Thread loop

Apply a thread loop for the tie-belt at the inside of the right front piece (above the waistline). Pull the separate tie-belt through the opening under the center back piece, the ends overlap in same length. Stitch the strap next to the opening on the allowances of the inner seams. Pull the tie-belt of the left front piece (underlap) through the placket to the outside, pull through the thread loop. Tie the right and left strap with the back strap at the side.

Sew the tops of the snap buttons by hand on the inside of the right front piece and on the outer corner of the left front piece, respectively. Pin the right front piece on the left front piece, the centers meet. Then mark the placement spots for the snap button bases. Sew the base pieces by hand ©.

BurdaStyle

Naomi