

# Drawstring Top 05/2012

By: burda style magazine

<http://www.burdastyle.com/projects/drawstring-top-052012>

---



Drawstring top sewing pattern. This top is quick and easy to sew with drawstring casings for the shoulders to add a gathered effect. The applique on the front is made from lovely broderie anglaise.

## Materials

Cotton poplin, fabric width: 160 cm (63 ins) fabric length: 1.00 1.00 1.05 1.05 1.10 1.10 m (1 1/8 1 1/8 1 1/4 1 1/4 1 1/4 1 1/4 yds) Madeira broderie anglaise/eyelet fabric, approx. 50 × 30 cm (20 × 12 ins).

---

## Step 1 — Preparations



This pattern is printed on 8.5 × 11 sheets of plain paper. Do not scale or center pages before printing. Wait until all sheets are printed out before beginning to tape them together. **Do not cut out pattern pieces yet**— Arrange the sheets on a large, hard, flat surface so that they fit together, matching up like numbers and letters (i.e. 6A to 6A). To tape pattern together, fold under the margin of one piece (6A) and tape right against the line of it's matching number/letter (6A).

Trace the pattern pieces from the pattern sheet following the lines and markings for the correct size and the correct style (109). (This pattern also includes pattern pieces, lines and markings for style 110A+B.)

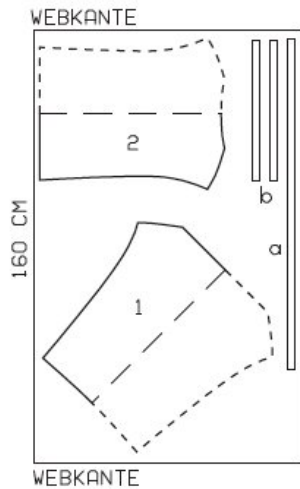
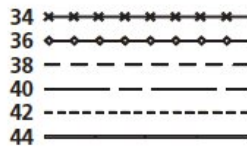
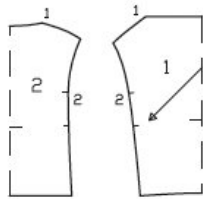
**burda style magazine pattern do not have seam allowance included.**

Seam and hem allowances to be added: Seams and edges add 1.5 cm (5/8 in), shoulder seams add 2 cm (3/4 in), neck edge add 2 cm (3/4 in), hem add 1.5 cm (5/8 in).

---

## Step 2 — Cutting out

Pattern pieces 1 and 2



Fabric width 150 cm. Cut on a single layer of abric.

webkante = selvage

Poplin:

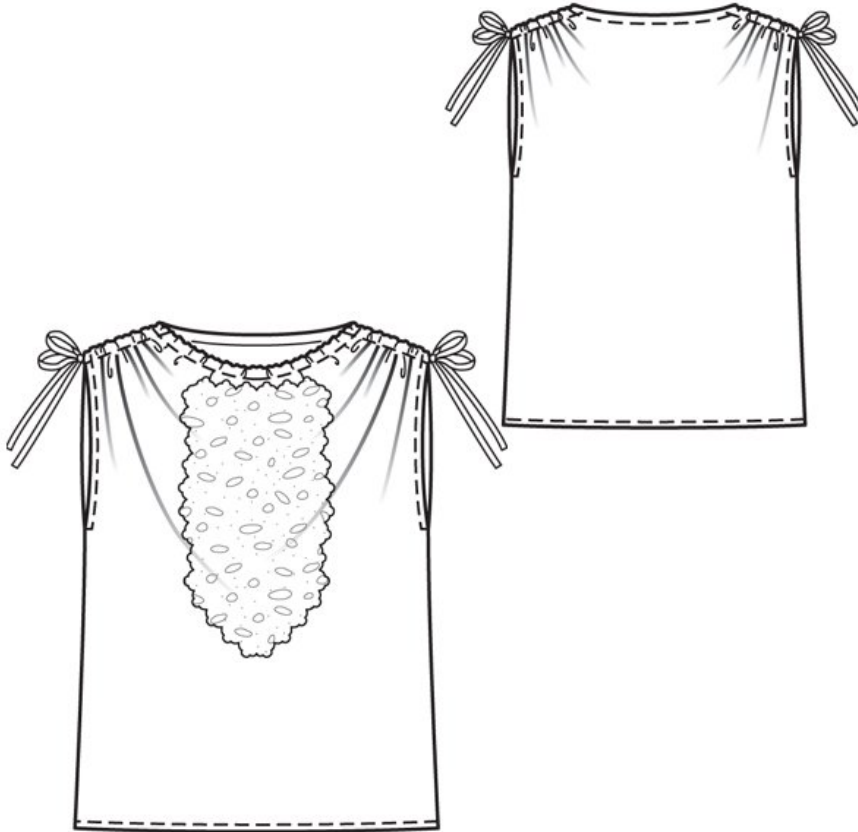
- 1 front, on a fold 1x
- 2 back, on a fold 1x

Also draft and cut the following pieces, not included in the pattern sheet:

- a) drawstring band (front), 120 122 124 125 127 129 cm (47 1/4 48 49 49 1/4 50 50 3/4 ins) long, 3 cm (1 1/4 ins) wide (incl. allowances)
- b) 2 drawstring bands (back), 52 cm (20 1/2 ins) long, 3 cm (1 1/4 ins) wide (incl. allowances)

Also cut a piece of broderie anglaise in the desired size and shape.

### Step 3 — Sewing



On front and back armhole edges, press allowances to inside, turn half under, and baste at seam marks, taper stitching toward edge of seam allowance. Topstitch 7 mm (1/4 in) from armhole edges.

Stitch shoulder seams right sides together, beginning or ending stitching exactly at marked neck edge. At shoulder seams and on neck edge, press edges of seam allowances to inside, 7 mm (1/4 in) wide. Press shoulder seams open and press seam allowance on front neck edge to wrong side, making small folds at corners between shoulder and neck edge. Topstitch front 1.2 cm (1/2 in) from shoulder seams and from neck edge. On back, topstitch 1.2 cm (1/2 in) from shoulder seams only.

Fold drawstring bands lengthwise, right side facing in. Stitch 7 mm (1/4 in) from fold edge. Turn drawstrings right side out and press.

Pull short drawstring bands into back shoulder casings. Stitch across ends of bands, even with corner of neck edge. Press seam allowance on back neck edge to inside and baste. Topstitch 1.2 cm (1/2 in) from back neck edge. Pull long drawstring band into front casing.

Turn hem allowance to inside, turn half under, press, and stitch.

Pin piece of broderie anglaise to front, below casing. Try on garment to determine the exact size of the piece. Cut edges of fabric piece, following embroidery pattern and angling lower end down toward centre. Sew broderie anglaise piece in place by hand.

---

**BurdaStyle**

Drawstring Top 05/2012