

# One Button Blazer 06/2012

By: burda style magazine

<http://www.burdastyle.com/projects/one-button-blazer-062012>

---



This classic blazer is casual and business appropriate, and is the perfect addition to any outfit. It has a low front drop neckline and is done up with one centre front button. This one is made in a deep beige for a western-look, but you could make it in classic black or a print for a statement blazer.

---

## Step 1 — Preparations



This pattern is printed on 8.5 × 11 sheets of plain paper. Do not scale or center pages before printing. Wait until all sheets are printed out before beginning to tape them together. **Do not cut out pattern pieces yet**— Arrange the sheets on a large, hard, flat surface so that they fit together, matching up like numbers and letters (i.e. 6A to 6A). To tape pattern together, fold under the margin of one piece (6A) and tape right against the line of it's matching number/letter (6A).

Trace the pattern pieces from the pattern sheet following the lines and markings for the correct size and the correct style (106). (This pattern also includes pattern pieces, lines and markings for style 107 that should be ignored.)

Trace pieces 1, 2, and 3 from the pattern sheet a second time, up to the lining line.

The welt joining lines marked on piece 1 are for size 36 only. For sizes 38-44, lay paper pattern pieces 1 and 3 together and lengthen the pocket lines of the side piece toward the front finished length = 14.5 cm (5 3/4 ins).

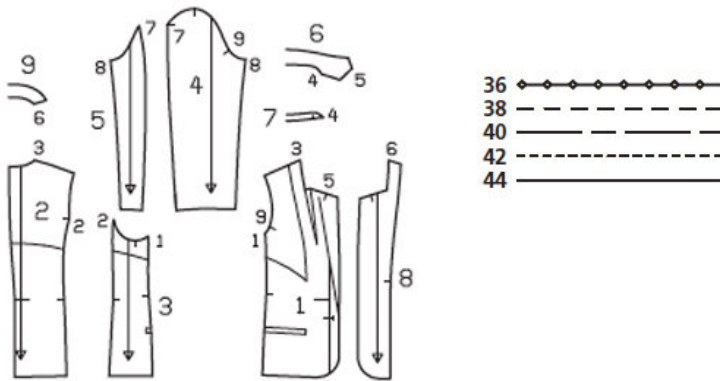
**burda style magazine pattern do not have seam allowance included.**

Seam and hem allowances to be added: Seams and edges 1.5 cm (5/8 in), hem and sleeve hems 4 cm (15/8 ins), lining 1.5 cm (5/8 in).

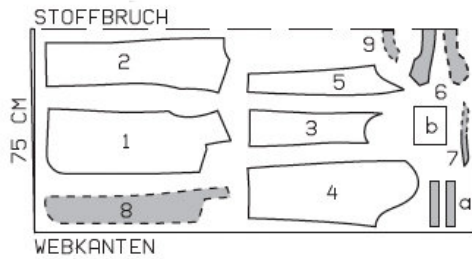
---

## Step 2 — Cutting Out

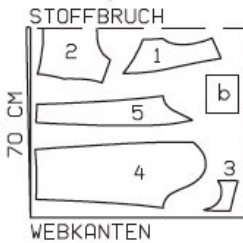
Pattern Pieces 1-9



Lay pattern pieces according to diagrams below, on two layers of fabric  
Main fabric, fabric width: 150 cm



Lining, fabric width: 140 cm



Stoffbruch = fabric fold  
Webkanten = selvage

Canvas:

- 1 front 2x
- 2 back 2x
- 3 side piece 2x
- 4 sleeve front 2x
- 5 sleeve back 2x
- 6 collar, on a fold 2x
- 7 collar stand, on a fold 2x
- 8 front facing 2x
- 9 back facing, on a fold 1x

Draft the following pattern pieces not included in the pattern:

- a) 4 welt strips, 17 cm (63/4 ins) long, 4 cm (15/8 ins) wide (incl. allowances),
- b) 2 pocket pieces, 17 cm (63/4 ins) wide, 15 cm (6 ins) long (incl. allowances).

### Lining:

1 front 2x  
– to lining line  
3 side piece 2x  
– to lining line  
2 back 1x  
– to lining line  
– centre back on fold  
4 sleeve front 2x  
5 sleeve back 2x  
b pocket piece 2x

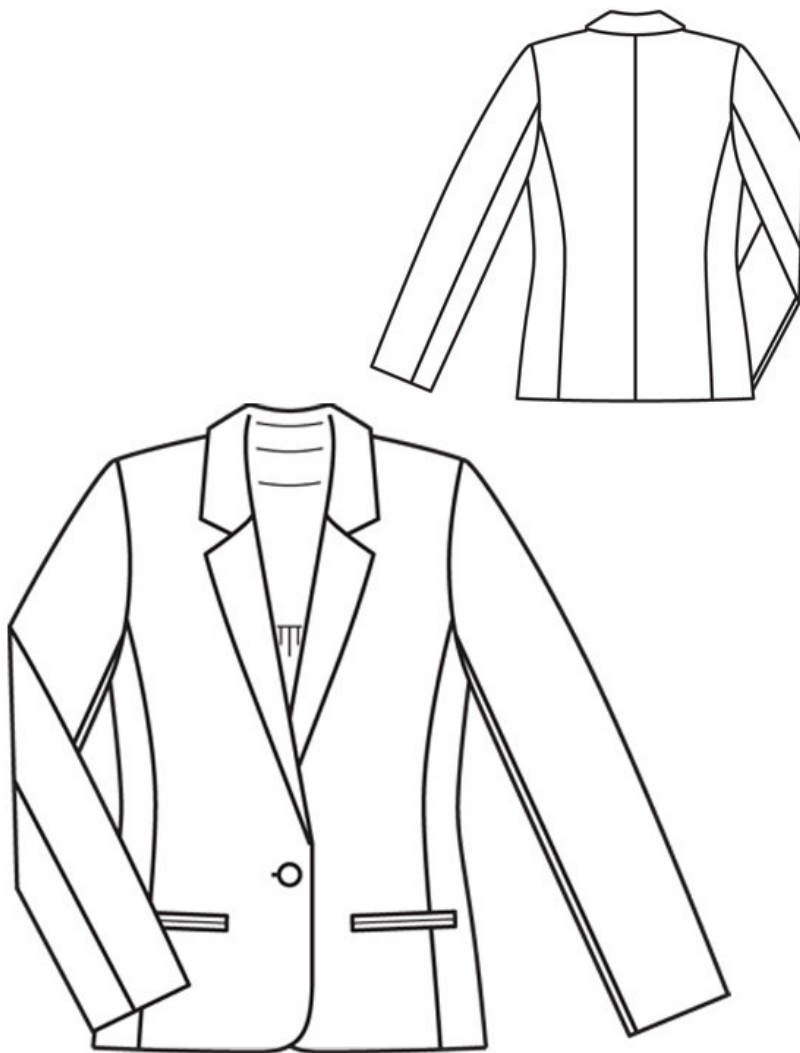
### Interfacing:

Fuse interfacing to wrong side of fabric for pieces 6 – 9 and a

Also interface hem allowances. Iron strips of interfacing, approx. 4 cm (15/8 ins) wide, to wrong side of fabric, over pocket markings. Iron Vilene Bias Tape/stay tape to wrong sides of armhole edges and front shoulder seam edges.

---

## Step 3 — Sewing



#### Binding the seam edges:

Cut pre-folded bias tape apart along the centre. It will then be 1 cm (3/8 in) wide when folded lengthwise in half. Unfold bias tape, pin to seam allowance edge, and stitch 5 mm (3/16 in) from edge. Then fold bias tape over edge and pin, without turning in. Work from outer side of garment to topstitch binding close to joining seam.

Stitch side pieces to front pieces along seam line right sides together. Press seam allowances open. Bind seam edges.

#### Construct welt pockets on fronts:

To mark abutting lines for welts on right fabric side, hand baste 7 mm (1/4 in) from each welt joining line (= finished width of welt). Fold welt strips lengthwise, right side facing out. Press.

Lay folded welt strips on fronts and pin in place so that fold edge of each welt meets abutting line.

Stitch each welt in place, along joining line, 7 mm (1/4 in) from fold edge. Slash between lines of stitching and clip diagonally toward seam ends, not cutting into welts. Turn welts into pocket openings and press. Fold small triangles at pocket opening ends to inside and stitch to welts, from seam end to seam end. Stitch pocket lining pieces to allowances of lower welt joining seams and stitch pocket pieces of main fabric to seam

allowances of upper welt joining seams. Trim pocket pieces even and stitch together.

Stitch centre back seam, right sides together. Stitch side pieces to centre back pieces, right sides together. Press seam allowances open. Bind seam edges.

Stitch shoulder seams of jacket, right sides together.

Bind edge of hem allowance.

Bind inside edges of front facings with bias tape, from lower edges to approx. 5 cm (2 ins) above marking. Stitch shoulder seams of back and front facings together, right sides together.

Lay facing right sides together with jacket and pin in place, matching up the front edges. Build a little extra fullness into corners of lapels. Stitch facing to jacket at hem edges, up front edges, and edges of lapels, stop stitching at marking. Leave facing lying right sides together with jacket for now.

Make a 5cm (2 ins) long cut along the centre dart line, going towards dart tip (lapel darts). Do this for each jacket front.

Stitch collar stand pieces to collar pieces, from centre back to mark number 4. Trim seam allowances and press open. Topstitch close to either side of seam. Stitch collar pieces together along outer edges, from seam number 5, building a little extra fullness into top collar. Turn collar right side out. Sandwich collar between jacket and facing. Stitch undercollar piece to neck edges of fronts, from each seam mark to dart. Press seam allowances open. Stitch long edge of undercollar to neck edge, from centre back toward each side, then stitch lapel darts. Press allowances of collar joining seams open and press darts flat. Stitch narrow edges of top collar to facing, from corner to corner. Clip seam allowances of facing into corners. Stitch long edge of top collar in place. Press seam allowances open. Turn facing to inside. Press hem allowance to inside and sew in place. Sew facing to hem. Pin collar joining seams together exactly. Turn back facing up and stitch seam allowances together, close to collar joining seam. Turn facing down again. Press front edges and edges of lapels.

Stitch front sleeve to back sleeve right sides together, so that the sleeve is closed. Press sleeve hem allowances to inside and sew in place by hand.

Set in sleeves, matching up top arm with jacket shoulder line and underarm points.

Stitch seams of lining. Set in sleeve linings. Turn edges of sleeve hem allowances under, turn raw edge under, and stitch in place.

Stitch lining to inside facing edge, above marking. Lay lining inside jacket, with wrong sides facing, pulling linings into sleeves. Pin a fold, approx. 1 cm (3/8 in) deep, in lining, above sleeve hems.

Sew edge of sleeve lining to hem allowance of sleeve. Remove pins and press extra length of lining down. Sew lower lining edges to seams.

Work buttonhole in right front and corresponding button.

---

**BurdaStyle**

One Button Blazer 06/2012