

# 12/2011 Long sleeved plus size dress

By: burda style magazine

<http://www.burdastyle.com/projects/122011-long-sleeved-plus-size>

---



Long sleeved dress burda style magazine patterns FAQ

## Materials

Silk taffeta

---

## Step 1 — Preparation



Paper cut for ANSI A (German DIN A4) prints:

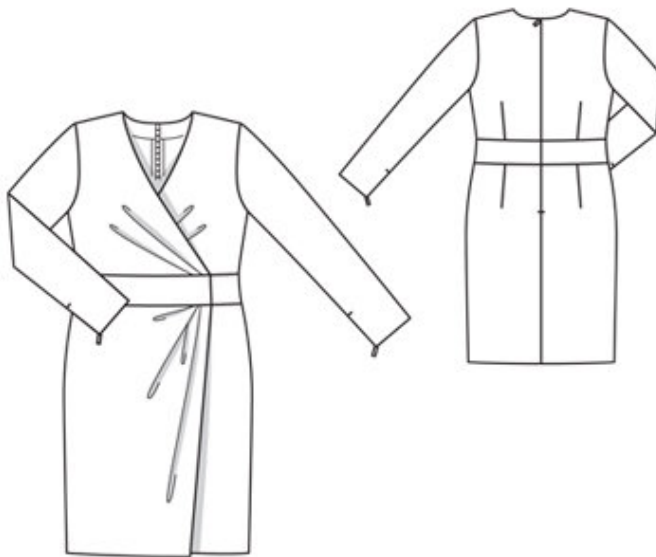
This pattern is printed on 8.5 × 11 sheets of plain paper. Do not scale or center pages before printing. Wait until all sheets are printed out before beginning to tape them together. **Do not cut out pattern pieces yet**— Arrange the sheets on a large, hard, flat surface so that they fit together, matching up like numbers and letters (i.e. 6A to 6A). To tape pattern together, fold under the margin of one piece (6A) and tape right against the line of it's matching number/letter (6A).

**burda style magazine pattern do not have seam allowance included.**

Seam and hem allowances to be added: Seams and edges 1.5 cm (5/8 in).

---

## Step 2 — Cutting out



Taffeta/satin:

â—'1 front 2x

â—'2 back 2x

â—'3 sleeve 2x

â—'4 front neck facing 2x

â—'5 back neck facing 2x

â—'6 front waistband piece 4x

â—'7 back waistband piece 4x

â—'8 left front skirt panel 1x

â—'9 right front skirt panel 1x

10 back skirt panel 2x

View B only:

Sequin fabric:

â—'6 front waistband piece 2x

â—'7 back waistband piece 2x

Interfacing (A, B) See pattern layout. Interface outer waistband pieces.

### Step 3 — Pleats

Lay pleats in fronts in direction of arrows and baste. Stitch darts in back pieces and press toward centre back. Stitch shoulder seams on bodice and on neck facings. Press seam allowances open.

## Step 4 — Neck facings

Pin neck facings right sides together with neck edge of front and back pieces. Stitch along neck edge. Trim seam allowances. Turn facings up and stitch to seam allowances, close to seam. Turn facings to inside and baste to lower front edge. Sew inside facing edges to shoulder seams.

---

## Step 5 — Side seams

Stitch side seams of bodice. Press seam allowances open.

---

## Step 6 — Pleats

Lay pleats in right front skirt piece in direction of arrows and baste. Fold another pleat over centre pleat and baste pleat fold to abutting line. Baste pleat. Press self-facing to inside and baste to upper edge. Stitch darts in left front skirt panel and in back skirt panels. Press darts toward centre front/back. Stitch side seams of skirt. Trim allowance on curved side edges of left front skirt panel to 7 mm (1/4 in) wide, press to inside, and stitch.

---

## Step 7 — Waistband

—Stitch side seams on waistband pieces. Press seam allowances open. Baste outer waistband unit right sides together with lower front and back edges. Turn waistband pieces down. Baste zip opening and centre back skirt seam closed. Try on dress bodice. Pin front waistband pieces together, matching centre fronts. Check the drape of the pleat folds and correct if necessary. Remove pin and undo basting at zip opening. Turn waistband piece up again. Press seam allowance on lower edge of inner waistband to inside. Work from inside to pin inner waistband unit to lower front and back edges, with right side facing wrong side. Stitch front and upper waistband edges together, catching bodice in seam. Trim seam allowances and pleat folds. Turn waistband right side out. Press.

---

## Step 8 — Waistband

Baste outer waistband unit right sides together with upper edge of skirt. Try on dress and correct the drape of the pleat folds if necessary. Undo basting at centre seam of skirt. Stitch outer waistband unit in place. Press seam allowances onto waistband pieces. Sew inside edges of waistband to joining seams, by hand.

---

## Step 9 — Zip

On back pieces, turn neck facing up again. Sew invisible zip to back opening edges. Stitch centre back seam from lower edge to zip. Lay facing down again, turn edges under, and sew to zip tapes.

---

## Step 10 — Sleeves

Insert invisible zips to slit edges of sleeves, from hem line to slit mark. Stitch sleeve seams from upper edge to slit mark. Press sleeve hem allowances to inside and sew in place by hand.

---

## **Step 11 — Sleeve caps**

Set in sleeves, easing sleeve caps.

---

## **Step 12 — Hem**

At hem edge, unfold right front facing. Press hem allowance to inside and sew in place by hand. Turn facing to inside again and sew to hem allowance.

---

## **Step 13 — Waistband**

Lay right front on left front, with wrong side facing right side and matching centre fronts. Lay waistband unit together. Sew ends of waistband in place by hand. On inside, lay straight side edge of left skirt front on right side seam, between markings. Stitch to seam allowance of skirt back, close to seam.

---

**BurdaStyle**

12/2011 Long sleeved plus size dress