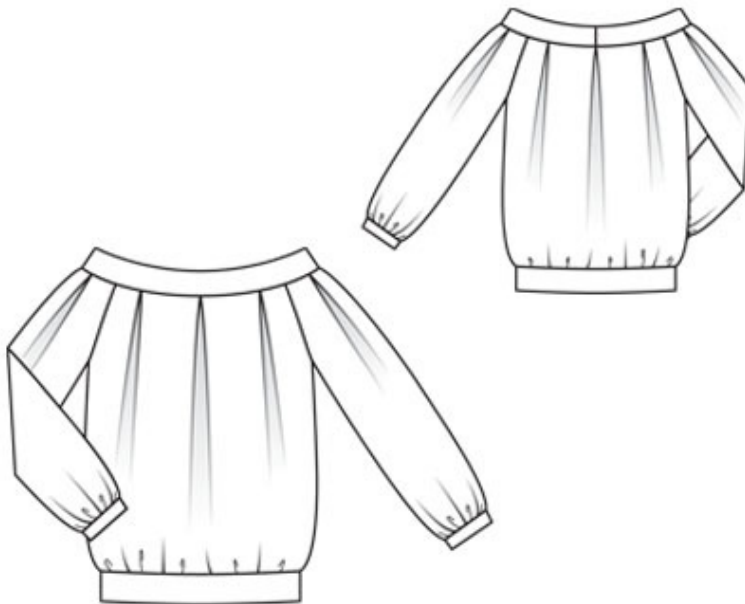


07/2010 Low shoulder blouse

By: burda style magazine

<http://www.burdastyle.com/projects/072010-low-shoulder-blouse>



Low shoulder blouse burda style magazine patterns FAQ

Materials

chintz

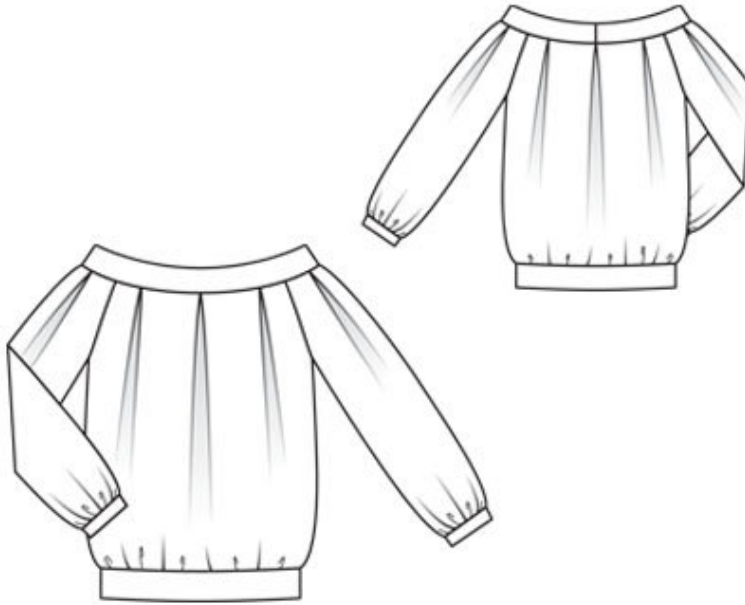
Step 1 — Preparation

Trace pattern pieces from pattern sheet.

Seam and hem allowances:

Seams and edges 1.5 cm (5/8 in).

Step 2 — Cutting out



21front, on a fold 1x

22back, on a fold 1x

23sleeve 2x

24neck band, on a fold 2x

a) 2 sleeve bands, 24 â— 24.5 â— 25 â— 25.5 â— 26 cm (91/2 â— 93/4 â— 10 â— 101/8 â— 101/4 ins) long, 4 cm (11/2 ins) wide, finish^Â-ed width 2 cm (3/4 in),

b) hem band, 108 â— 112 â— 118 â— 124 â— 130 cm (421/2 â— 441/4 â— 461/2 â— 49 â— 511/4 ins) long, 12 cm (43/4 ins) wide, finish^Â-ed width 6 cm (23/8 ins).

Interfacing: See pattern layout.

Step 3 — Side seams

Stitch side seams, but do not stitch across pocket openings.

Step 4 — Sleeve seams

Stitch sleeve seams. Gather lower edges of sleeves to fit sleeve bands.

Step 5 — Sleeves

Joins ends of each sleeve band to a ring. Stitch sleeve bands to lower edges of sleeves. Press seam allowances of joining seams and of other long edges of sleeve bands onto sleeve bands. Fold sleeve bands half to inside and baste to joining seams. Topstitch sleeve bands close to joining seams.

Step 6 — Arms

Stitch sleeves to armhole edges. Press allowances toward sleeves.

Step 7 — Pleats and neck

Fold pleats in arrow direction and baste. Stitch centre back seam of neck band. Stitch outer neck band to neck edge of dress. Press seam allowances onto band. Lay inside band right sides together with attached band and stitch along neck edge. Turn band right side out. Turn in inside edge of band and baste to joining seam. Topstitch band close to joining seam.

Step 8 — Waistband

Gather lower edge of blouse to 108 — 112 — 118 — 124 — 130 cm (42½ — 44¼ — 46½ — 49 — 51¼ ins). Stitch band to lower edge of blouse, matching seam of band to one side —seam. Press seam allowances onto band. Turn in inside edge of waistband and baste in place. Working from the outer side, topstitch close to joining seam.

BurdaStyle

07/2010 Low shoulder blouse