

Peplum Blouse 04/2012

By: burda style magazine

<http://www.burdastyle.com/projects/peplum-blouse-042012>



Peplum blouse sewing pattern. This blouse has a true romantic feeling to it with a long peplum back with ruffles. Lengthen it slightly and wear it as a dress!

Materials

Cotton poplin, width: 150 cm (59 ins) length: 1.95 2.00 2.00 2.05 2.05 m (2 1/4 yds). Vilene/Pellon G 785. 12 small flat buttons.

Step 1 — Preparations



Paper cut for ANSI A (German DIN A4) prints:

This pattern is printed on 8.5 × 11 sheets of plain paper. Do not scale or center pages before printing. Wait until all sheets are printed out before beginning to tape them together. **Do not cut out pattern pieces yet**— Arrange the sheets on a large, hard, flat surface so that they fit together, matching up like numbers and letters (i.e. 6A to 6A). To tape pattern together, fold under the margin of one piece (6A) and tape right against the line of it's matching number/letter (6A).

Trace the pattern pieces from the pattern sheet following the lines and markings for the correct size.
Trace the pattern pieces from the pattern sheet. Follow lines and details for style 117 (this pattern also includes lines and pieces for style 116).

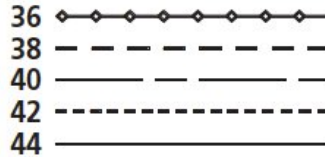
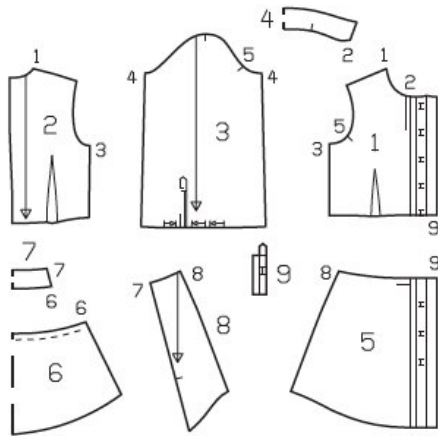
The buttonholes on piece 1 are marked for size 36. For sizes 38 to 44, mark the top buttonhole the same distance from neck edge as for size 36. Mark the bottom buttonhole the same distance from hem edge as for size 36. Space the other buttonholes evenly in between.

burda style magazine pattern do not have seam allowance included.

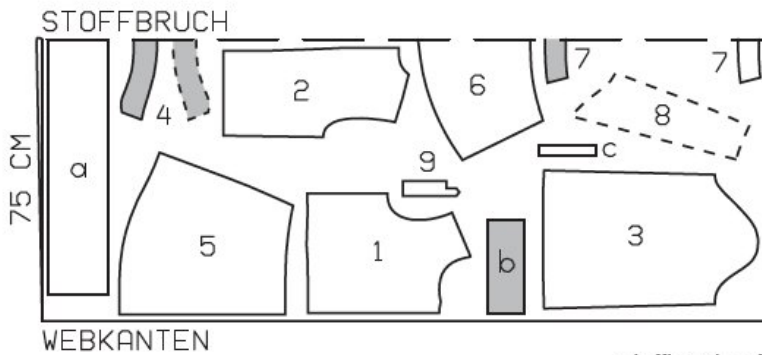
Seam and hem allowances to be added: Seams, edges and hem 1.5 cm (5/8 in), no allowance at long edge of front self-facing.

Step 2 — Cutting out

Pattern pieces 1 to 9



Cut on a double layer of fabric, right sides in.
Fabric width 150 cm



stoffbruch = fabric fold
webkanten = selvage

- 1 upper front 2x
- 2 upper back 2x
- 3 sleeve 2x
- 4 collar, on a fold 2x
- 5 lower front 2x
- 6 lower back, on a fold 1x
- 7 middle back piece, on a fold 2x
- 8 side lower back 2x
- 9 sleeve vent band 2x

- a) back flounce, 136 138 140 142 144 cm (53 1/2 54 1/2 55 1/4 56 56 3/4 ins) wide, 16 cm (6 3/8 ins) long,
- b) 2 cuffs, with 2 cm (3/4 in) underlap, 25 25.5 26 26.5 27 cm (9 7/8 10 10 1/4 10 1/2 10 3/4 ins) long, 10 cm (4 ins) wide, finished width 5 cm (2 ins),
- c) 2 binding strips for sleeve vents, 15 cm (6 ins) long, 3 cm (1 1/4 ins) wide (incl. allowances).

Interfacing: Cut and iron interfacing on to the wrong side of the collar piece and the button placket.

Step 3 — Sewing



Sew the centre back seam as a flat-felled seam, Stitch the seam with the pieces laying right sides together. Press seam allowances onto one side. Trim the bottom seam allowance to a width of 5 mm (3/16 in). Fold under the edge of the seam allowance which lies on top and baste in place. Stitch from outer side, 7 mm (1/4 in) from seam. Remove the baste stitching.

Stitch the front and back darts and press darts toward centre. Stitch the upper front pieces to the lower front pieces. Trim seam allowances to 7 mm (1/4 in) wide, neaten edges together, and press allowances up.

Gather the upper edge of the lower back to 23, 24, 25, 26, 27 cm (9 1/8, 9 1/2, 9 7/8, 10 1/4, 10 3/4 ins) (depending on the size you are making). Pin the interfaced middle back piece to the upper edge of the lower back, right sides facing. Pin the middle back piece with no interfacing to the upper edge of the lower back, with right side facing wrong side. Stitch middle back pieces in place together and press up. Baste the open edges together.

On the lower flounce edge, turn allowance to inside, turn edge under, and stitch 7 mm (1/4 in) from lower edge. Gather the upper flounce edge and stitch to lower edge of lower back. Press seam allowances up. Topstitch the lower back close to the flounce joining seam.

Beginning at seam number 7, stitch the side lower back piece to middle back piece, lower back, and hem flounce. The hem allowances of the side lower back pieces extend past the lower flounce edge. Press the seam allowances onto the side pieces. Sew the seams as flat-felled seams.

Stitch the upper back to the side lower back pieces and middle back piece. Press seam allowances up.

Stitch side seams and shoulder seams as flat-felled seams. Press seam allowances onto back.

On fronts and on side back pieces, turn hem allowances to inside, turn raw edges under, and stitch 7 mm (1/4 in) from lower edge.

Fold the front self-facings to the inside on the fold line and press. Work the buttonholes in the right self-facing. Turn the folded facings to outside and stitch to neck edge, from front edge (fold) to centre front. Trim seam allowances and clip allowances at centre front, close to seam. Turn the facings to the inside and press the edges. Topstitch the front edges as marked.

Stitch the collar pieces right sides together along the outer edges, beginning and ending exactly on the seam line of the joining edge. Turn collar right side out and press. Stitch the under collar to the neck edge. Press the seam allowances onto the collar. Turn edge of top collar under and baste over joining seam. Work from right side of garment to stitch along line of seam. Topstitch 7 mm (1/4 in) from collar edges.

Sew sleeve vents on right and left sleeves, as mirror images: On sleeve band, press allowances to wrong side, except for allowances on long joining edge and on lower edge, clipping allowance diagonally into corner. Press band on the fold line, wrong side facing, then unfold it again. Slash the sleeves as marked. Pin binding strip right sides together with the back vent edge and stitch 7 mm (1/4 in) from edge, ending stitching 7 mm (1/4 in) above end of vent. Clip the sleeves diagonally from end of vent to end of seam. Fold the binding strip over the cut edge to the inside, turn edge under, and pin to the joining seam. Work from outer side of blouse to stitch binding close to edge. Stitch the outer half of the band to the sleeve, along joining line, right sides facing. From end of vent, clip sleeve approx. 1 cm (3/8 in) diagonally up, to band joining seam. Fold small triangle at end of opening up onto right side of sleeve and lay top end of binding on right side of sleeve. Lay the band over the vent and pin upper end in place. Fold inside half of band to inside, on fold line, and baste to the joining seam. Topstitch the band close to the joining seam. Edgestitch the upper band end in place and stitch across band as marked. Work buttonhole in each band.

Fold the pleats in the lower sleeve edges in direction of arrows and baste. Stitch sleeve seams.

Stitch each cuff to lower edge of sleeve. Press allowances of joining seam and of other long edge of cuff onto cuff. Fold the cuffs lengthwise, with right side facing in, and stitch across the ends. Turn right side out. Baste the inside edges in place. Topstitch the cuffs close to all edges. Work a buttonhole in front end of each cuff.

Set in the sleeves. Press the seam allowances away from sleeves. Topstitch blouse fronts and back along sleeve attachment seams.

BurdaStyle

Peplum Blouse 04/2012