

09/2011 Cape

By: burda style magazine

<http://www.burdastyle.com/projects/092011-cape>



Cape http://www.burdastyle.com/faq/patterns#faq50">burda style magazine patterns FAQ

Materials

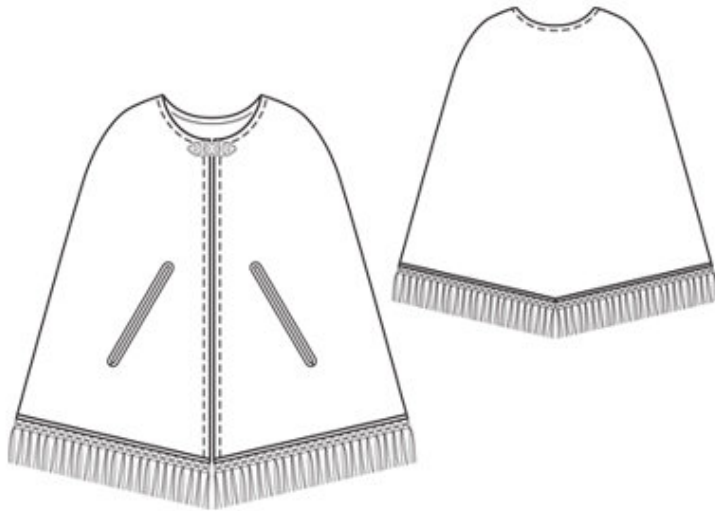
loden cloth

Step 1 — Preparation



Paper cut for ANSI A (German DIN A4) prints:â€œâ€œThis pattern is printed on 8.5 × 11 sheets of plain paper. Do not scale or center pages before printing. Wait until all sheets are printed out before beginning to tape them together. **Do not cut out pattern pieces yet**— Arrange the sheets on a large, hard, flat surface so that they fit together, matching up like numbers and letters (i.e. 6A to 6A). To tape pattern together, fold under the margin of one piece (6A) and tape right against the line of it’s matching number/letter (6A).
â€œâ€œ**burda style magazine pattern do not have seam allowance included.**â€œâ€œSeam and hem allowances to be added: Seams and edges 1.5 cm (5/8 in). â€œâ€œsee example here: [HYPERLINK “http://www.burdastyle.com/projects/072011-jumpsuit/instructions/1” \t “_blank”](http://www.burdastyle.com/projects/072011-jumpsuit/instructions/1” \t “_blank”)
<http://www.burdastyle.com/projects/072011-jumpsuit/instructions/1>

Step 2 — Cutting out



1 x front (1),
1 x back (2),
1 binding strip (a), 15 cm (6 ins) long and 2.5 cm (1 in) wide = incl. seam allowances

Step 3 — Slit

Draw seam allowances, 1.5 cm (5/8 in) wide along the edges of the paper pattern pieces — only the lower edge (hem) needs no seam allowance. Cut out the fabric pieces. Draw the hand slit with tailor's chalk. Pin front pieces together and remove the paper pattern piece. Turn the pinned-together front pieces over. Lay the paper pattern on the second front piece and pin it in place. Draw the hand slit. Remove the paper pattern piece.

Step 4 — Bias tape

Iron Vilene Bias Tape/ stay tape to wrong side of neck edges and front edges so that the line of chain stitch on the tape lies 1.5 cm (5/8 in) from the fabric edge (= seam allowance width).

Step 5 — Slits

Cut out each hand slit. Lay folded binding strip over edges of hand slit, with the 7 mm (1/4 in) wide side (see step 3) on the right side of the fabric. Baste the binding in place, then edgestitch in place (a). On the wrong side of the fabric, trim the binding strip close to the stitching (b).

Step 6 — Slits

Cut out each hand slit. Lay folded binding strip over edges of hand slit, with the 7 mm (1/4 in) wide side (see step 3) on the right side of the fabric. Baste the binding in place, then edgestitch in place (a). On the wrong side of the fabric, trim the binding strip close to the stitching (b).

Step 7 — Side seams

Place front pieces on back piece, right sides facing. Pin side edges together and stitch together 1.5 cm (5/8 in) from edges (= seam allowance width). Tie-off the beginning and end of each seam with backstitching. Press seam allowances open.

Step 8 — Neck

Draw a line 3 cm (1 1/4 ins) from the neck edge and from each front edge. Fold the neck edge to the outside, up to this marked line, pin it in place, and press. Fold the front edges to the outside in the same manner. Edgestitch these allowances in place.

Step 9 — Fringe braid

Pin the straight edge of the fringe braid to the hem edge of the cape and fold the front edges of the braid under, 1 cm (3/8 in) wide, at front edges of cape. Topstitch close to the edge of the braid and 7 mm (1/4 in) from the edge. Finally, sew the metals clasps to the cape fronts by hand (see photo).

BurdaStyle

09/2011 Cape