

## 09/2011 Long blouse

By: burda style magazine

<http://www.burdastyle.com/projects/092011-long-blouse>

---



Long blouse burda style magazine patterns FAQ

# Materials

Batiste

---

## Step 1 — Preparation



Paper cut for ANSI A (German DIN A4) prints:

This pattern is printed on 8.5 × 11 sheets of plain paper. Do not scale or center pages before printing. Wait until all sheets are printed out before beginning to tape them together. **Do not cut out pattern pieces yet**— Arrange the sheets on a large, hard, flat surface so that they fit together, matching up like numbers and letters (i.e. 6A to 6A). To tape pattern together, fold under the margin of one piece (6A) and tape right against the line of it's matching number/letter (6A).

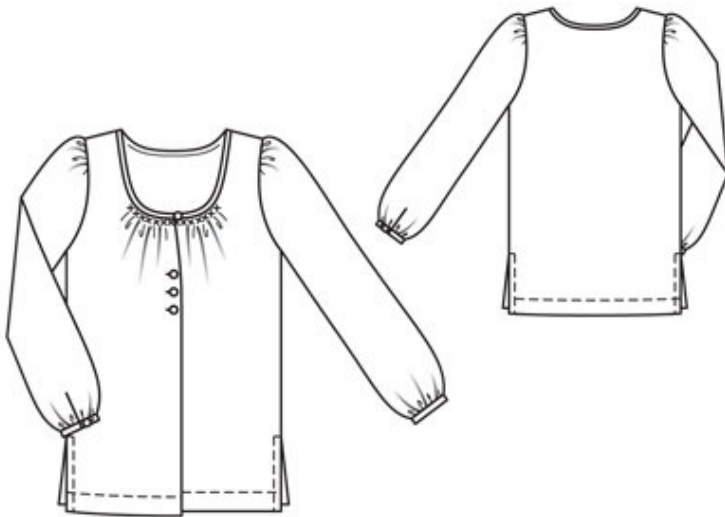
**burda style magazine pattern do not have seam allowance included.**

Seam and hem allowances to be added: Seams and edges 1.5 cm (5/8 in).

see example here: <http://www.burdastyle.com/projects/072011-jumpsuit/instructions/1>

---

## Step 2 — Cutting out



21front 2x

22back, on a fold 1x

24sleeve 2x

a) bias binding strip for neck edge, a total of 73  $\hat{=}$  74  $\hat{=}$  76  $\hat{=}$  79  $\hat{=}$  80 cm long, 3 cm (1 1/4 ins) wide (incl. allowances),

b) 2 bias binding strips for sleeve vents, 12 cm (4 3/4 ins) long, 2.5 cm (1 in) wide (incl. allowances),

c) 2 sleeve bands, 21.5  $\hat{=}$  22  $\hat{=}$  22.5  $\hat{=}$  23  $\hat{=}$  23.5 cm (8 1/2  $\hat{=}$  8 3/4  $\hat{=}$  9  $\hat{=}$  9 1/8  $\hat{=}$  9 1/4 ins) long, 3 cm (1 1/4 ins) wide,  $\hat{A}$ -finished width 1.5 cm (5/8 in).

Interfacing: See pattern layout.

### Step 3 — Side seams

Stitch side seams, leaving slits open. Press the seams open. Stitch shoulder seams. Press allowances onto back.

### Step 4 — Facings

Trim allowance on inside facing edges to 7 mm (1/4 in) wide. Neaten edges. Press allowance to inside and stitch. Press self-facings to inside and baste to neck edge, next to marked seam line.

## Step 5 — Bind neck edge

Trim away seam allowance on neck edge. Gather each front neck edge between asterisks to 7 1/2— 7 1/2 cm (23/4— 23/4— 23/4— 3— 3 ins). Fold binding strip lengthwise, wrong side facing in, and press so that one half is 2 mm (a scant 1/8 in) wider. Unfold strip out flat again. Now turn each long edge of strip in to the pressed fold and press again. Unfold narrower half of binding strip and stitch to right side of neck edge, 7 mm (1/4 in) from edge, along the pressed fold. Turn binding strip up and turn ends in. Turn wider half of binding strip to inside and baste. Work from right side to stitch along line of joining seam. Sew ends of binding closed.

---

## Step 6 — Sleeve vents

Slash the sleeve vents as marked. Spread the cut edges open to a straight line and stitch to the binding strip, as narrowly as possible. Press the binding strip over the joining seam into the vent, fold under to 5 mm (3/16 in) wide, turn edge under, and baste to joining seam. Mitre binding on inside at bottom of slit. On front edges of vents, turn binding to inside and baste to lower edge. Stitch sleeve seams.

---

## Step 7 — Lower sleeve edges

Gather lower sleeve edges to match sleeve bands. Stitch sleeve bands to lower sleeve edges. Press allowances of joining seams and of other long sleeve band edges onto sleeve bands. Fold sleeve bands half to outside and stitch across ends. Turn sleeve bands right side out and baste inside edges to joining seams. Topstitch sleeve bands close to joining seams.

---

## Step 8 — Sleeve caps

Gather sleeve caps. Set in sleeves.

---

## Step 9 — Hem

Unfold facings at hem. Turn hem allowances to inside, turn edges under, and stitch 4.5 cm (17/8 ins) from edge. Turn allowances on slit edges to inside, turn edges under and stitch 1 cm (3/8 in) from edge. Turn facings to inside and sew to hem edge.

---

## Step 10 — Buttonholes

Work buttonholes in right front. Make a thread loop on upper corner of right front (binding). Sew button to end of binding on left front, to match loop. Fasten each sleeve band with a button and a thread loop. Use embroidery thread in a contrasting colour to sew on buttons.

---

## Step 11 — Cross stitches

Use embroidery thread in a contrasting colour to embroider cross stitches, approx. 5 × 5 mm (3/16 in x 3/16 in), over gathered front neck edges, below binding.

---

**BurdaStyle**