

Emily

By: burdastyle

<http://www.burdastyle.com/projects/emily>



Finally! One of your long awaited basics. The Emily Blouse is a semi-fitted Blouse with an optional ueberlong sleeve that wrinkles on the elbow. Also the cuffs can be done longer than usual and folded over. We chose a vivid small print for the inside of the cuffs and the collar to create a fun and different feel for one of the most basic pieces of our wardrobe.

Materials

Striped shirting, flower print shirting

Step 1

**burda Download-Pattern
Blouse 8153 - Instructions**

average fitted

burda sizes	45 ins / 114 cm										55 ins / 140 cm									
	38	38	40	42	44	46	48	50	38	38	40	42	44	46	48	50				
A	2 1/4	2 1/4	2 1/4	2 1/4	2 1/4	2 1/4	2 1/4	2 1/4	1 1/4	1 1/4	1 1/4	2	2	2 1/4	2 1/4	2 1/4				
m	2,05	2,05	2,05	2,05	2,45	2,45	2,45	2,45	1,50	1,50	1,50	1,80	1,80	1,90	1,90	1,90				
B	2 1/4	2 1/4	2 1/4	2 1/4	2 1/4	2 1/4	2 1/4	2 1/4	1 1/4	1 1/4	1 1/4	1 1/4	1 1/4	1 1/4	1 1/4	1 1/4				
m	2,05	2,05	2,05	2,10	2,40	2,40	2,40	2,40	1,40	1,40	1,40	1,40	1,40	1,65	1,65	1,65				

→ with nap * without nap

- right side
- wrong side
- interfacing
- lining
- batting

Blouse popelin, cotton satin

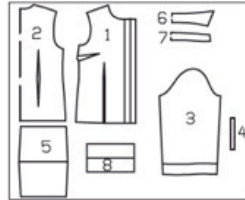
AB: Interfacing
A: 24" x 40" (60 cm x 100 cm)
B: 24" x 28" (60 cm x 70 cm)

A: 5" (12 cm) AB: 3/8" (0,5 cm)

A B: 24 1/2" - 26 1/2" (63-67 cm)

A B: 34 1/2" - 45" (86-114 cm)

Patternpieces:



PATTERN PIECES

- A B 1 front 2x
- A B 2 back 1x
- A B 3 sleeve 2x
- A B 4 vent facing 2x
- A 5 cuff 2x
- A B 6 collar 2x
- A B 7 collar band 2x

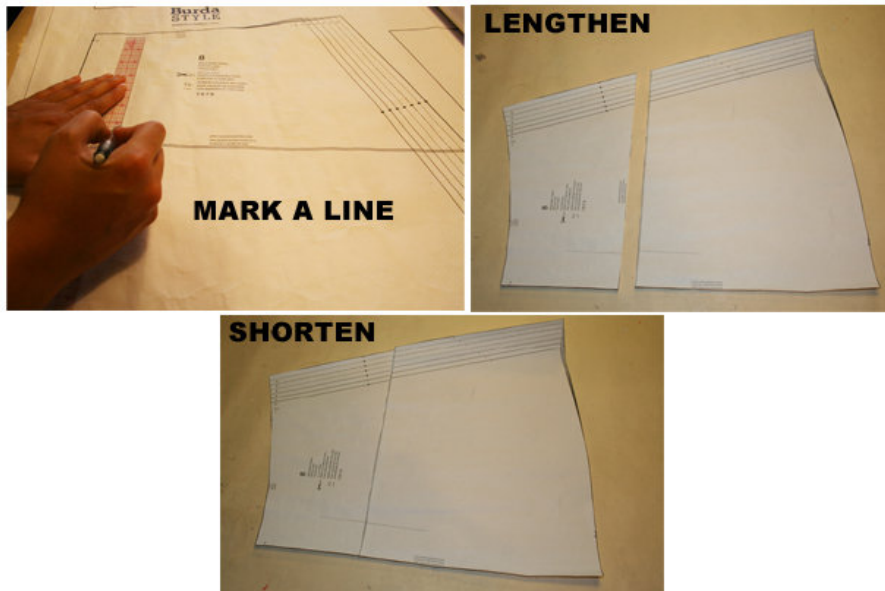
Step 2



The patterns can be printed out at the copy shop. If you decide to print them at home, follow the instructions: Paper cut for ANSI A (German DIN A4) prints: The patterns are printed out with a thin frame. Wait until all sheets are printed out. Arrange the sheets so that they fit together (see additional page with the overview of the prints). Fold the single sheets on the upper and

right edge along the thin frame lines. Begin with the left lower sheet and then tape the frame lines together precisely.

Step 3



ADJUST PATTERN SIZES

Select your size according to the Burda-dimension table: dresses, blouses, jackets and coats according to the bust size, trousers and skirts according to the hip width. Change the pattern to fit your measurements if they deviate from the Burda-size chart. Cut out the pattern according to your size.

Refer to our “ Adjust patterns for mixed sizes” technique

LENGTHENING OR SHORTENING THE PATTERN PIECES

Our pattern is calculated for a height of 5’ 6” (168 cm). If you are taller or shorter, you can adjust the pattern pieces along the lines marked “lengthen or shorten here”. This way the proper fit is maintained.

Always adjust all pattern pieces along the same line to the same degree.

How to lengthen and shorten pattern pieces:

Cut the pattern pieces along the marked lines

To lengthen, slide the two halves of the pattern piece as far apart as necessary.

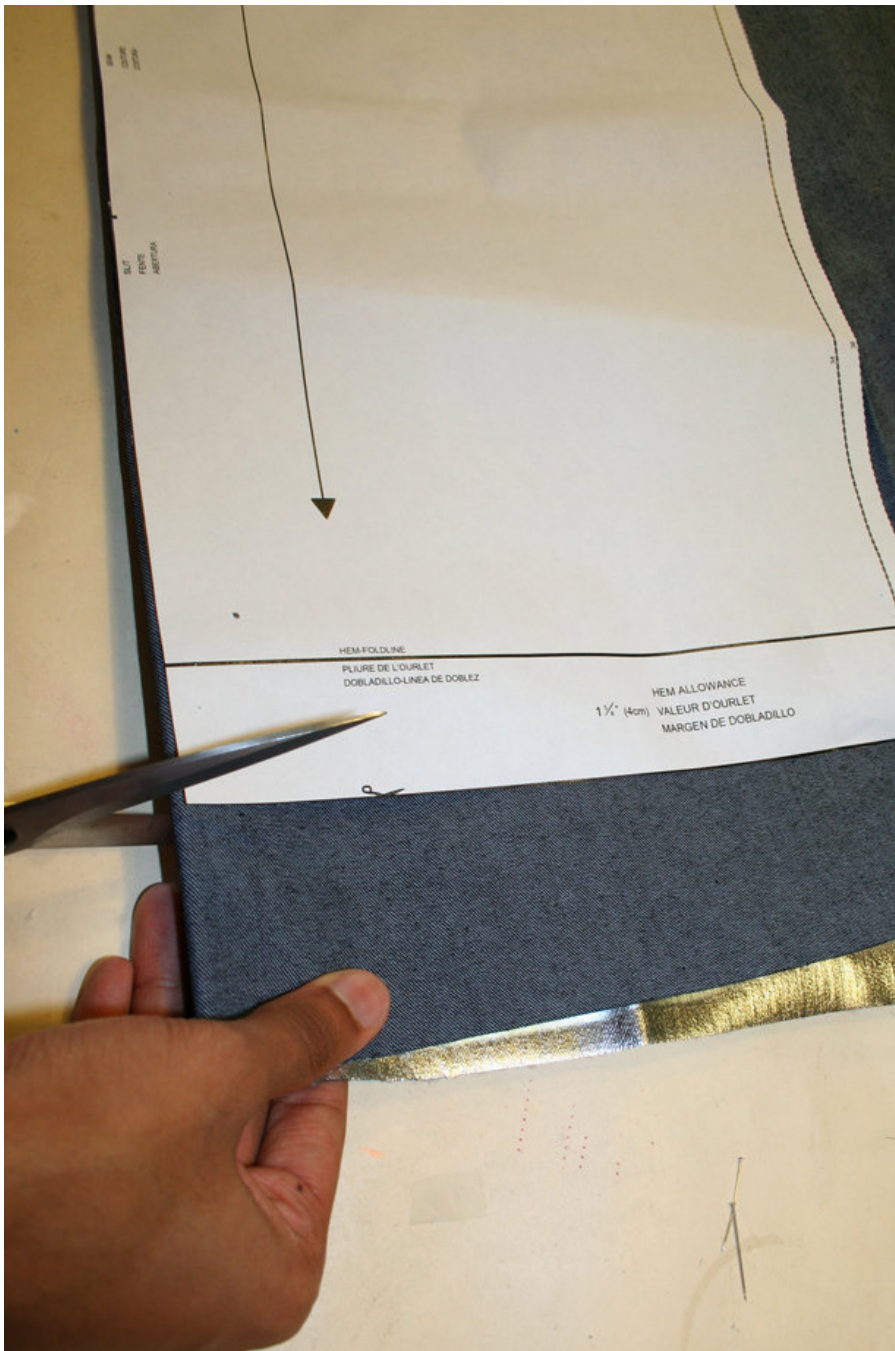
To shorten, overlap the two halves of the pattern piece as far as necessary. Blend the side edges.

A

Sizes 12 to 24 (38 to 50)

Mark the top buttonhole on piece 1 (AB) and piece 15 (D) the same distance from edge of neckline as for size 10 (36). The bottom buttonhole is in the same place for all sizes. Mark the other 3 buttonholes evenly in between. The buttonholes on pieces 1 and 15 must correspond exactly.

Step 4



CUTTING OUT

FOLD () means: Cut on the fold, the fold being the center of the pattern piece, but never a cut edge or seam. The piece should be cut double, with the fold line forming the center line. Pattern pieces that are outlined with a broken line in the cutting diagrams are to be placed face down on the fabric. The cutting diagrams on the pattern sheet show how the pattern pieces should be placed on the fabric.

The cutting diagrams show the placement of the pattern on the fabric.

For a single layer of fabric, the pattern pieces are pinned to the right side. For double layers of fabric, the right sides are facing and the pattern pieces are pinned to the wrong side. The pattern pieces that are shown extending over the fold of the fabric in the cutting diagram should be cut last from a single layer of fabric.

AB

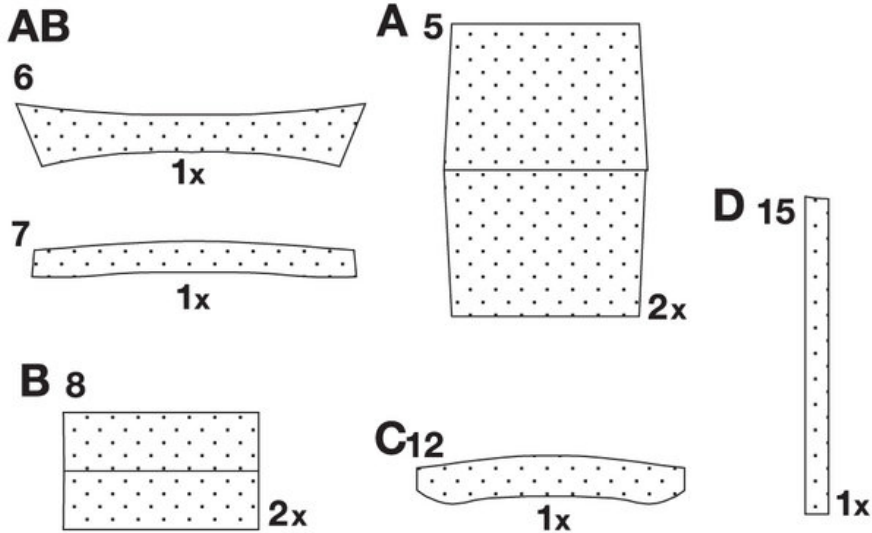
Cut out the following pattern pieces in the required size from the pattern sheet:

For the BLOUSE view A pieces 1 to 7

Please note: The overlong sleeves of blouse view A is a deliberate fashion feature.

Step 5

INTERFACING



SEAM AND HEMLINE ALLOWANCES are included on an average:

5/8" (1.5 cm) for all edges and stitches. Using BURDA copying paper, transfer the lines and signs of the pattern onto the wrong side of the fabric. Instructions can be found in the packaging.

Sewing

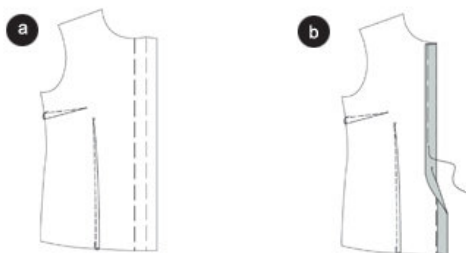
While sewing, the right sides of the fabric are facing.

Transfer all lines of the pattern onto the right side of the fabric using basting stitches.

INTERFACING

Cut interfacing as illustrated and iron on the wrong side of the fabric pieces.

Step 6



BLOUSE

Darts

Stitch bust darts on front pieces and waist darts on front and back toward points of darts. Knot ends of thread at points of darts. Press bust darts down, press waist darts toward front and back center. (a)

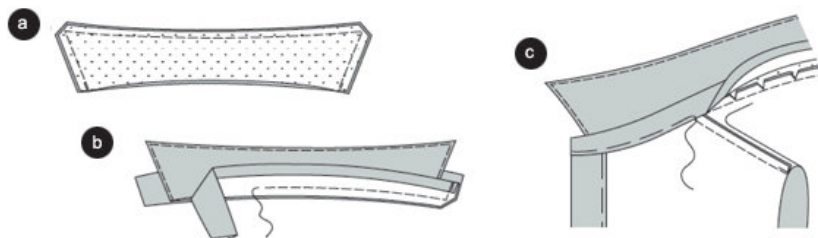
Front Edges

Press self-facing on front to the inside first on the FOLD LINE and then on the FACING FOLD LINE, baste. (b)

Shoulder Seams

Lay front right sides together with back. Baste shoulder seams (seam number 1) and stitch, easing back shoulder edges. Trim seam allowances, neaten together and press onto back.

Step 7



Collar with Collar band

Lay collar pieces together. Baste and stitch edges together as illustrated. Trim seam allowances, trim corners diagonally. Turn collar. Baste edges, press and topstitch close to edges. Baste open edges together. (a)

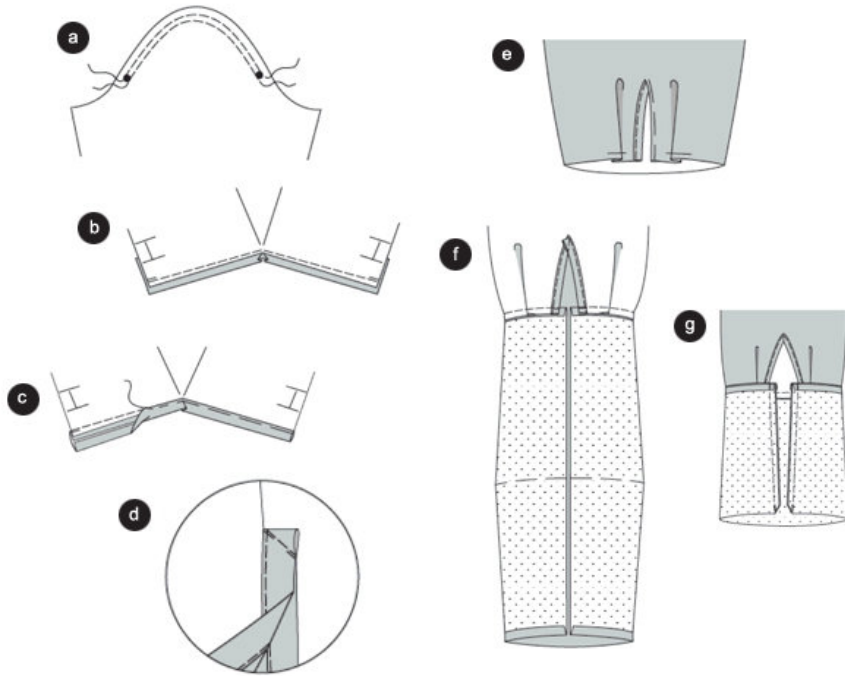
Press seam allowance at joining edge of non-interfaced collar band piece to the inside. Pin this collar band piece to the interfaced side of the collar, pin interfaced collar band piece to the other side of the collar. Baste collar band pieces together (seam number 2) and stitch, catching collar. Trim seam allowances, trim corners diagonally. Turn collar band, baste edges and press. (b)

Baste interfaced collar band piece right sides together with edge of neckline (seam number 3). Stitch. Trim seam allowances, clip curves and press onto collar band. Baste non-interfaced collar band piece along joining seam. Work from the right side of the blouse to topstitch close to all edges of collar band, catching inside half at joining seam. ©

Side Seams

Lay fronts right sides together with back. Stitch side seams (seam number 4). Trim seam allowances, neaten together and press to one side.

Step 8



Sleeves

To ease sleeve caps, stitch two closely spaced lines of machine basting (longest stitch setting) from _ to _. (a)

Clip lower edge of sleeve at slash mark. Spread cut edges open to a straight line as illustrated and pin to sleeve vent facing. Stitch. Press facing over joining seam. (b)

Turn facing half to inside, turn in and baste along joining seam. Stitch. © Close vent right sides facing and topstitch end of vent diagonally as illustrated like a small dart (d).

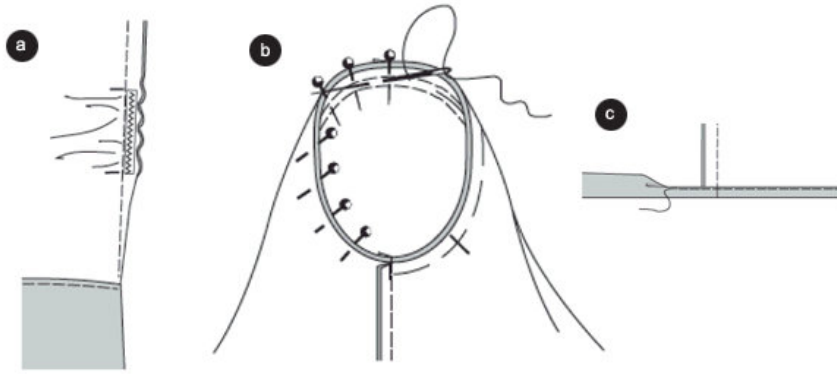
Baste facing to inside at front edge of vent. Press. Fold pleat at lower edge of sleeve in arrow direction, baste. Fold sleeve lengthwise, right side in. Stitch sleeve seams (seam number 5). Neaten seam allowances together and press to one side. (e)

Baste cuff piece on lower edge of sleeve (seam number 7) and stitch. Press seam allowances onto cuff. Press seam allowance at other long edge to inside. (f)

Fold cuff on fold line, right side in. Stitch across ends. Trim seam allowances, trim corners diagonally. Baste cuff to inside on fold line, baste along joining seam. Press. Work from the right fabric side of the sleeve to topstitch close to all edges of cuff, catching inside half at joining seam. (g)

Work **BUTTONHOLES**, sew on **BUTTONS**.

Step 9



Elastic

Cut elastic into two equal pieces of 21â” 2" (6 cm) each.

Zigzag stitch elastic onto seam allowance of sleeve seam between the markings, stretching elastic as you stitch. (a)

Setting in Sleeves

To ease sleeve caps, pull bobbin threads.

Pin sleeve into armhole, right sides facing. When setting in sleeves, 4 points are important for proper fit: (b)

_ Match markings 6 on sleeve and front. Match sleeve and side seams. Match marking at sleeve cap with shoulder seam. Distribute fullness evenly to avoid forming tucks. Baste and stitch sleeve from sleeve side. Trim seam allowances, neaten together and press toward sleeves.

Hem

Press hem to inside, turn in and baste. Stitch narrow hem. Work **BUTTONHOLES** in right fastening edge and in collar band. Sew on **BUTTONS** along center front of left front and in collar band. ©

BurdaStyle

Emily