

# burda style magazine - 2/2010 Full Skirt with Tie

By: burda style magazine

<http://www.burdastyle.com/projects/burda-style-magazine-22010-fu>

---

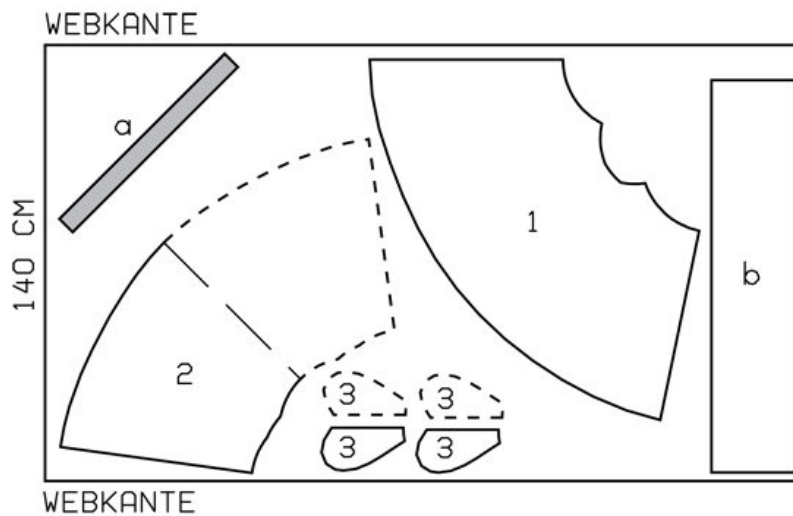
Full Skirt with Tie burda style magazine patterns FAQ

## Materials

Gingham Check Taffeta

---

## Step 1 — Preparation

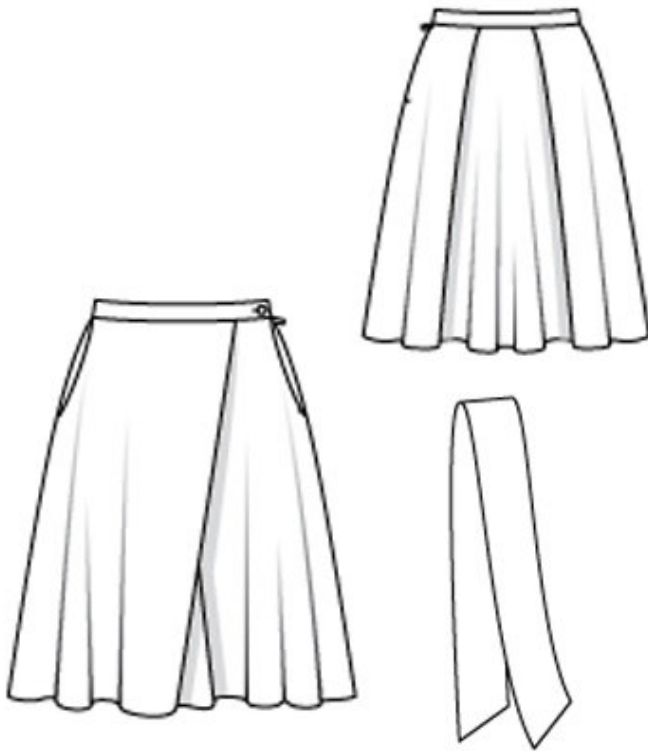


103 B 36-44

Trace the pattern pieces from the pattern sheet. Follow lines and details for view B. Glue pieces 1, 1a and 1b together on the joining lines.

---

## Step 2 — Cutting Out



1 front skirt panel 1x

2 back skirt panel, on a fold 1x

3 pocket piece 4x

a) waistband with 3 cm (1 1/4 in) underlap, cut on bias, 71 — 75 — 79 — 83 — 87 cm (28 — 29 3/4 — 31 1/4 — 32 3/4 — 34 1/4 ins) long, 6 cm (2 1/2 ins) wide, finished width 3 cm (1 1/4 ins),  
 b) sash, 122 — 126 — 130 — 134 — 138 cm long (48 — 49 3/4 — 51 1/4 — 52 3/4 — 54 1/2 ins), 26 cm (10 1/4 ins) wide, finished width 13 cm (5 1/8 ins).

Interfacing: Iron on skirt waistband.

### Step 3 — Right pocket in side seam

Stitch right side seam on outer skirt panels below pocket opening. Pin pocket pieces, right sides together with seam allowances of pocket opening edge from the inside and stitch on directly along marked seam lines. Stitch pocket pieces close to seam below pocket opening. Press pocket pieces forward and stitch together. Baste upper edges of pocket pieces.

### Step 4 — Left pocket in side seam and zip

Pin one pocket piece right sides together with left pocket opening edge of front skirt panel, stitch from upper edge to marking. Clip seam allowances at marking. Turn pocket piece to inside. Press pocket opening edge. Lay other pocket piece right sides together with stitched pocket piece. Stitch lower and front edges of pocket pieces together. Baste pocket pieces to left side seam edge at upper edge of skirt panel and below pocket opening. Sew invisible zip to left opening edges. Stitch left side seam from lower edge to zip.

---

## Step 5 — Pleats

Fold pleats in skirt panels in arrow direction and baste. For the large pleat, fold front skirt panel on pleat fold line wrong side facing in. Place fold at abutting line and pin. Baste fold at upper edge of skirt panel.

---

## Step 6 — Waistband

Stitch waistband to upper edge of skirt, leaving overlap extending at back opening edge. Press seam allowances of joining seam and at other long edge of waistband onto waistband. Fold waistband lengthwise, stitch across ends. Turn right side out. Sew on inside edge by hand, sew edges of underlap together. Topstitch waistband close to joining seam. Work buttonhole in front end of waistband.

---

## Step 7 — Hem Allowances

Press hem allowances to inside, turn in and stitch.

---

## Step 8 — Sewing the sash

Fold sash piece lengthwise, right side facing in. Trim ends at a slant. Stitch edges together, leaving a section of seam open for turning. Turn sash right side out. Sew opening closed.

---

**BurdaStyle**

burda style magazine - 2/2010 Full Skirt with Tie