

11/2010 Skirt with hem frills

By: burda style magazine

<http://www.burdastyle.com/projects/112010-skirt-with-hem-frills>



Skirt with hem frills burda style magazine patterns FAQ

Materials

woollen fabric

Step 1 — Preparation

Größen, Tailles, Sizes						2		3		4		
1	N		L		K		Oberweite Tour de poitrine Bust		Tailleweite Tour des taille Waist		Hüftweite Tour des hanches Hip	
	5'6" 168 cm		5'9" 176 cm		5'3" 160 cm		ins	cm	ins	cm	ins	cm
	US	Eur.	US	Eur.	US	Eur.						
	6	32	6	64	6	16	30	76	23	58	32 ½	82
	8	34	8	68	8	17	31 ½	80	24 ½	62	34	86
	10	36	10	72	10	18	33	84	26	66	35 ½	90
	12	38	12	76	12	19	34 ½	88	27 ½	70	37	94
	14	40	14	80	14	20	36 ½	92	29 ½	74	38 ¾	98
	16	42	16	84	16	21	37 ¾	96	30 ¾	78	40 ¼	102
	18	44	18	88	18	22	39 ½	100	32 ½	82	41 ¼	106
	20	46	20	92	20	23	41	104	34	86	43 ½	110
	22	48	22	96	22	24	43 ½	110	36 ¼	92	45 ¼	116
	24	50	24	100	24	25	45 ¾	116	38 ¾	98	48	122
	26	52	26	104	26	26	48	122	41	104	50 ½	128
	28	54	28	108	28	27	50 ½	128	43 ½	110	52 ¼	134
	30	56	30	112	30	28	52 ¾	134	45 ¾	116	55 ¼	140
	32	58	32	116	32	29	55 ¼	140	48	122	57 ½	146
	34	60	34	120	34	30	57 ½	146	50 ½	128	60	152

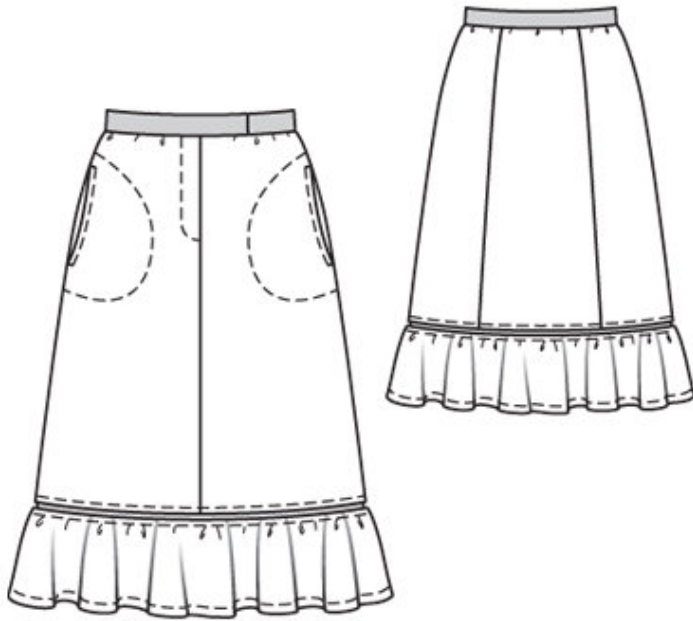
Trace the pattern pieces from the pattern sheet. Trace the pocket piece from piece 21 as a separate pattern piece â— it is the same for all sizes.

Seam and hem allowances:

Seams and edges 1.5 cm (5/8 in).

No allowance on lower edge of skirt panels nor on long edges of frill Â—pieces.

Step 2 — Cutting out



21 front skirt panel 2x

22 pocket piece 2x

23 centre back skirt panel,

on a fold 1x

24 side back skirt panel 2x

a) frill, of two pieces, each 80 — 82 — 84 — 86 — 88 cm (31 1/2 — 32 1/2 — 33 — 34 — 34 3/4 ins) wide, 15 cm (6 ins) long,

b) left underlap piece, 17 cm (6 3/4 ins) long, 5 cm (2 ins) wide, finished width 2.5 cm (1 in),

c) waistband, with 8 cm (3 1/4 in) overlap and 3 cm (1 1/4 in) underlap, 82 — 86 — 90 — 94 — 98 cm (32 1/2 — 34 — 35 1/2 — 37 — 38 3/4 ins) long, 6 cm (2 1/2 ins) wide, finished width 3 cm (1 1/4 ins).

Interfacing: Iron to waistband.

Step 3 — Seams

Stitch section seams on back skirt panels. Stitch centre front seam, leaving opening for zip. Clip seam allowance of left front skirt panel at top of seam. Press seam allowances open.

Step 4 — Zip opening

Press self-facings on slit edges to inside. Stitch along centre front on the right and 5 mm (3/16 in) before centre front on the left. Stitch zip under left slit edge of (underlap), close to teeth of zip. Pin slit closed, matching centre fronts. Stitch loose zip tape to right facing, not catching trouser piece. Baste facing in place.

Topstitch opening from top to 3 cm (1 1/4 ins) before the end, as marked. Fold underlap piece lengthwise and stitch across bottom end. Turn right side out. Lay underlap under left edge of slit and pin to facing. Stitch facing to underlap, close to zip joining seam. Lay opening closed again and topstitch to the end, catching underlap.

Step 5 — In-seam pockets

Stitch side seams, leaving openings for pockets. In-seam pockets: Turn allowance on each pocket opening edge of front skirt panel in to a width of 1 cm (3/8 in) and stitch in place, and stitch horizontally at ends of pocket opening. Pin pocket pieces right sides together with seam allowances of back pocket opening edges and stitch in place, directly along marked seam lines. Press pocket pieces forward and baste to wrong side of front skirt panel. To stitch, pin paper pattern piece for pocket to right side of front skirt panel. stitch along edge of pattern piece.

Step 6 — Skirt panels

Gather upper edge of front skirt panels to 18 — 19 — 20 — 21 — 22 cm (7 — 7 1/2 — 8 — 8 3/8 — 8 3/4 ins) wide and —gather skirt back to 35 — 37 — 39 — 41 — 43 cm (13 3/4 — 14 1/2 — 15 1/2 — 16 1/4 — 17 ins) wide.

Step 7 — Waistband

Fold waistband in half lengthwise, wrong side facing in. Press upper edge of waistband. Unfold waistband again. Lay petersham ribbon on outer half of waistband and edgestitch in place. Stitch waistband to upper edge of skirt, with waistband overlap extending at right and stitching waistband underlap to underlap of slit edge at left. Press seam allowances of joining seam onto waistband. Attach hook of fastener to inside half of waistband, 1 cm (3/8 in) from right front end. Fold waistband right side facing in and stitch across front ends and along lower edge of overlap. Turn inside edge of waistband in, about 5 cm (2 ins) long, and baste, then lay remaining edge flat over joining seam (not turned in). Work from right side to stitch inside edge of waistband in place, along line of joining seam. Attach bar of fastener to waistband, to match hook. Work a buttonhole for inside button in left end of waistband. Sew button to inside of waistband, to match.

Step 8 — Lower skirt

Measure circumference of lower skirt edge on remaining petersham ribbon and stitch ends together. Pin lower edge of skirt to upper edge of petersham ribbon, 7 mm (1/4 in) wide, with wrong side facing right side. Stitch 5 mm (3/16 in) from edge. Stitch side seams of hem frill. Gather upper edge of frill. To do this, machine baste (longest stitch setting) 4 and 6 mm (a generous 1/8 in and scant 1/4 in) from edge. Pin upper edge of frill to lower edge of petersham ribbon, 7 mm (1/4 in) wide, and stitch 5 mm (3/16 in) from edge. Topstitch 7 mm (1/4 in) from lower edge of frill — edge can be left to fray slightly.

BurdaStyle

11/2010 Skirt with hem frills