

# 11/2011 Long black gown with front placket

By: burda style magazine

<http://www.burdastyle.com/projects/112011-long-black-gown-with-f>

---



11/2011 Long black gown with placket burda style magazine patterns FAQ

## Materials

Stretch crpe with widthwise stretch

---

## Step 1 — Preparation



Paper cut for ANSI A (German DIN A4) prints:

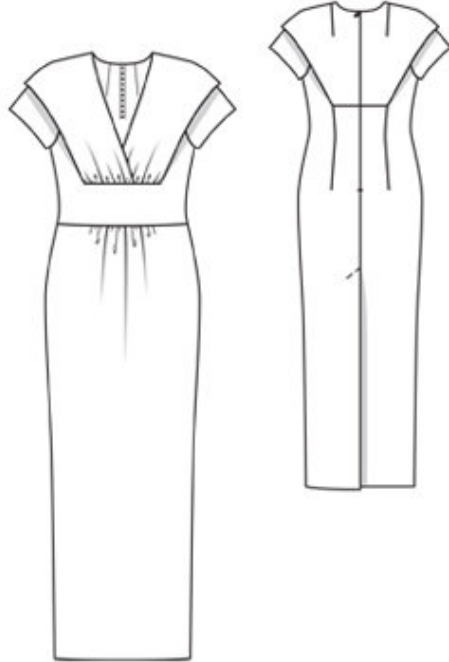
This pattern is printed on 8.5 × 11 sheets of plain paper. Do not scale or center pages before printing. Wait until all sheets are printed out before beginning to tape them together. **Do not cut out pattern pieces yet**— Arrange the sheets on a large, hard, flat surface so that they fit together, matching up like numbers and letters (i.e. 6A to 6A). To tape pattern together, fold under the margin of one piece (6A) and tape right against the line of it's matching number/letter (6A).

**burda style magazine pattern do not have seam allowance included.**

Seam and hem allowances to be added: Seams and edges 1.5 cm (5/8 in).

---

## Step 2 — Cutting out



Top fabric:

21front, on a fold 1x

22upper front 2x

23front skirt panel, on a fold 1x

24upper back 2x

25back 2x

26sleeve front 2x

27sleeve back 2x

Lining:

28inside front piece 4x

29inside back piece 4x

a) bias strip to bind seams, a total of 3.60 — 3.70 — 3.90 — 4.00 — 4.20 m (4 — 4 1/8 — 4 1/4 — 4 3/8 — 4 5/8 yds) long, 4 cm (15/8 ins) wide (incl. allowances).

Interfacing: See pattern layout. Also iron small pieces of interfacing to wrong side of front and back pieces (darts), over corners of seams.

### Step 3 — Skirt

Gather the upper edge of the front skirt panel between the asterisks. Stitch the front skirt panel to the front (seam number 1). Press seam allowances up.

## Step 4 — Front

Stitch one inside front lining piece to front, from each seam mark (seam number 2) to the corner, right sides facing. Work from the inside to pin both remaining pieces to the front and stitch pieces in place, along existing seams. Clip the seam allowance of the front diagonally into the corners. Turn inside fronts forward and baste together. Treat these as one layer of fabric from now on.

---

## Step 5 — Back

On each back piece, cut along the centre of the dart, between the marked lines, up to approx. 5 cm (2 ins) before the pointed end, and clip diagonally into corner at top. Stitch the inside back lining pieces to the back pieces as instructed for the front (seam number 3), not clipping into corners. Turn the inside back pieces back and baste together. Treat these pieces as one layer of fabric from now on. Stitch back darts exactly from corner. Press darts toward centre back.

---

## Step 6 — Shoulder

Stitch shoulder seams (seam number 4).

---

## Step 7 — Upper back

On the upper back pieces, stitch the darts and press toward centre back. Stitch the shoulder seams of the upper pieces (seam number 5). On side edges, trim allowance to 1 cm (3/8 in) wide, and press to inside. Bind edge of pressed seam allowances with bias lining strip, 5 mm (3/16 in) wide. Sew bound allowances in place by hand. Gather upper fronts between asterisks to 8.5 — 9 — 9.5 — 10.5 — 11 cm (33/8 — 31/2 — 33/4 — 41/4 — 4 3/8 ins).

---

## Step 8 — Upper front

Work from the inside to stitch the upper front and back pieces to the neck edge of the dress — right side facing wrong side. Trim seam allowances. Turn the inside pieces over the seam allowances and stitch in place, close to seam. Turn upper pieces to outside and press edges.

---

## Step 9 — Lower edges

Baste the lower edges of the upper fronts to the inside pieces (lining). Pin the upper right front to the left piece, matching centre fronts. Baste the lower edges together. Stitch the lower edge of the upper front to the front piece, from corner to corner. Baste the lower edge of the upper back pieces to the inside pieces and to the back pieces, as far as the dart. Stitch the horizontal back seams, up to the dart. Press seam allowances of horizontal seams (in front and back) down and bind with bias lining strip.

---

## Step 10 — Zip

Sew invisible zip to the back opening edges, see the — Helpful Hint — on page 28. Begin at neck edge and leave top ends of zip tapes extending. Stitch the centre back seam from the vent to the zip. Press seam allowances open. Press left vent facing to inside and trim 1.5 cm (5/8 in) from the marked — left edge — line. Turn the right vent underlap onto the left back. To avoid needing to clip the allowance, press the allowance of the right back under, above the vent, tapering as you go. On the right back, press the vent facing

to the inside. Topstitch left back diagonally at top of vent as marked, catching the underlap. Turn in top ends of zip tapes and sew to neck edge, together with seam allowances.

---

## **Step 11 — Side seams**

Stitch the side seams (seam number 8). Stitch the upper sleeve seams and the lower sleeve seams. Press the sleeve hem allowances to the inside, bind the edges narrowly, and sew in place by hand. Set in the sleeves. Bind seam allowances of sleeve attachment seams.

---

## **Step 12 — Hem**

At hem edge, turn vent facings back again. Press hem allowance to inside and sew in place by hand. Turn facings to inside and sew to hem allowance.

---

**BurdaStyle**

11/2011 Long black gown with front placket