

# Maddy

By: burdastyle

<http://www.burdastyle.com/projects/maddy>

---



The pattern for this top that we call Maddy is quite unusual. The diamond in the center of the front holds together all the gathering. The top has many fabric options, from heavier wovens to lighter fabrics such as chiffons, cottons or satins. If you use a lightweight fabric, we would recommend adding a lining.

---

## Step 1

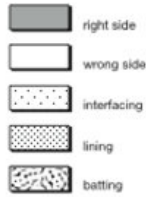
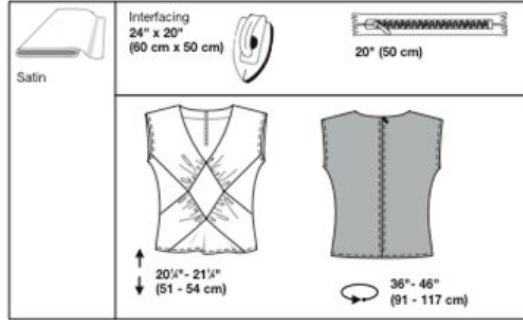
**burda Download-Pattern  
SHIRT 8132 C - Instructions**

●●●  
average

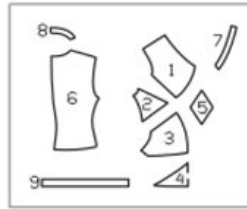
fitted

Sizes	45 ins / 114 cm										55 ins / 140 cm									
	US 36	10	12	14	16	18	20	22	10	12	14	16	18	20	22	24				
Yds	1 1/4	1 1/4	1 1/2	1 1/2	1 3/4	1 3/4	1 3/4	1 3/4	1 3/4	1 3/4	1 3/4	1 3/4	1 3/4	1 3/4	1 3/4					
m	1.05	1.05	1.25	1.30	1.30	1.40	1.40	1.00	1.00	1.05	1.05	1.05	1.10	1.10	1.10					

→ with nap



Pattern pieces:



**Pattern Pieces**

- 1 Upper Front 2x
- 2 Upper Side Front 2x
- 3 Middle Front 2x
- 4 Bottom Front 1x
- 5 Inset 2x
- 6 Back 2x
- 7 Front Facing 2x
- 8 Back Facing 2x
- 9 Bias strip/Sleeve 2x

**Step 2**

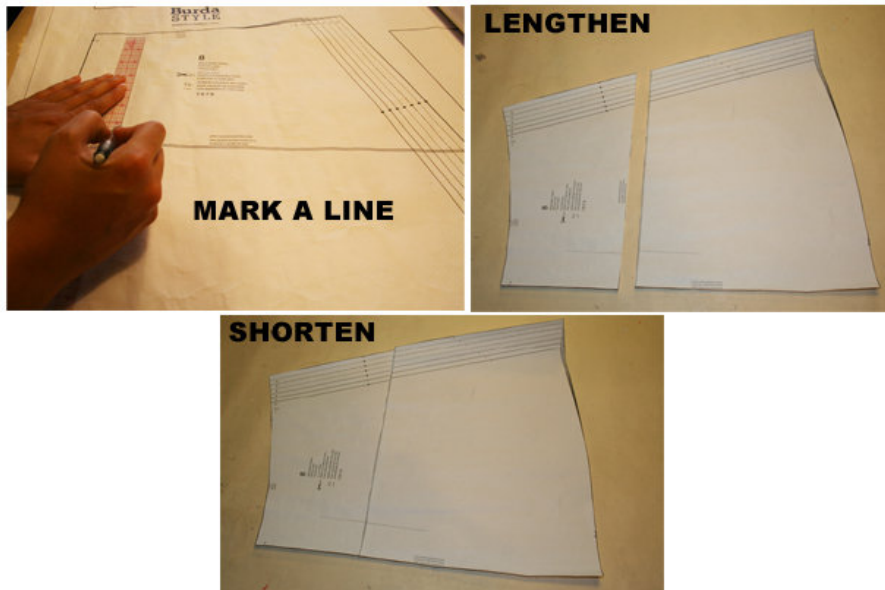


The patterns can be printed out at the copy shop. If you decide to print them at home, follow the instructions: Paper cut for ANSI A (German DIN A4) prints:

The patterns are printed out on 18 sheets with a thin frame. Wait until all sheets are printed out. Arrange the sheets so that they fit together (see additional page with the overview of the prints). Fold the single sheets on the upper and right edge along the thin frame lines. Begin with the left lower sheet and then tape the frame lines together precisely.

---

### Step 3



#### ADJUST PATTERN SIZES

Select your size according to the Burda-dimension table: dresses, blouses, jackets and coats according to the bust size, trousers and skirts according to the hip width. Change the pattern to fit your measurements if they deviate from the Burda-size chart. Cut out the pattern according to your size.

Refer to our [“ Adjust patterns for mixed sizesâ”](#) technique

#### LENGTHENING OR SHORTENING THE PATTERN PIECES

Our pattern is calculated for a height of 5â” 6â” (168 cm). If you are taller or shorter, you can adjust the pattern pieces along the lines marked “lengthen or shorten here”. This way the proper fit is maintained.

Always adjust all pattern pieces along the same line to the same degree.

How to lengthen and shorten pattern pieces:

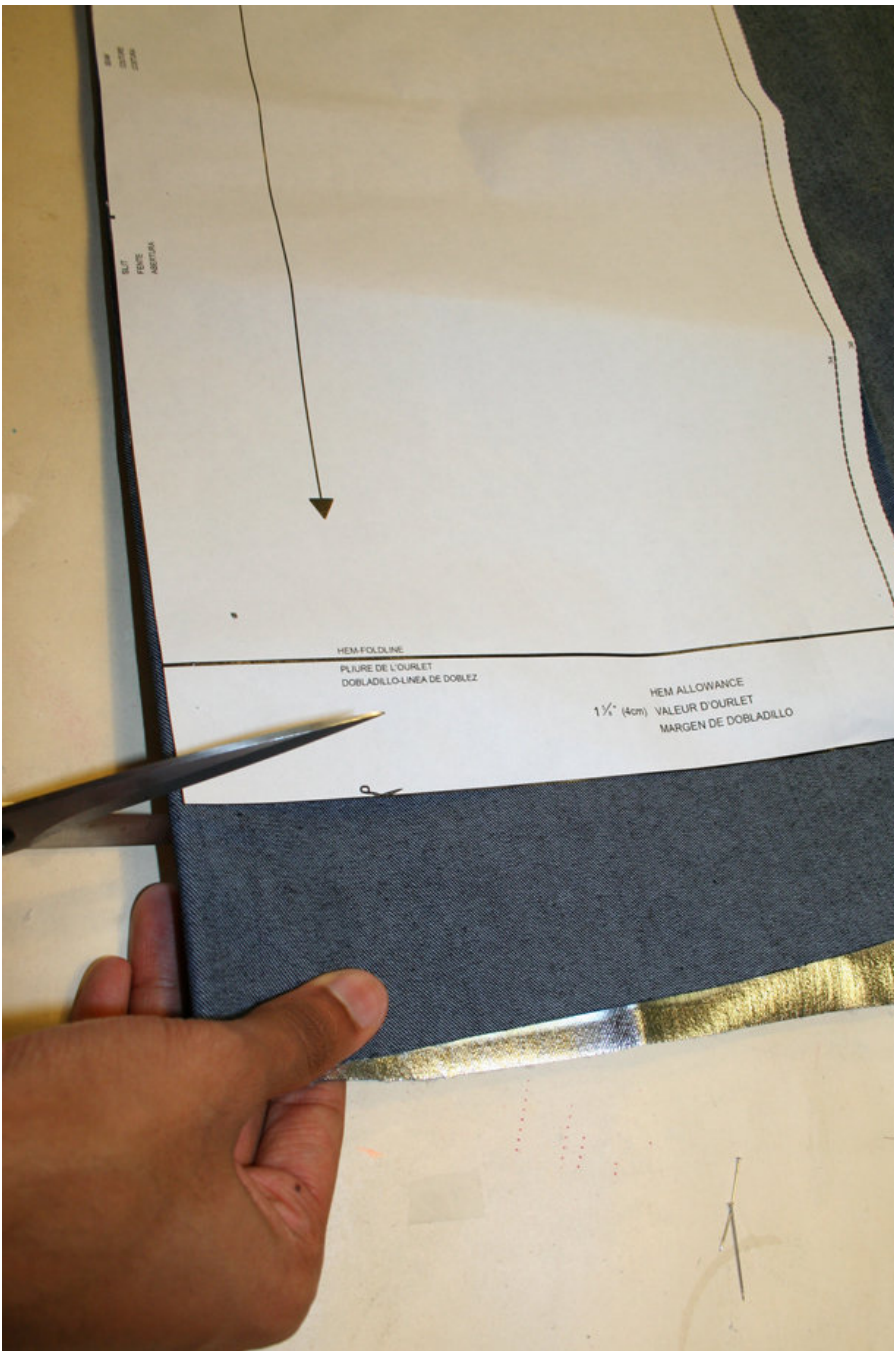
Cut the pattern pieces along the marked lines

To lengthen, slide the two halves of the pattern piece as far apart as necessary.

To shorten, overlap the two halves of the pattern piece as far as necessary. Blend the side edges.

---

### Step 4



## CUTTING OUT

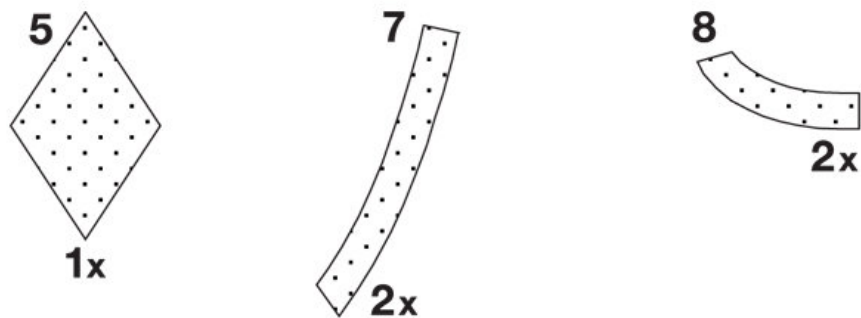
FOLD ( ) means: Cut on the fold, the fold being the center of the pattern piece, but never a cut edge or seam. The piece should be cut double, with the fold line forming the center line. Pattern pieces that are outlined with a broken line in the cutting diagrams are to be placed face down on the fabric. The cutting diagrams on the pattern sheet show how the pattern pieces should be placed on the fabric.

The cutting diagrams show the placement of the pattern on the fabric.

For a single layer of fabric, the pattern pieces are pinned to the right side. For double layers of fabric, the right sides are facing and the pattern pieces are pinned to the wrong side. The pattern pieces that are shown extending over the fold of the fabric in the cutting diagram should be cut last from a single layer of fabric .

## Step 5

### INTERFACING



SEAM AND HEMLINE ALLOWANCES are included on an average:

1 5/8" 8" (4 cm) for hem, 5/8" (1.5 cm) for all edges and stitches. Using BURDA copying paper, transfer the lines and signs of the pattern onto the wrong side of the fabric. Instructions can be found in the packaging.

#### Sewing

While sewing, the right sides of the fabric are facing.

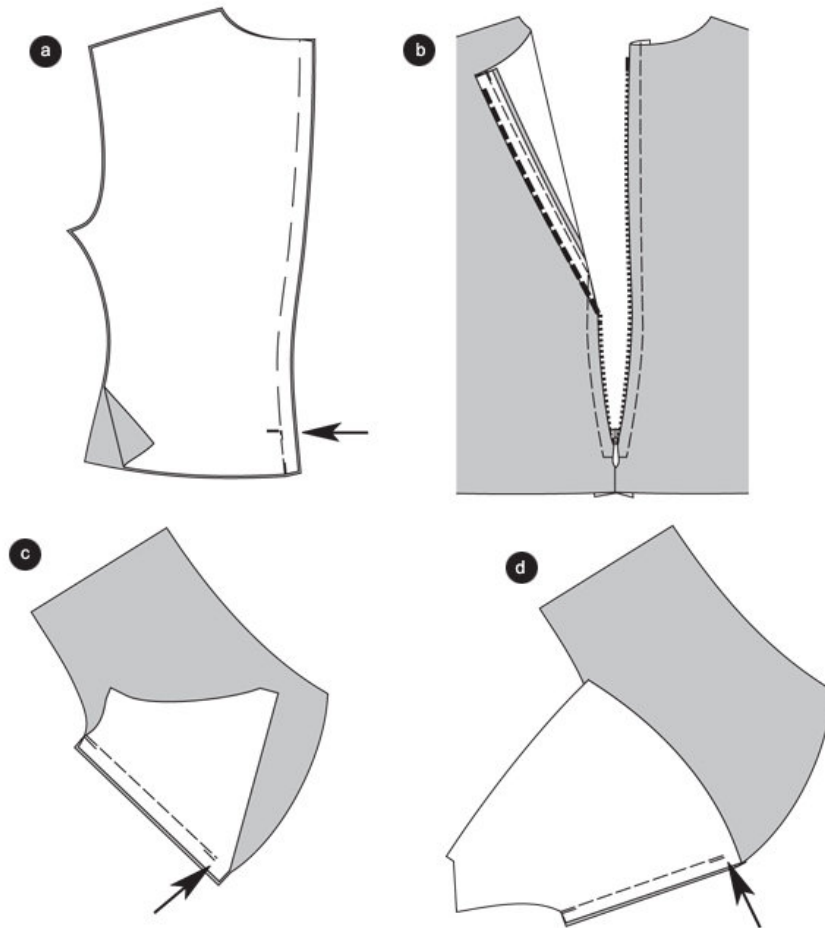
Transfer all lines of the pattern onto the right side of the fabric using basting stitches.

#### Interfacing

Cut interfacing according to the drawing on left and iron onto the wrong side of the fabric.

---

## Step 6



## Shirt

### Back Middle Seam/ Slit

Place back pieces onto each other right sides facing. Pin middle seam coming from the slit marking (arrow) going downward. Secure seam ends. Leave slit pinned. Trim seam allowances and finish. De-baste basting stitches at slit. (a)

### Zip

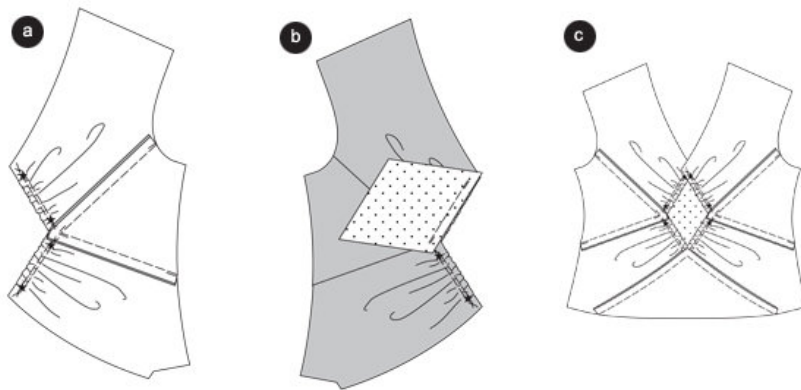
Pin zip under the slit edges so that the teeth of the zip are covered. Stitch zip with the zip foot. (b)

### Front Piece

Pin upper side pieces right sides facing onto the upper front pieces. Pin seams (seam number 6) and stitch. The seam ends at the seam allowance (arrow). Trim seam allowances, de-baste them held together and iron towards top. ©

Pin middle front pieces right sides facing onto the upper side front pieces (seam number 7) and stitch. The seam ends at the seam allowance (arrow). Trim seam allowances, de-baste them held together and iron towards top. (d)

## Step 7



### Inset

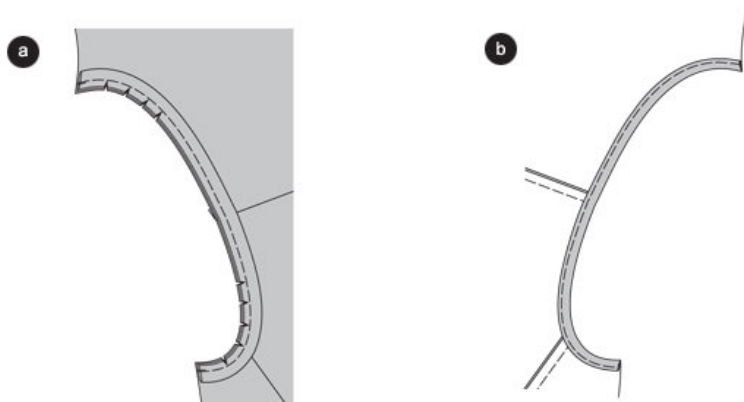
To tie in the upper and lower front pieces, stitch with 2 wide stitches in between the star symbols. Pull the bobbin thread lengthwise at the edges of the inset. Tie. Distribute width evenly. (a)

Stitch inset right sides facing first onto a front piece half (seam number 12) and then onto the other half, stitching exactly to the end of the seam/ the edges. Iron seam allowances. (b)

Stitch bottom front piece right sides facing onto the lower edge of the middle front pieces (seam number 14) and stitch, interrupting at the front middle. Secure seam ends. Trim seam allowances, de-baste them held together and iron towards top. Sow the second inset pieces folded onto the base seams on the inside. ©

---

## Step 8



### Shoulder seams

Place front pieces right sides facing onto the back piece, pin shoulder seams (seam number 10) and stitch. Trim seam allowances, de-baste them folded together and iron into the back piece.

### Sleeve base/ Bias

Trim seam allowances of the sleeve base back to 1 cm (. to . inch). Fold bias lengthwise, iron.

Pin bias right sides facing onto the sleeve base, the open edges lying atop the seam allowance. Stitch bias, allowing 1 cm (1/2 inch). Trim seam allowances and cut in. (a)

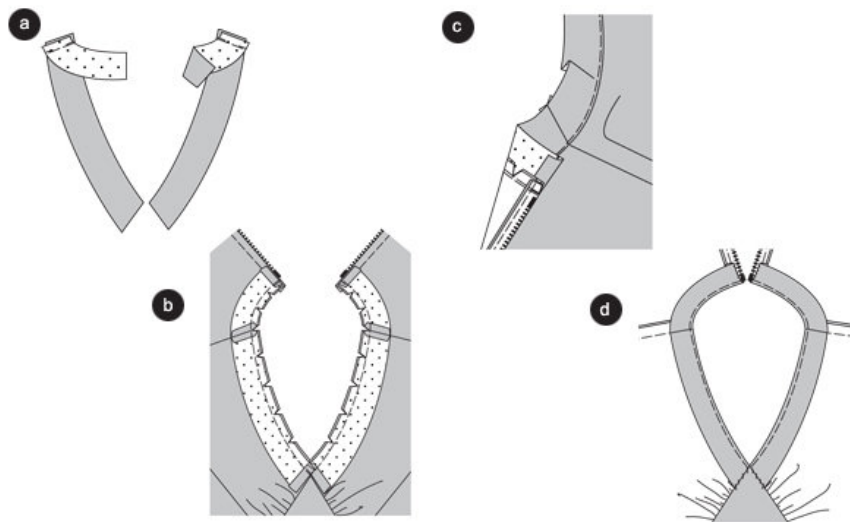
Turn bias inside out. Stitch sleeve base edges, allowing 0.5cm (1/4 inch). (b)

#### Side Seams

Pin and stitch side seams (seam number 13), trim seam allowances, de-baste them held together and iron into the back piece.

---

## Step 9



#### Neckline/ Facing

Place front facings right sides facing onto the back facings, stitch shoulder seams (seam number 11). Fold apart and iron seam allowances. De-baste lower facing edges. (a)

Pin facings right sides facing onto the neckline edges, shoulder seams are meeting. Fold in seam allowances of the front and back facing edges. Stitch facing. Trim seam allowances, cut in (b). Fold up facing and iron seam allowances into facing, stitch neatly. ©. Fold in facings and iron. Sew back facing edges onto the zip bands; sew front facing edges onto the base seams of the inset.

#### Seam

Cut back seam to 1 cm (about .5 inch), de-baste and fold in and pin. Stitch lower edges allowing 0.5 cm (about .5 inch), stitching the seam.

---

**BurdaStyle**

Maddy