

4/2010 Cropped Blouse

By: burda style magazine

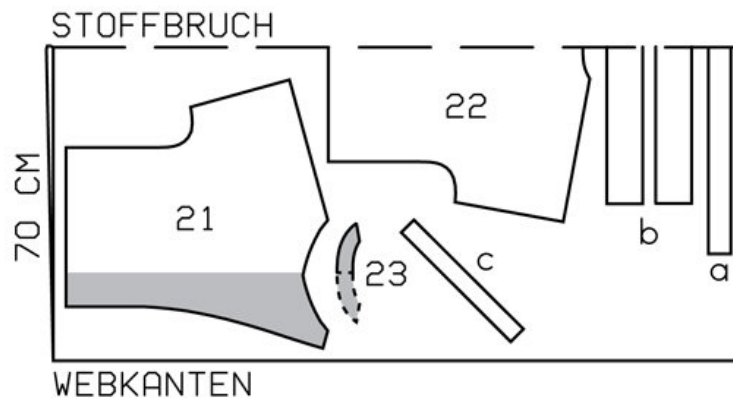
<http://www.burdastyle.com/projects/42010-cropped-blouse>

Cropped Blouse burda style magazine patterns FAQ

Materials

Batiste

Step 1 — Preparation



101 36-44

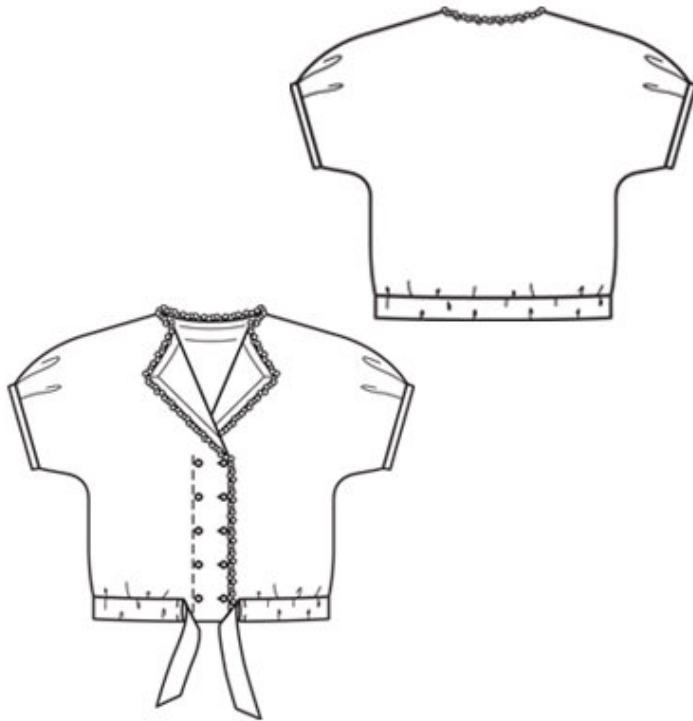
Trace the pattern pieces from the pattern sheet.

The pleats on pieces 21 and 22 are marked for size 36. Remark the pleat lines for the other sizes according to the size lines.

Seam and hem allowances:

Seams and edges 1.5 cm (5/8 in) (also on inside edge of facings).

Step 2 — Cutting Out



21 front with integrated sleeve 2x

22 back with integrated sleeve,
 on a fold 1x

23 back facing, on a fold 1x

a) drawstring casing, 88 — 92 — 96 — 100 — 104 cm (34³/₄ — 36¹/₄ — 37³/₄ — 39¹/₂ — 41 ins) long, 4.5 cm (17⁷/₈ ins) wide,

b) drawstring band, a total of 136 — 140 — 144 — 148 — 152 cm (53¹/₂ — 55¹/₄ — 56³/₄ — 58¹/₄ — 60 ins) long, 8 cm (3¹/₄ ins) wide, finished width 4 cm (1⁵/₈ ins),

c) 2 bias binding strip for lower edges of sleeves, 33 — 35 — 36 — 37 — 39 cm (13 — 13³/₄ — 14¹/₄ — 14¹/₂ — 15¹/₂ ins) long, 4 cm (1⁵/₈ ins) wide (incl. allowance).

Interfacing: See pattern layout.

Step 3 — Shoulder and sleeve seams

Stitch shoulder seams and top sleeve seams and stitch side seams and underneath side seams each as continuous seam. Trim seam allowances to 7 mm (1/4 in) wide, neaten together, and press onto back.

Step 4 — Sleeve pleats and binding strips

Fold pleats in lower edges of sleeves and baste next to marked seam line. Trim away allowances on lower edges of sleeves. Fold binding strips in half lengthwise and press, right side facing out. Unfold strips out flat again. Now turn each lengthwise edge of strips in to pressed crease and press again. Unfold pressed strips and stitch ends together to match edges of sleeves. Pin binding strips to edges of sleeves, from inside, and

stitch 1 cm (3/8 in) from edge, along the pressed fold. Fold binding out over edge, turn in, and baste in place. Edgestitch binding in place.

Step 5 — Casing strip

Turn in allowances on narrow edges of casing strip and stitch. Press allowance on upper lengthwise edge to inside. Work from inside to stitch casing strip to lower edge of blouse, with right side facing wrong side. Clip seam allowance on lower edge of blouse at ends of casing. Turn casing strip to outside and edgestitch upper edge in place.

Step 6 — Facings

Lay front self-facings outward and stitch to back facing. Stitch facing to neck and lower edges, right sides facing. Trim seam allowances. Turn facing to inside and sew to shoulder seams. Topstitch right front as marked.

Step 7 — Drawstring Band

Fold drawstring band lengthwise, right side facing in. Stitch edges together, leaving a section of seam open for turning. Turn band right side out. Sew opening closed. Pull band into casing.

Step 8 — Buttonholes

Work buttonholes in right front. Work top buttonhole in left front for inside button. Sew buttons in place to match buttonholes and as marked.

Step 9 — Tulle band

Fold tulle band in half and pin under front and neck edges so that sequins extend past edges. Make small folds in band at corners. End at lapel fold line on left front. Sew tulle band in place with small stitches, by hand, not exiting needle on right side of garment.

BurdaStyle

4/2010 Cropped Blouse