

burda style magazine 02/2010 Top

By: burda style magazine

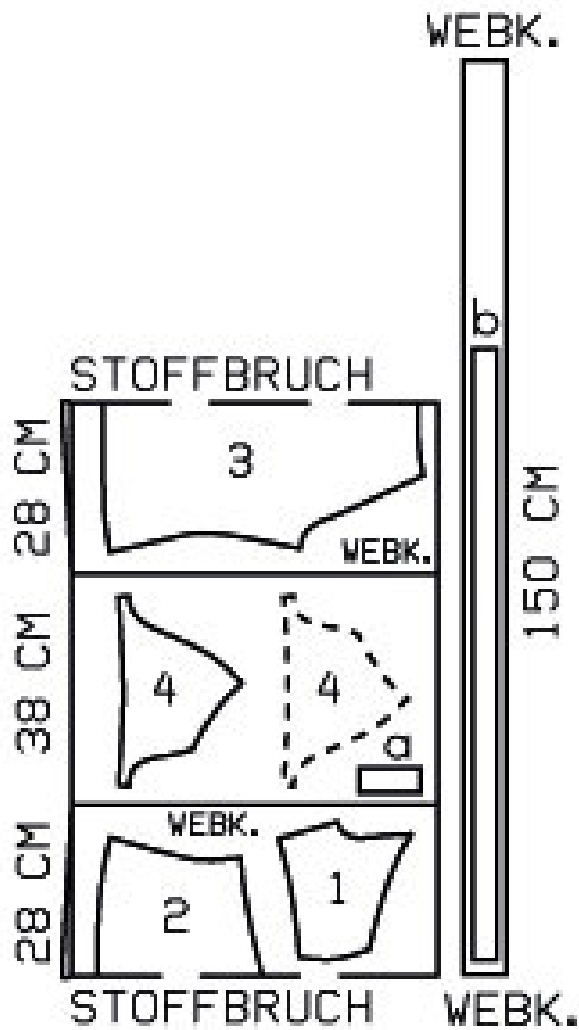
<http://www.burdastyle.com/projects/burda-style-magazine-022010-t>

Ruched front top. For more information on this and other burda style magazine patterns, please see this dedicated blog post.

Materials

Hoop-striped stretch jersey

Step 1 — Preparation



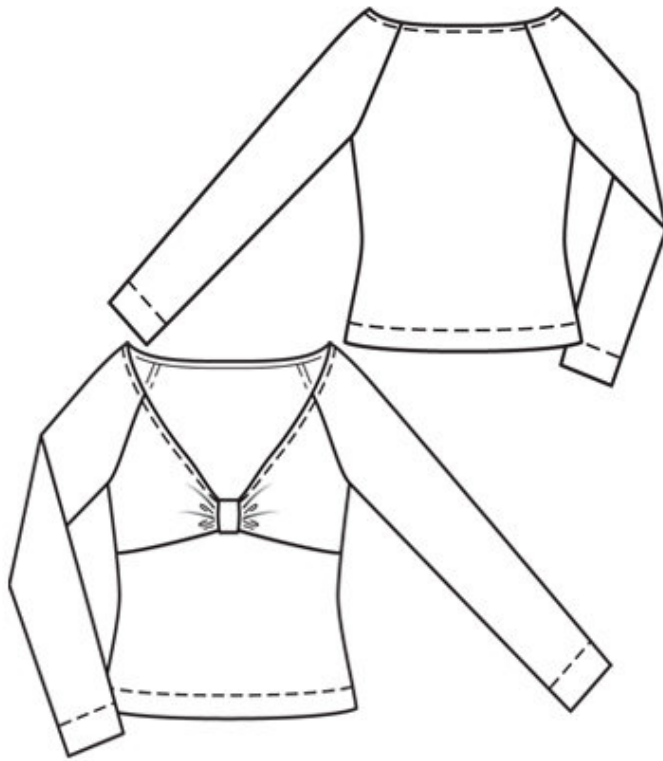
122 A 34-38

Trace the pattern pieces from the pattern sheet. Note different sleeve lengths for views A and B.

Seam and hem allowances:

Seams and edges 1.5 cm (5/8 in), hem 4 cm (15/8 ins), sleeve hems A 2 cm (3/4 in), B 5 cm (2 ins). Flare sleeve hem allowance.

Step 2 — Cutting Out



1 upper front 2x

2 lower front, on a fold 1x

3 back, on a fold 1x

4 sleeve 2x

a) front loop, 10 — 10 — 10 — 11 — 12 — 13 cm (51/4 ins) long, 4 cm (15/8 ins) wide,

b) facing strip for neckline, 94 — 97 — 100 — 102 — 104 — 107 cm (37 — 38 1/4 — 39 1/2 — 40 1/4 — 41 — 42 1/4 ins) long, 4 cm (15/8 ins) wide (incl. allowance).

Vilene Bias Tape: Iron onto neck edges.

Step 3 — Seams

Stitch a line of machine basting to each side of seam line to gather centre front seam edges of upper front pieces to 5 — 5 — 5 — 5.5 — 6 — 6.5 cm (2 — 2 — 2 — 2 1/4 — 2 3/8 — 2 5/8 ins). Stitch centre front seam. Spread seam allowances open and iron carefully over the edge of your ironing board, do not press gathers flat.

Step 4 — Loop Pieces

Press allowances at lengthwise edges of loop piece to inside. Gather ends of loop and the middle to a width of 3 cm (1 1/4 ins). Lay loop on upper front over centre front seam with wrong side facing right side. Baste across bottom end of loop.

Step 5 — Fronts and seam allowances

Stitch upper front to lower front. Press seam allowances up.

Step 6 — Side Seams and Sleeve Seams

Stitch side seams and sleeve seams. Stitch sleeves to edges of armholes. Press allowances of sleeve joining seams open to beginning of underarm curve.

Step 7 — Neckline

Face edge of neckline, see burda style magazine 02/2010 Long Sleeve Top #112 A. Topstitch 5 mm (3/16 in) next to edge of neckline.

Step 8 — Loop and Neckline

Lay loop around edge of neckline to inside and sew end on at horizontal seam.

Step 9 — Hem Allowances

Press hem allowance to inside and stitch from right side with the twin needle 3 cm (1 1/4 ins) wide. Press sleeve hem allowances to inside. Stitch sleeve hems with the twin machine needle.

BurdaStyle

burda style magazine 02/2010 Top