

Maryy

By: burdastyle

<http://www.burdastyle.com/projects/maryy>



This easy to sew sun dress features Maryy's hot hot heat dress as a pattern. We added straps to the pattern to make the dress more wearable for those who need support, though you can also make it strapless. Just make sure to use an elastic band around the top or to make it tight enough :)

Materials

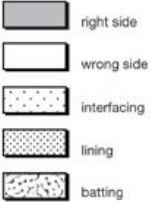
Cotton for self, lace to create the print on the self, invisible zipper and two buttons.


Step 1

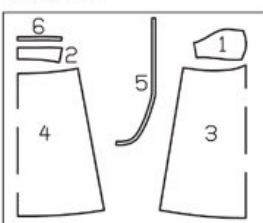
burda Download-Pattern 6042 - Instructions

●●□□ easy fitted

burda sizes		55 ins / 140 cm							
Dress		32	34	36	38	40	42	44	46
yds		1 1/4	1 1/4	1 1/4	1 1/4	1 1/4	1 1/4	1 1/4	1 1/4
m		1.40	1.40	1.55	1.55	1.55	1.55	1.55	1.55
→ with nap		→	→	→	→	→	→	→	→







Interfacing 90 cm x 35 cm
 2x nahtverdeckt: 40 cm
 Baumwollstoffe

PATTERN

- 1 Front piece 4x
- 2 Back piece 2x
- 3 Front skirt panel 1x
- 4 Back skirt panel 1x
- 5 Shoulder straps 4x
- 6 Back placket 2x

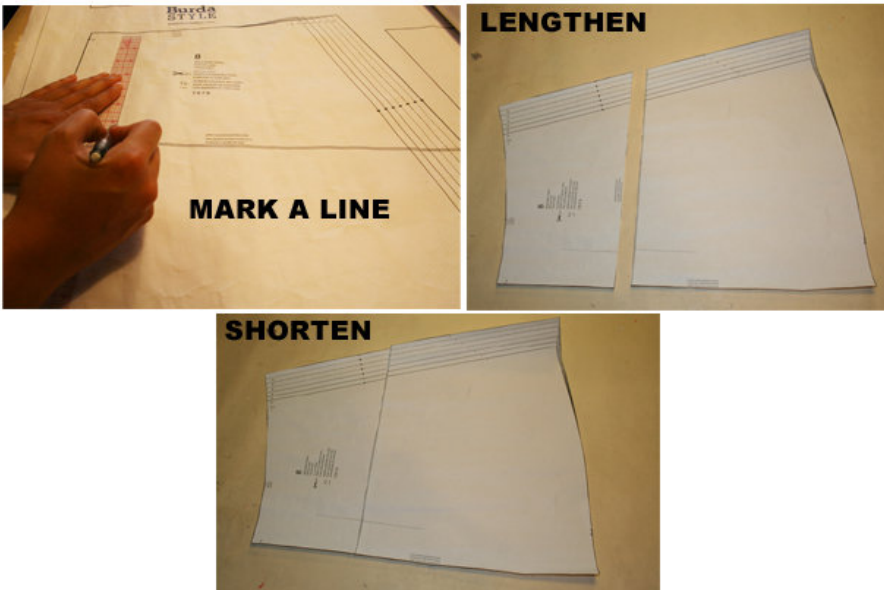
Fabrics: cotton fabrics

Step 2



The patterns can be printed out at the copy shop. If you decide to print them at home, follow the instructions: Paper cut for ANSI A (German DIN A4) prints: The patterns are printed out on 24 sheets with a thin frame. Wait until all sheets are printed out. Arrange the sheets so that they fit together (see additional page with the overview of the prints). Fold the single sheets on the upper and right edge along the thin frame lines. Begin with the left lower sheet and then tape the frame lines together precisely.

Step 3



ADJUST PATTERN SIZES

Select your size according to the Burda-dimension table: dresses, blouses, jackets and coats according to the bust size, trousers and skirts according to the hip width. Change the pattern to fit your measurements if they deviate from the Burda-size chart. Cut out the pattern pieces 1 to 6 according to your size. Refer to our 'Adjust patterns for mixed sizes' technique

LENGTHENING OR SHORTENING THE PATTERN PIECES

Our pattern is calculated for a height of 5â€™ 6â€™ (168 cm). If you are taller or shorter, you can adjust the pattern pieces along the lines marked “lengthen or shorten here”. This way the proper fit is maintained. Always adjust all pattern pieces along the same line to the same degree.

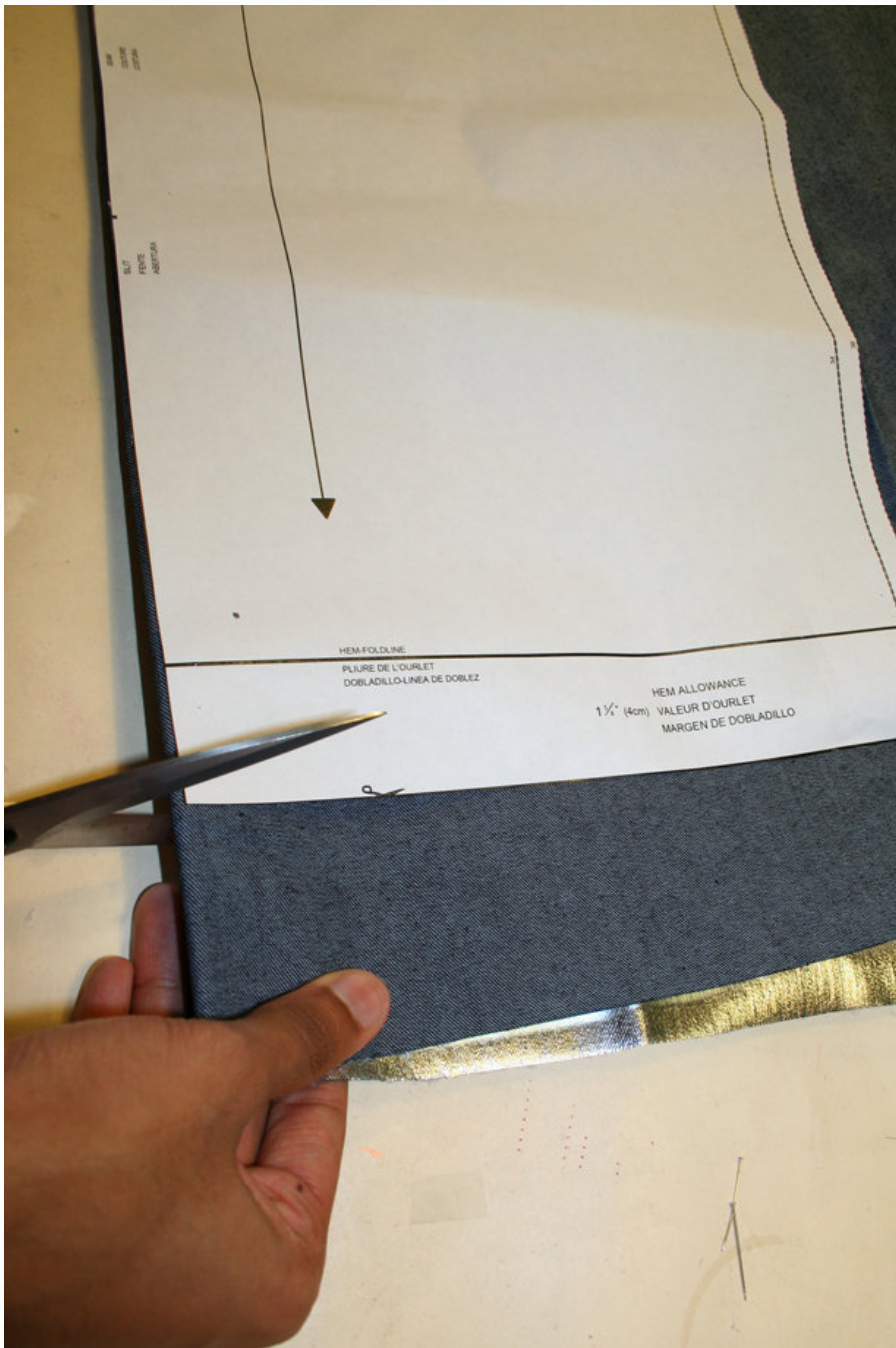
How to lengthen and shorten pattern pieces:

Cut the pattern pieces along the marked lines

To lengthen, slide the two halves of the pattern piece as far apart as necessary.

To shorten, overlap the two halves of the pattern piece as far as necessary. Blend the side edges.

Step 4



CUTTING OUT

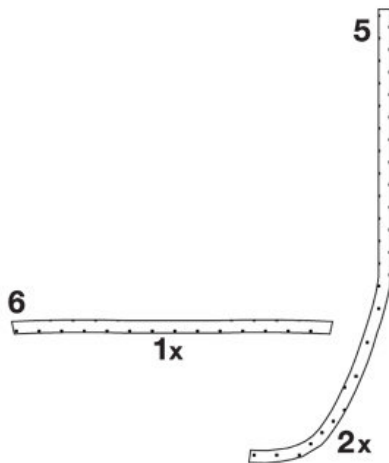
FOLD () means: Cut on the fold, the fold being the center of the pattern piece, but never a cut edge or seam. The piece should be cut double, with the fold line forming the center line. Pattern pieces that are outlined with a broken line in the cutting diagrams are to be placed face down on the fabric. The cutting diagrams on the pattern sheet show how the pattern pieces should be placed on the fabric.

The cutting diagrams show the placement of the pattern on the fabric.

For a single layer of fabric, the pattern pieces are pinned to the right side. For double layers of fabric, the right sides are facing and the pattern pieces are pinned to the wrong side. The pattern pieces that are shown extending over the fold of the fabric in the cutting diagram should be cut last from a single layer of fabric.

Step 5

INTERFACING



SEAM AND HEMLINE ALLOWANCES are included on an average:

1 5/8" (4 cm) for hem, 5/8" (1.5 cm) for all edges and stitches. Using BURDA copying paper, transfer the lines and signs of the pattern onto the wrong side of the fabric. Instructions can be found in the packaging.

Sewing

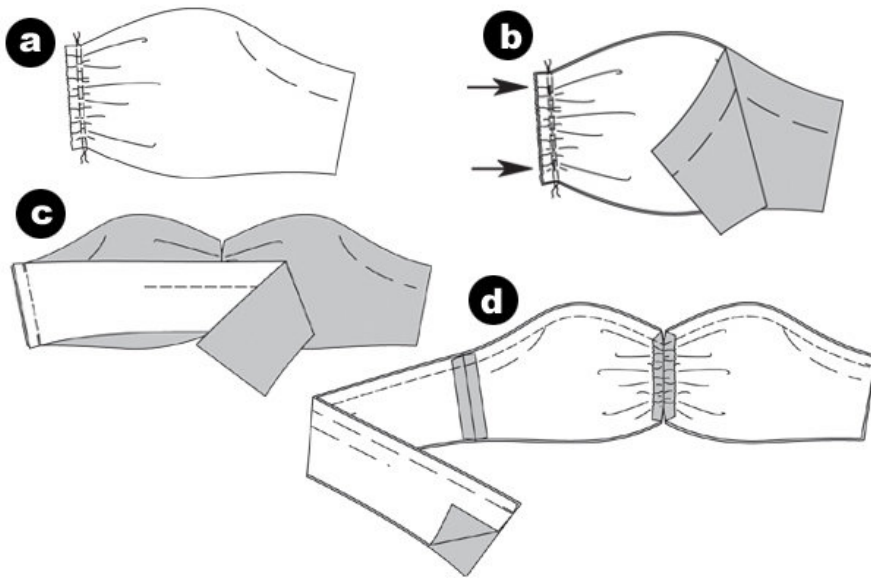
While sewing, the right sides of the fabric are facing.

Transfer all lines of the pattern onto the right side of the fabric using basting stitches.

INTERFACING

Cut the interfacing according to the cutting diagram and press onto the wrong fabric side.

Step 6



Top piece

Gather front piece

To gather the front edge of the front piece double stitch using basting stitches. Tighten the bobbin threads to 3â€² (7 cm) width. Knot threads. Distribute the width equally. (a)

FRONT CENTER SEAM

Position the front pieces together, right sides facing. Stitch the center seam using a narrow stitch adjustment. Stitch over the gathers. Do not stitch over the allowances at top and bottom (arrows). Secure seam ends. Press allowances apart. Open the basting stitches. DO that for both pairs of front pieces. (b)

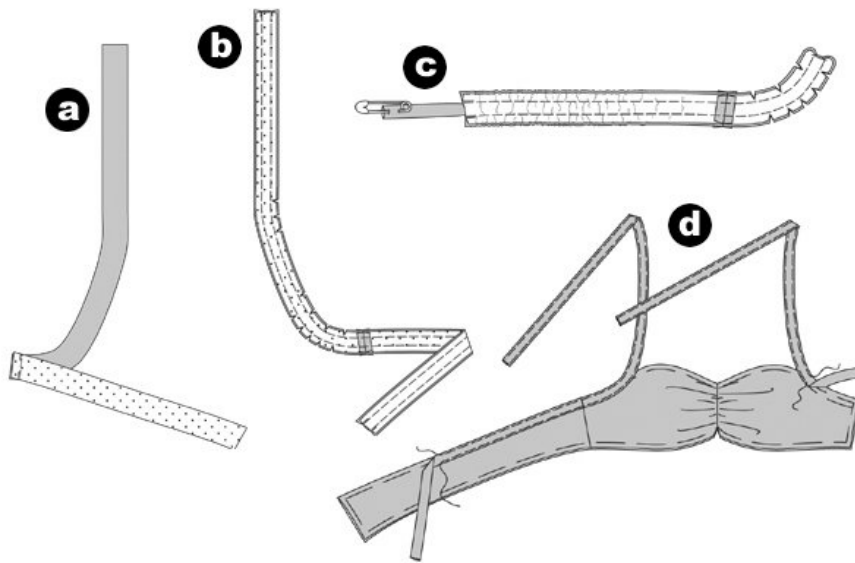
RIGHT SIDE SEAM

Position the front and back piece together, right sides facing. Stitch the right side seam (seam number 1). Stitch the right side seam of the inner front and back piece as an mirror image to the dress seam. Press allowances apart. ©

DOUBLE TOP PIECE

Position the top pieces together, the side seams meeting. Pin the top edges together and stitch. Trim allowances. Turn top piece. Pin open edges and press. On the right side of the fabric, stitch along the center front seam. (d)

Step 7



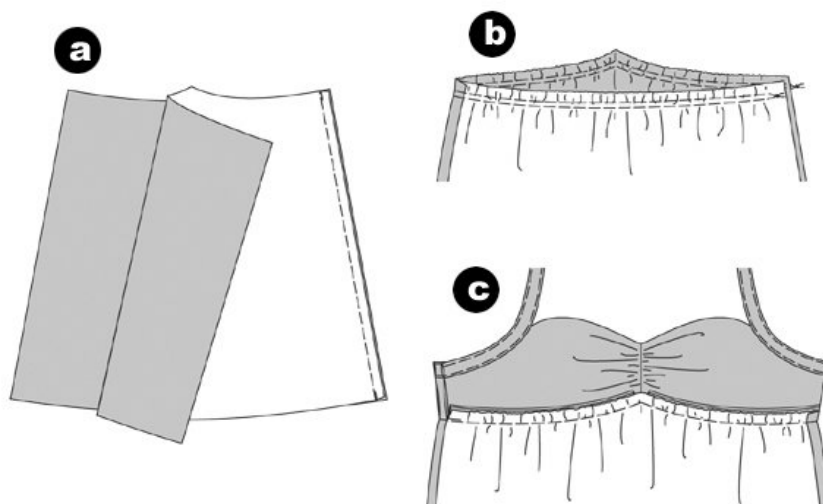
PLACKET / SHOULDER STRAPS

Position the interfaced placket and interfaced right shoulder strap together, right sides facing. Stitch right side seam (seam number 2). Stitch the side seam of the non-interfaced pieces as an mirror image. Press allowances apart. (a)

Position the interfaced and non-interfaced piece for the right shoulder strap together, right sides facing. Pin the long edges together and stitch. Trim allowances and snip in. (b) Turn the piece using a safety pin ©. Pin the edges and press. Stitch the pieces for the left shoulder strap accordingly. Turn strap, pin edges and press.

Pin the placket with shoulder strap on the top piece. It meets the seam line. The right side seams meet. The shoulder straps overlap the top piece. Topstitch the placket narrowly on both sides. Topstitch the shoulder straps narrowly; then neaten the open strap ends. (d)

Step 8



SKIRT / RIGHT SIDE SEAM

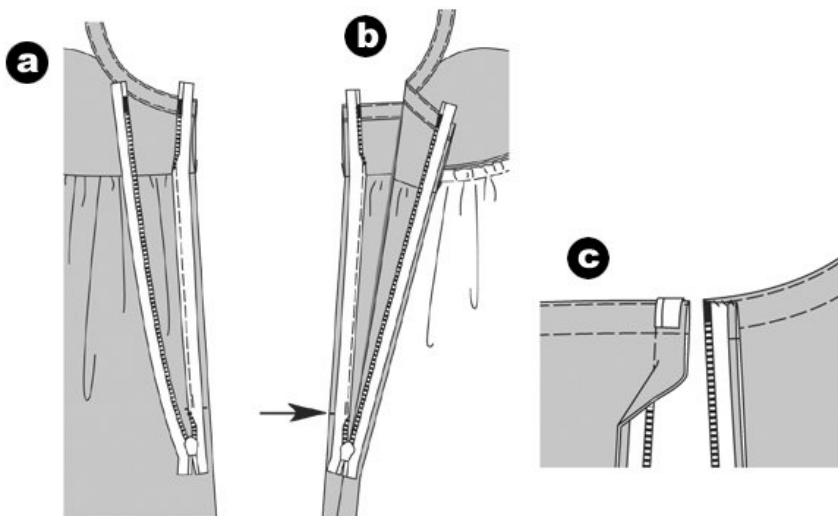
Position the front and back skirt panel together, right sides facing. Pin the right side seam (seam number 3) and stitch. Neaten allowances and press apart. (a)

TOPSTITCH TOP PIECE

Gather the top skirt edge double stitch it using basting stitches. Tighten the bobbin threads to the width of the top piece. Knot thread ends. Distribute the width equally. (b)

Position the top piece on the top skirt edge (seam number 4), right sides facing and centers meeting. The right side seams meet. Topstitch the top piece narrowly, but leave an opening at the center front. Trim allowances, neaten and press inside the top piece. (c)

Step 9

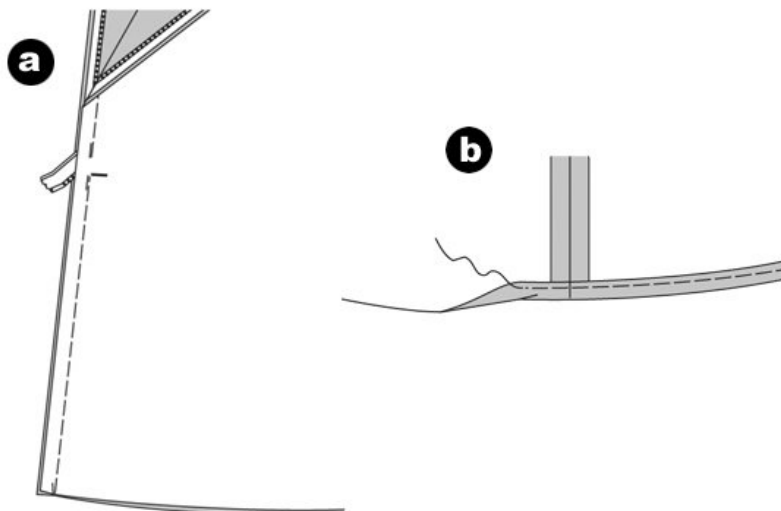


ZIPPER (hidden)

The zipper will be applied in a way that the seam edges cover it up. The zipper should be slightly longer than the opening. It will be applied before stitching the side seam below the zipper. Stitch the zipper using your sewing machine's zipper foot. Neaten the side edges.

Open the zipper and pin it with its right side onto the allowance of the opening edge. The little zipper teeth are positioned on the marked opening edges. Then stitch the zipper using the zipper foot, closely along the zipper teeth line (a). Do the same with the other side of the zipper (b). Stitch both sides from the top to the opening sign (arrow). Since the little teeth have the tendency to roll up the zipper foot keeps them flat. Close the zipper. Turn the strip ends over the allowances. Turn the allowances inside and sew by hand ©.

Step 10



LEFT SIDE SEAM

Position the front and back piece together. Stitch the side seam from the bottom to the opening sign. Pull the zipper slightly. Secure seam ends. Press allowances apart. (a)

Neaten the bottom edge. Turn the edge inside and press. Topstitch the hemline now 1 cm wide. (b)
 Work two button holes into the back placket; 3 cm to 4 cm (8 to 11 cm) next to the center back. Accordingly, apply the buttons onto the shoulder strap ends. Try the dress on and adjust the shoulder strap length as needed. Button the shoulder straps.

BurdaStyle

Maryy