

# 01/2012 Leather bustier

By: burda style magazine

<http://www.burdastyle.com/projects/012012-leather-bustier>

---



Leather bustier. Note: This is the same pattern as Satin bustier #123 burda style magazine patterns FAQ

## Materials

Stretch suede

---

## Step 1 — Preparation



Paper cut for ANSI A (German DIN A4) prints:

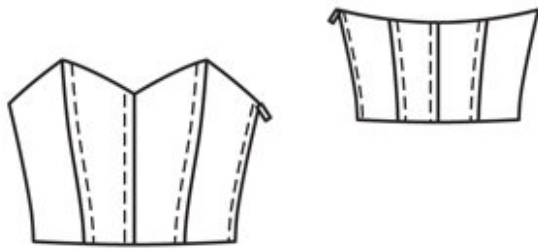
This pattern is printed on 8.5 × 11 sheets of plain paper. Do not scale or center pages before printing. Wait until all sheets are printed out before beginning to tape them together. **Do not cut out pattern pieces yet—** Arrange the sheets on a large, hard, flat surface so that they fit together, matching up like numbers and letters (i.e. 6A to 6A). To tape pattern together, fold under the margin of one piece (6A) and tape right against the line of it's matching number/letter (6A).

**burda style magazine pattern do not have seam allowance included.**

Seam and hem allowances to be added: Seams and edges 1.5 cm (5/8 in).

---

## Step 2 — Cutting out



Leather:

1 centre front 2x

2 side front 2x

3 centre back 2x

4 side back 2x

Lining: pieces 1 to 4.

Vilene Bias Tape/ stay tape: Iron to upper edges of lining pieces.

---

### Step 3 — Center back seam

Stitch centre front and centre back seams. Press seam allowances to one side. Topstitch 1 cm (3/8 in) from seams. Stitch front and back section seams. Press allowances onto centre pieces. Topstitch centre pieces along seams. Stitch right side seam. Press seam open.

---

### Step 4 — Zip

Press allowances on side edges of garment to inside. Stitch zip under edges so that zip teeth are covered.

---

### Step 5 — Hem

Press hem allowance to inside, then unfold again.

---

## Step 6 — Lining

Stitch seams of lining. Cut boning tape to 16 cm (63/8 ins) long each for centre back seam and back section seams each and to 24 — 24.5 — 25 — 25.5 — 26 cm (91/2 — 93/8 — 97/8 — 10 — 101/4 ins) long each for front section seams. Round off ends slightly. Lay boning tape on inside of lining, on centre back seam and on section seams — upper ends lie approx. 3 mm (1/8 in) below marked upper edge. Stitch boning tape in place.

---

## Step 7 — Lining

Lay lining right sides together with garment. Stitch to upper edge. Trim allowances and clip at centre front. Turn lining up and stitch to allowances, close to seam — stitching as far as possible at top points of neck edge. Lay lining right sides together with garment again and stitch to hem allowance. Turn bustier right side out. Turn hem allowance to inside and glue (textile adhesive). Lay extra length of lining down. Press lightly. Turn in lining edges and sew to zip tapes.

---

**BurdaStyle**

01/2012 Leather bustier