

# 10/2011 Cape

By: burda style magazine

<http://www.burdastyle.com/projects/102011-cape>

---



Cape burda style magazine patterns FAQ

## Materials

Knit fabric, jersey

---

## Step 1 — Preparation



Paper cut for ANSI A (German DIN A4) prints:

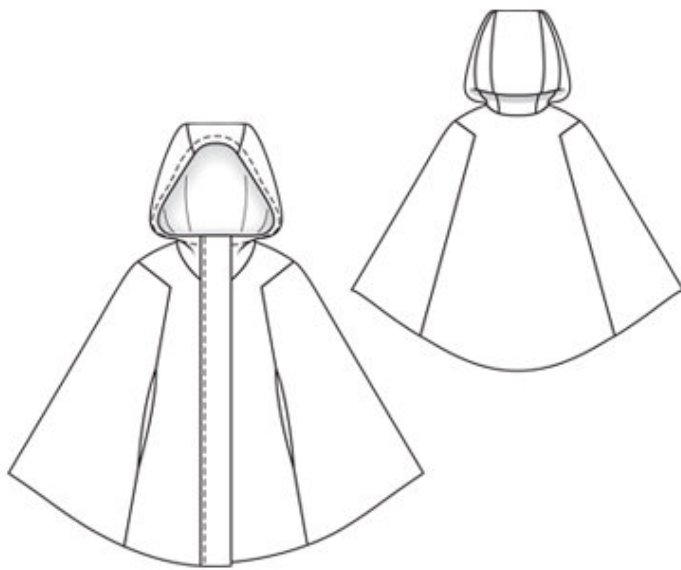
This pattern is printed on 8.5 × 11 sheets of plain paper. Do not scale or center pages before printing. Wait until all sheets are printed out before beginning to tape them together. **Do not cut out pattern pieces yet**— Arrange the sheets on a large, hard, flat surface so that they fit together, matching up like numbers and letters (i.e. 6A to 6A). To tape pattern together, fold under the margin of one piece (6A) and tape right against the line of it's matching number/letter (6A).

**burda style magazine pattern do not have seam allowance included.**

Seam and hem allowances to be added: Seams and edges 1.5 cm (5/8 in).

---

## Step 2 — Cutting out



**Knit fabric:**

1centre front 2x

2side front 2x

3centre back, on a fold 1x

4side back 2x

5front hood piece 2x

6centre hood piece, on a fold 1x

7side hood piece 2x

8front neck facing 2x

9back neck facing, on a fold 1x

a) fastening band, 85 — 86 — 87 — 88 — 89 cm (33 1/2 — 34 — 34 1/4 — 34 3/4 — 35 ins) long, 13 cm (5 1/4 ins) wide, finished width 6.5 cm (2 5/8 ins).

**Imitation leather:**

1front facing 2x

Jersey (lining): pieces 5, 6, and 7.

**Interfacing:** See pattern layout. Iron interfacing to inside half of band. On front pieces, interface allowances of arm opening edges. Also iron small pieces of interfacing to wrong side of centre fronts and centre back, over corners of seams.

### Step 3 — Center back seam

Stitch the centre back to the side back pieces, clipping seam allowances of centre back into corners. Stitch the centre fronts to the side fronts in same manner, leaving openings for arms between slit marks. Press seam allowances open and press edges of openings. Sew allowances at edges of openings in place by hand.

---

## Step 4 — Side seams

Stitch side seams (seam number 3).

---

## Step 5 — Hem allowance

Press hem allowance to inside and sew in place by hand.

---

## Step 6 — Hood

Stitch the front hood pieces to the side hood pieces (seam number 4). Stitch the side hood pieces to the centre hood piece. Press the seam allowances open. Stitch the hood to neck edge.

---

## Step 7 — Zip

Open the zip. Turn in top ends of zip tapes. Lay halves of zip face down on the front edges of the fronts and hood (on right side of fabric) so that teeth of zip lie on garment piece, next to seam line, and zip tapes lie on the seam allowances. Stitch zip tapes in place along marked front edges.

---

## Step 8 — Shoulders

Stitch the shoulder seams of the neck facing. Stitch the front facings to the neck facing. Press the seam allowances open. Clip seam allowance of front facing at bottom end of seam.

---

## Step 9 — Hood lining and facing

Stitch the seams of the hood lining. Stitch the hood lining to neck edge of facing. Pin the front facings right sides together with the front edges and pin the edges of the hood together. Stitch along the front edges, exactly along line of zip joining seam, and along edge of hood. Trim the seam allowances, trimming the corners diagonally. Turn the facing to inside and turn the hood right side out. Press the edges. Turn in lower facing edges and sew to hem edge. Pin the hood joining seams together exactly. Turn the facing up again and stitch the seam allowances together, as far as possible, close to the hood joining seam. Turn the facing down again. Sew inside edge of facing in place by hand. Stitch inside edge of front facing in place. Topstitch 3 cm (1 1/4 ins) from edge of hood.

---

## Step 10 — Band

Fold fastening band in half lengthwise and press, wrong side facing in. Unfold band again. For the concealed fastening, attach top halves of snap fasteners to inside half of band, 1.5 cm (5/8 in) from pressed crease, spaced 2.5 cm and 16 cm (1 in and 6 3/8 ins) from top end and 2.5 cm and 35 cm (1 in and 13 3/4 ins) from bottom end, so that top of each snap lies on inside of band. Fold band in half lengthwise, right side facing in. Stitch across ends. Turn band right side out. Stitch edges of band together to right front, along joining line. Trim seam allowances of joining seam to 5 mm (3/16 in) wide. Press band forward over joining seam. Topstitch 7 mm (1/4 in) from seam. Close zip. Attach bottom halves of snaps to left side of fastening, to match top halves.

---

**BurdaStyle**

10/2011 Cape