

# Embroidered Blouse 05/2012

By: burda style magazine

<http://www.burdastyle.com/projects/embroidered-blouse-052012>

---



Blouse sewing pattern. This is a wonderful classic short sleeve blouse with a button placket down the center back. Our version is made from Madeira broderie anglaise fabric that we dyed ourselves with textile dye.

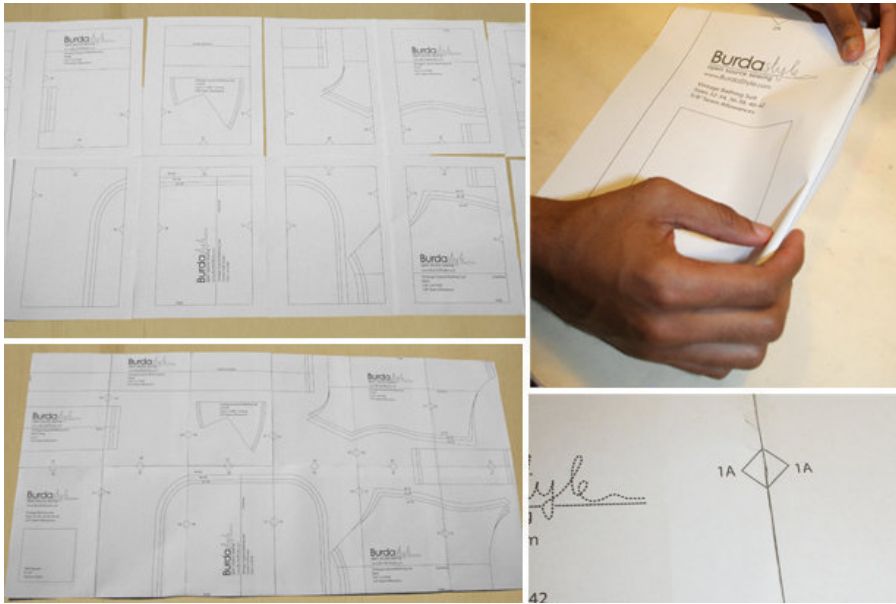
## Materials

Madiera broderie anglaise, 150 cm (59 ins) wide, embroidered area width: 138 cm (54 1/2 ins) length: 0.85 0.85 0.85 0.90 0.90 m (1 yd). Bias tape, width: 4 cm (1 5/8 ins) length: 0.50 0.50 0.50 0.55 0.55 m (20 20 20

22 22 ins). 6 buttons.

---

## Step 1 — Preparations



### Preparation:

This pattern is printed on 8.5 × 11 sheets of plain paper. Do not scale or center pages before printing. Wait until all sheets are printed out before beginning to tape them together. **Do not cut out pattern pieces yet**— Arrange the sheets on a large, hard, flat surface so that they fit together, matching up like numbers and letters (i.e. 6A to 6A). To tape pattern together, fold under the margin of one piece (6A) and tape right against the line of it's matching number/letter (6A).

Trace the pattern pieces from the pattern sheet following the lines and markings for the correct size.

The buttonholes on piece 22 are marked for size 36. For sizes 38 – 44, mark the top buttonhole the same distance from neck edge as for size 36. The bottom buttonhole is the same for all sizes. Space the other buttonholes evenly in between.

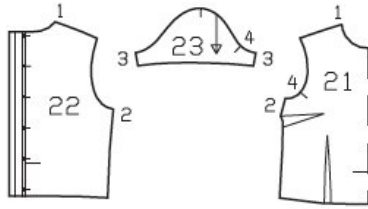
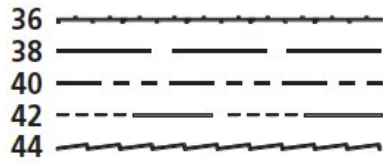
### **burda style magazine pattern do not have seam allowance included.**

Seam and hem allowances to be added: Seams and edges 1.5 cm (5/8 in), hem and sleeve hems 3 cm (1 1/4 ins), no allowance on vertical edge of back self-facing.

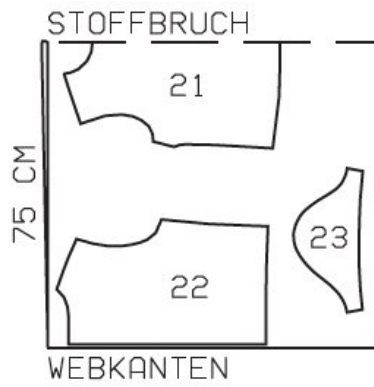
---

## Step 2 — Cutting out

Pattern pieces 21 to 23



Fabric width 150 cm.

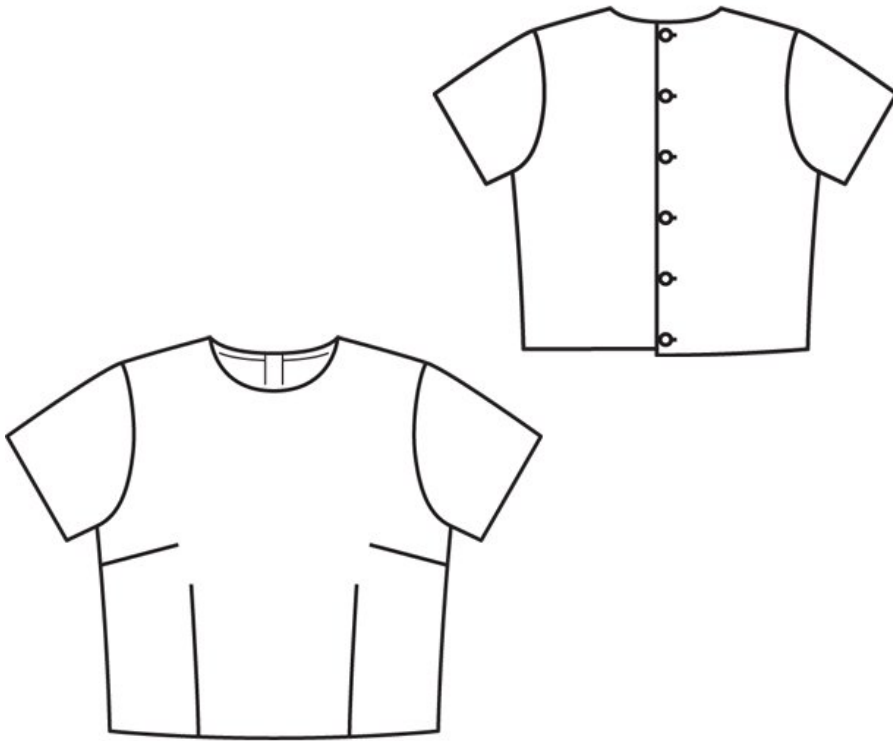


Stoffbruch = fabric fold  
Webkanten = selvage

- 21 front, on a fold 1x
- 22 back 2x
- 23 sleeve 2x

---

## Step 3 — Sewing



Stitch front darts. Press bust darts up and press vertical darts to centre.

Stitch the side seams and shoulder seams right sides together. Press the seam allowances open.

Fold self-facings on centre back pieces to inside on fold line and press. Turn folded facings to outside and pin to neck edge. Fold bias tape in half lengthwise and press. Work from outer side to stitch folded bias tape to neck edge so that fold edge of tape lies on garment piece, 1 cm (3/8 in) past seam line. Trim seam allowances. Turn bias tape to inside. Turn facings to inside and press edges. Sew inside edge of bias tape in place by hand.

At hem edge, unfold back facings. Press hem allowance up to the inside, turn edge under to half width, and sew in place by hand.

Turn facings to inside again and sew to hem allowance.

Stitch sleeve seams right sides together. Turn hem allowances to inside, turn edges under, and sew in place by hand. Set in sleeves matching underarm points and top sleeve to bodice shoulder seam.

Refer to your sewing machine manual for the correct procedure on how to install buttonholes. Stitch buttonholes in fabric marked along the centre back. Sew on buttons to match up with buttonholes opposite side of centre back.

---

**BurdaStyle**

Embroidered Blouse 05/2012