

09/2011 Asymmetrical Jacket

By: burda style magazine

<http://www.burdastyle.com/projects/092011-asymmetrical-jacket>



Asymmetrical Jacket burda style magazine patterns FAQ

Materials

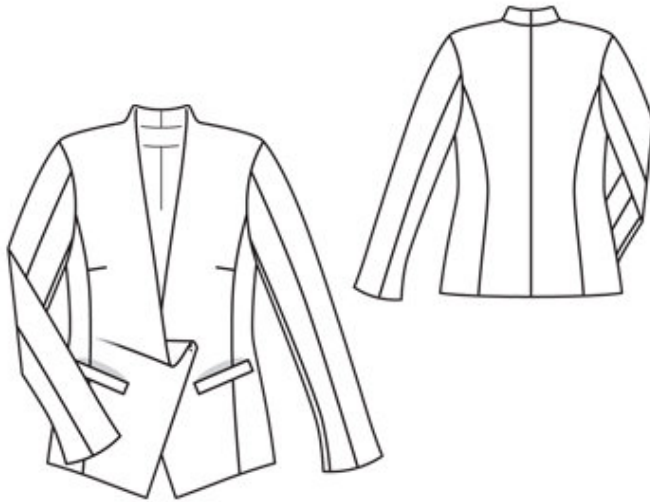
Crpe fabric with crosswise stretch

Step 1 — Preparation



“Paper cut for ANSI A (German DIN A4) prints:”
“This pattern is printed on 8.5 × 11 sheets of plain paper. Do not scale or center pages before printing. Wait until all sheets are printed out before beginning to tape them together. **Do not cut out pattern pieces yet**— Arrange the sheets on a large, hard, flat surface so that they fit together, matching up like numbers and letters (i.e. 6A to 6A). To tape pattern together, fold under the margin of one piece (6A) and tape right against the line of it’s matching number/letter (6A).
“burda style magazine pattern do not have seam allowance included.”
“Seam and hem allowances to be added: Seams and edges 1.5 cm (5/8 in).”
“see example here: [HYPERLINK](http://www.burdastyle.com/projects/072011-jumpsuit/instructions/1”) <http://www.burdastyle.com/projects/072011-jumpsuit/instructions/1”> \t “_blank”
<http://www.burdastyle.com/projects/072011-jumpsuit/instructions/1>

Step 2 — Cutting out



Crpe:

- 21right centre front with
â€”integrated collar 1x
- 22left centre front with
â€”integrated collar 1x
- â€”â€”left front facing 1x
- 23side front 2x
- 24centre back 2x
- 25side back 2x
- 26upper sleeve, cut apart, each 2x
- 27under sleeve 2x
- 28sleeve facing 2x
- 29back facing, on a fold 1x
- 31welt 2x
- 32pocket piece 2x

Lining: piece 21 as listed under $\hat{\text{A}}\text{--}\hat{\text{a}}\text{“}$ Preparation $\hat{\text{a}}\text{“}$; piece 22 minus width of facing and opposite of front;
 $\hat{\text{A}}\text{--}$ piece 24 minus width of facing and with an ease pleat of approx. 2 cm (3/4 in) at centre back; pieces 23,
 25, 26 and 27; piece 32 up to lining line.

Interfacing: See pattern layout. Also interface the hem allowances of the jacket.

Step 3 — Bust darts

Stitch bust darts. Press darts down. Stitch side fronts to centre fronts, clipping seam allowance of right centre front at waist level. Press seam allowances open.

Step 4 — Welted pockets

Sew welted pockets on fronts: Fold welt strips lengthwise, right side facing out, and press. Use basting thread or vanishing chalk to mark an abutting line on the right fabric side, 2.5 cm (1 in) from welt joining line (= finished width of welt) . Pin welts to fronts so that fold edges meet abutting lines. Stitch welts in place along joining line. Stitch pocket pieces of outer fabric along respective joining lines, with right sides facing. Slash between lines of stitching and clip diagonally toward each last stitch. Do not cut pocket pieces. Pull pocket pieces to inside. Press welts into pocket openings. Long edge of each welt meets pocket joining seam. Stitch pocket lining pieces to seam allowances of welt joining seams. Press pocket pieces down. Fold small triangles at pocket opening ends to inside side and stitch to welts, from seam end to seam end. Stitch pocket pieces together.

Step 5 — Shoulders

Stitch centre back seam, back section seams, and side seams. Stitch shoulder seams exactly from corners. Clip allowance of fronts into corners. Press the seam allowances open.

Step 6 — Collar

Pin left front facing right sides together with left front and collar. Stitch along hem edge, front edge, and edge of collar. Turn facing of collar up. Press seam allowances on upper edge of collar open, approx. 10 cm (4 ins) long.

Step 7 — Collar

Stitch centre back seam of collar. Press seam allowances open. Stitch collar to back neck edge, from corner to corner. Press seam allowances open.

Step 8 — Facing

Fold right front up at waist level. Stitch lower self-facing to upper facing. Clip seam allowance into corner. Stitch lower facing edge right sides together with hem edge.

Step 9 — Facings

Stitch back facing to front facings (shoulder edges) and collar, clipping seam allowances into corners. Press seam allowances open. Turn facings to inside. Pin back collar joining seams together. Work from inside to stitch seam allowances together, close to joining seam, from shoulder seam to shoulder seam.

Step 10 — Sleeves

Stitch section seams of the upper sleeves. Stitch the back sleeve seams. Press the seam allowances open. Stitch sleeve facings right sides together with lower sleeve edges. Turn facings down and stitch to seam allowances, close to seam. Stitch underneath sleeve \hat{A} -seams and facing seams as continuous seam. Turn facings to inside and sew to inside edges by hand.

Step 11 — Sleeve caps

Set in sleeves, easing sleeve caps. Sew shoulder pads in place.

Step 12 — Sew lining

On centre back lining pieces, stitch allowances of centre seam together, 1 cm (3/8 in) from edge. For the ease pleat, stitch along centre back, approx. 5 cm long, at upper and lower edges, and baste in between. Press pleat to one side. Stitch darts and seams of lining. Set in sleeve linings.

Step 13 — Line jacket

Stitch lining to inside edge of facing, leaving approx. 8 cm (3 1/4 ins) open at bottom. Lay lining inside jacket with wrong sides facing, pulling linings into sleeves. Above jacket hem, pin a fold, approx. 1 cm (3/8 in) deep, in lining. Turn in lining and sew to hem allowance by hand. Lay extra length of lining down and press. In front, sew open edge of lining in place. Turn in sleeve linings and sew to inside edges of facing. Lay extra length of lining down and press.

Step 14 — Snaps

Cover snap fasteners pieces with lining fabric. Sew top halves of snaps on inside of right front, 2 cm and 15 cm (3/4 in and 6 ins) from front corner (waist level), taking even stitches and exiting needle on right side of fabric. Pin right front to left front, matching centre fronts and matching waist lines. Mark positions of bottom snap halves on left front. Sew bottom snap halves in place as marked.

BurdaStyle

09/2011 Asymmetrical Jacket