

# The Karen Cardigan

By: burdastyle

<http://www.burdastyle.com/projects/the-karen-cardigan>

---



Perfect for Autumn days we've created a cardigan with a flowing, extended lapel which will cascade over your favorite Fall pieces. This cardigan has 2 button holes at the side seams to lead a belt through for cinching the waist or to create a variety of interesting silhouettes. You can make this piece from slightly

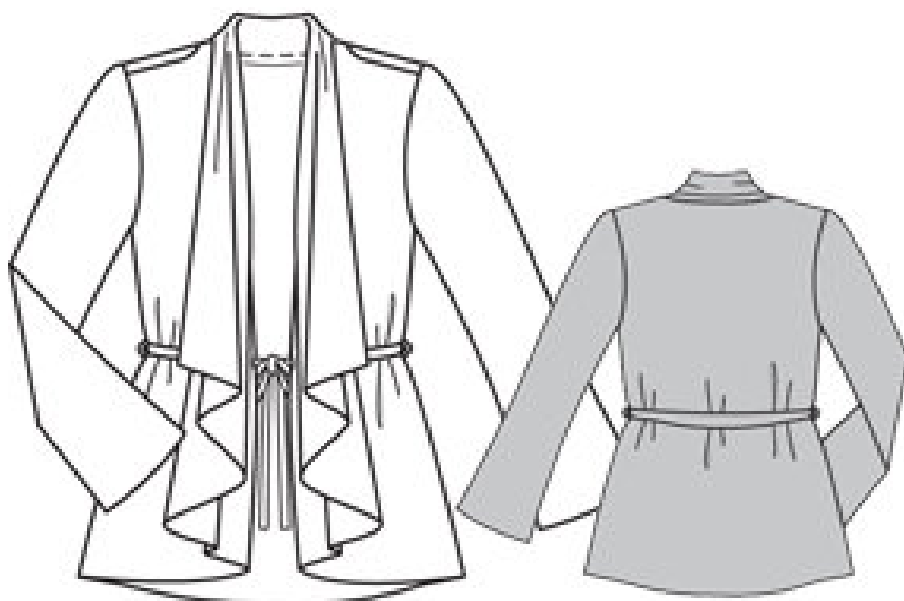
slouchy knits like cashmere, wool or a cotton/rayon blend.

## Materials

Knits, Wool, Jersey, Cashmere

---

## Step 1 — PATTERN



Sizes 2 to 14 (EU 34 to 46)

1 Front piece 2x

2 Back piece 1x

3 Sleeve 2x

4 Tie belt 2x

5 Loops 1x

Sizes 16 to 28 (EU 48 to 60)

6 Front piece 2x

7 Back piece 1x

8 Sleeve 2x

9 Tie belt 2x

10 Loops 1x

Fabrics: Jersey fabric, knit fabric

The patterns can be printed out at the copy shop. If you decide to print them at home, follow the instructions: Paper cut for ANSI A (German DIN A4) prints:

The patterns are printed out on 35 sheets (sizes 2 to 14 / EU 34 to 46); and on 42 sheets (sizes 16 to 28 / EU 48 to 60), with a thin frame. Wait until all sheets are printed out. Arrange the sheets so that they fit together (see additional page with the overview of the prints). Fold the single sheets on the upper and right edge along the thin frame lines. Begin with the left lower sheet and then tape the frame lines together precisely.

---

## Step 2 — ADJUST PATTERN SIZES



### ADJUST PATTERN SIZES

Select your size according to the Burda-dimension table: dresses, blouses, jackets and coats according to the bust size, trousers and skirts according to the hip width. Change the pattern to fit your measurements if they deviate from the Burda-size chart. Cut out the pattern pieces according to your size.

Sizes 2 to 14 (EU 34 to 46): Pattern pieces 1 to 5.

Sizes 16 to 28 (EU 48 to 60): Pattern pieces 6 to 10.

The seam numbers before the slash (/) refer to sizes 1 to 14, the seam numbers after the slash refer to sizes 16 to 28.

Refer to our 'Adjust patterns for mixed sizes' technique.

### LENGTHENING OR SHORTENING THE PATTERN PIECES

Our pattern is calculated for a height of 5' 6" (168 cm). If you are taller or shorter, you can adjust the pattern pieces along the lines marked "lengthen or shorten here". This way the proper fit is maintained. Always adjust all pattern pieces along the same line to the same degree.

How to lengthen and shorten pattern pieces:

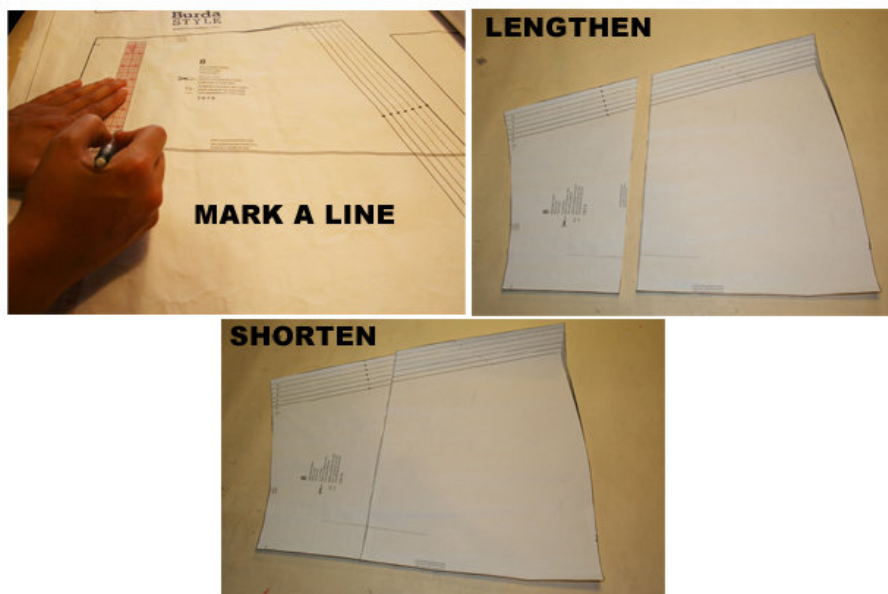
Cut the pattern pieces along the marked lines

To lengthen, slide the two halves of the pattern piece as far apart as necessary.

To shorten, overlap the two halves of the pattern piece as far as necessary. Blend the side edges.

---

## Step 3 — CUTTING OUT



FOLD (â â â â ) means: Cut on the fold, the fold being the center of the pattern piece, but never a cut edge or seam. The piece should be cut double, with the fold line forming the center line. Pattern pieces that are outlined with a broken line in the cutting diagrams are to be placed face down on the fabric. The cutting diagrams on the pattern sheet show how the pattern pieces should be placed on the fabric.

The cutting diagrams show the placement of the pattern on the fabric.

For a single layer of fabric, the pattern pieces are pinned to the right side. For double layers of fabric, the right sides are facing and the pattern pieces are pinned to the wrong side. The pattern pieces that are shown extending over the fold of the fabric in the cutting diagram should be cut last from a single layer of fabric.

---

## Step 4 — SEAM AND HEMLINE ALLOWANCES are included on an average:

1 5â 8" (4 cm) for hem, 5/8â (1.5 cm) for all edges and stitches. Using BURDA copying paper, transfer the lines and signs of the pattern onto the wrong side of the fabric. Instructions can be found in the packaging.

### INTERFACING

Cut out the interfacing pieces and press onto the wrong side of the fabric.

### Sewing

While sewing, the right sides of the fabric are facing.

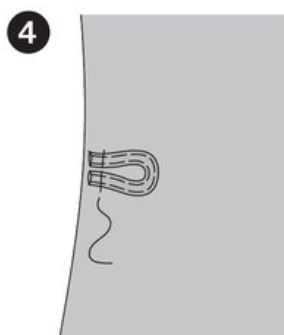
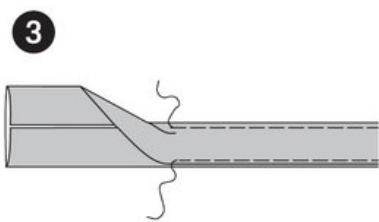
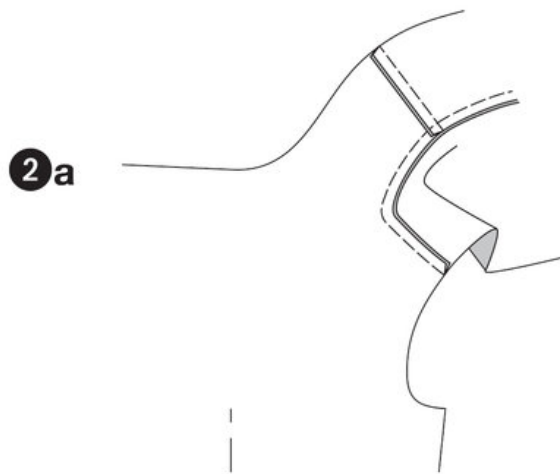
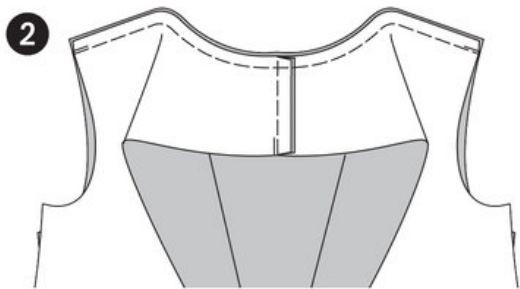
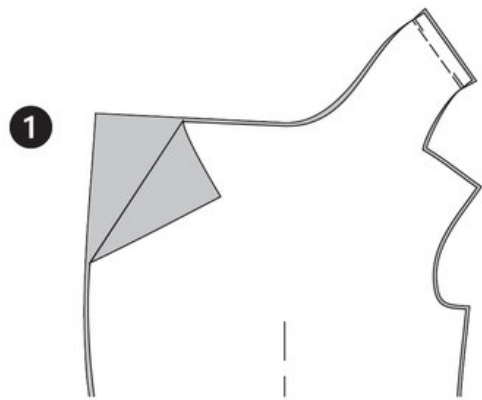
Transfer all lines of the pattern onto the right side of the fabric using chalk.

Advice for usage of jersey and knit fabrics:

To keep the flexibility of the fabric, stitch the seams using an elastic stitch or a flat adjusted zigzag stitch. For delicate knits use a ballpoint needle for your sewing machine. The round tip of the needle prevents from damaging the fabric. Neaten and trim the edges and seams using an overlock machine. If you donâ t own an overlock machine, use the overlock stitch on your sewing machine. At first, test the stitch using a remnant piece of fabric. Some jerseys, like the ones with tight knit stitch, donâ t have to be neatened.

---

**Step 5 — CENTER BACK SEAM / COLLAR**



#### CENTER BACK SEAM / COLLAR

Position the front pieces together, right sides facing. Stitch the center back seam of the extended collar. Trim allowances, neaten and press to the side.

#### SHOULDER SEAMS / COLLAR

Position the front pieces on the back piece, right sides facing. Pin the shoulder seams (seam numbers 2/6), then pin the extended collar on the back neckline. The cross lines meet. The center back seam of the collar meets the center seam of the back piece. Stitch. (a). Trim allowances, neaten and press inside the back piece (b).

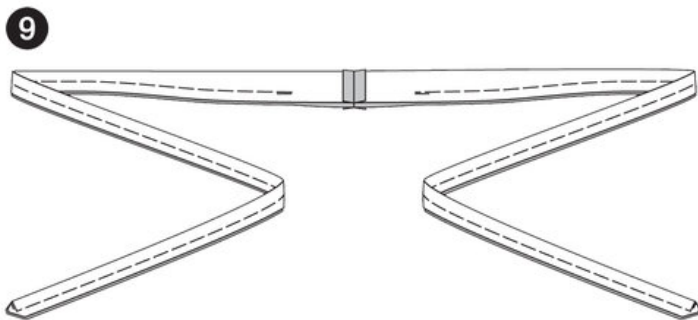
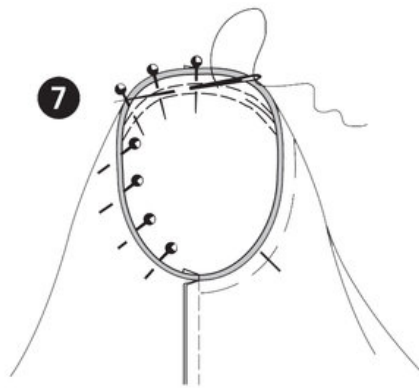
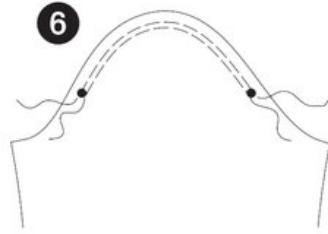
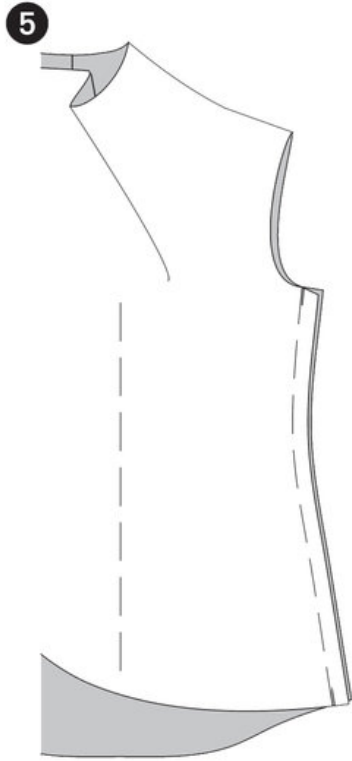
#### LOOPS

Fold the long edges of the strip to the center line. Press. Then fold the strip again lengthwise in half, wrong sides facing. Stitch the edges narrowly. Stitch the fold line narrowly. Cut the strip into two equal pieces.

Pin the loops according to the image between the cross lines, onto the side edges of the front pieces.

---

## **Step 6 — SIDE SEAMS and SLEEVES**



## SIDE SEAMS

Position the front and back pieces together, right sides facing. Pin the side seams (seam numbers 1/5) and stitch, enclosing the loops. Trim allowances, neaten and press to the side. Neaten all outer edges of the jacket using an overlock machine.

## SLEEVES

Double stitch the curve of the sleeve from \* to \*, using basting stitches. Fold the sleeve lengthwise in half, right sides facing.

Pin SLEEVE SEAMS (seam number 3/7) and stitch. Trim allowances, neaten and press to the side. Neaten the BOTTOM SLEEVE EDGE using an overlock machine.

## APPLY SLEEVES

To gather the width of the sleeve curve, slightly tighten the bobbin threads.

Apply the sleeves onto the armhole, right sides facing. Pin.

4 points are important for the right fit:

The cross lines 4/8 of sleeve and front piece have to meet. The sleeve and side seams have to meet. The cross lines of the sleeve curve have to meet the shoulder seam. The gathered width has to be distributed in a way that doesn't pucker or create pleats. Pin and stitch the seam line along the sleeve side. Trim allowances, neaten and press inside the sleeve.

## SLIT FOR TIE BELT

Press fusible bias tape onto the front pieces, around the wrong side of the slit area. Work the slits onto the jacket such as button holes. Remove the fusible bias tape close to the stitches and trim.

## TIE BELT

Position the belt pieces together, right sides facing. Stitch back center seam. Press allowances apart.

Fold the belt along the fold line, right sides facing. Stitch the edges together, leave an opening. Turn the belt inside out. Pin the edges and stitch narrowly, also stitch closing the opening. Pull the belt from the back through the loops. Then pull the ends of the belt through the slits to the inside.

---

**BurdaStyle**

The Karen Cardigan