

Sabine

By: burdastyle

<http://www.burdastyle.com/projects/sabine>



I was inspired on my recent trip to Africa by the beautiful fabrics that are worn by the women in Kenya and Tanzania. Usually those Ketenge are wrapped around the hip and upper body. Since I could not see myself looking good doing that, I decided to make pillows out of it. I added the corduroy to bring out the beautiful strong turquoise. With the global mix of fabrics this pillow becomes one of the must haves this season.

Materials

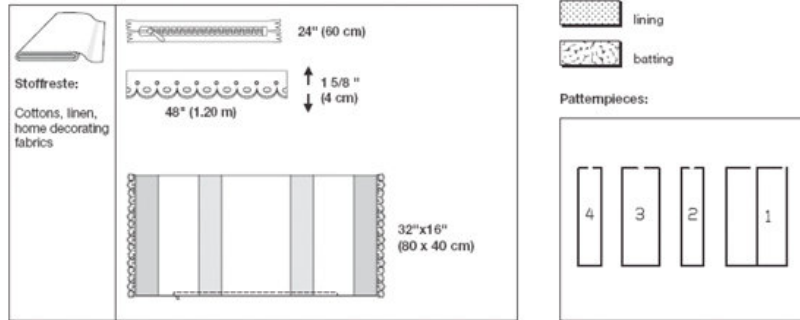
Ketenge from Tanzania, Corduroy

Step 1

Burda Download Pattern
Pillow 7974 - Instructions



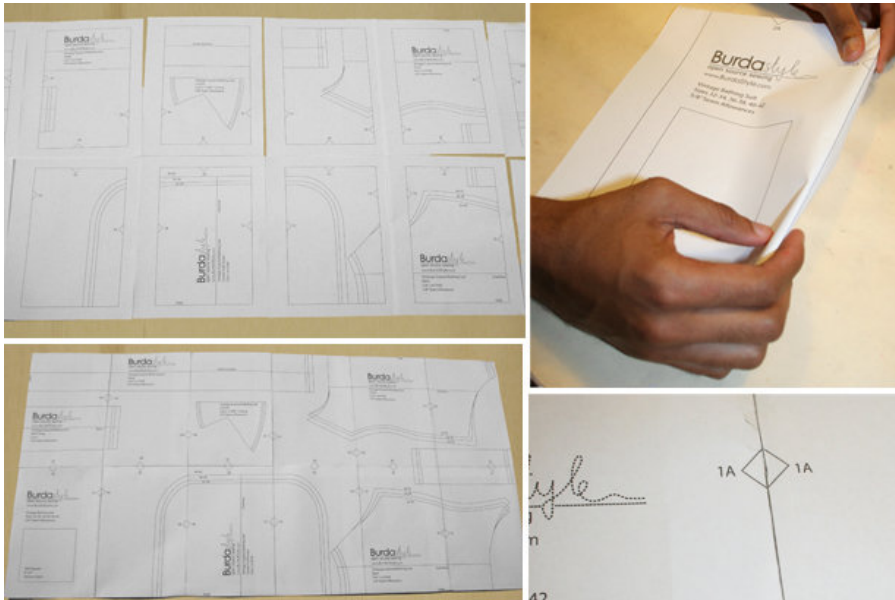
easy



PATTERN

- 1 center piece 1x
- 2 Side placket no. I 2x
- 3 Side placket no. II 2x
- 4 Side placket no. III 2x

Step 2

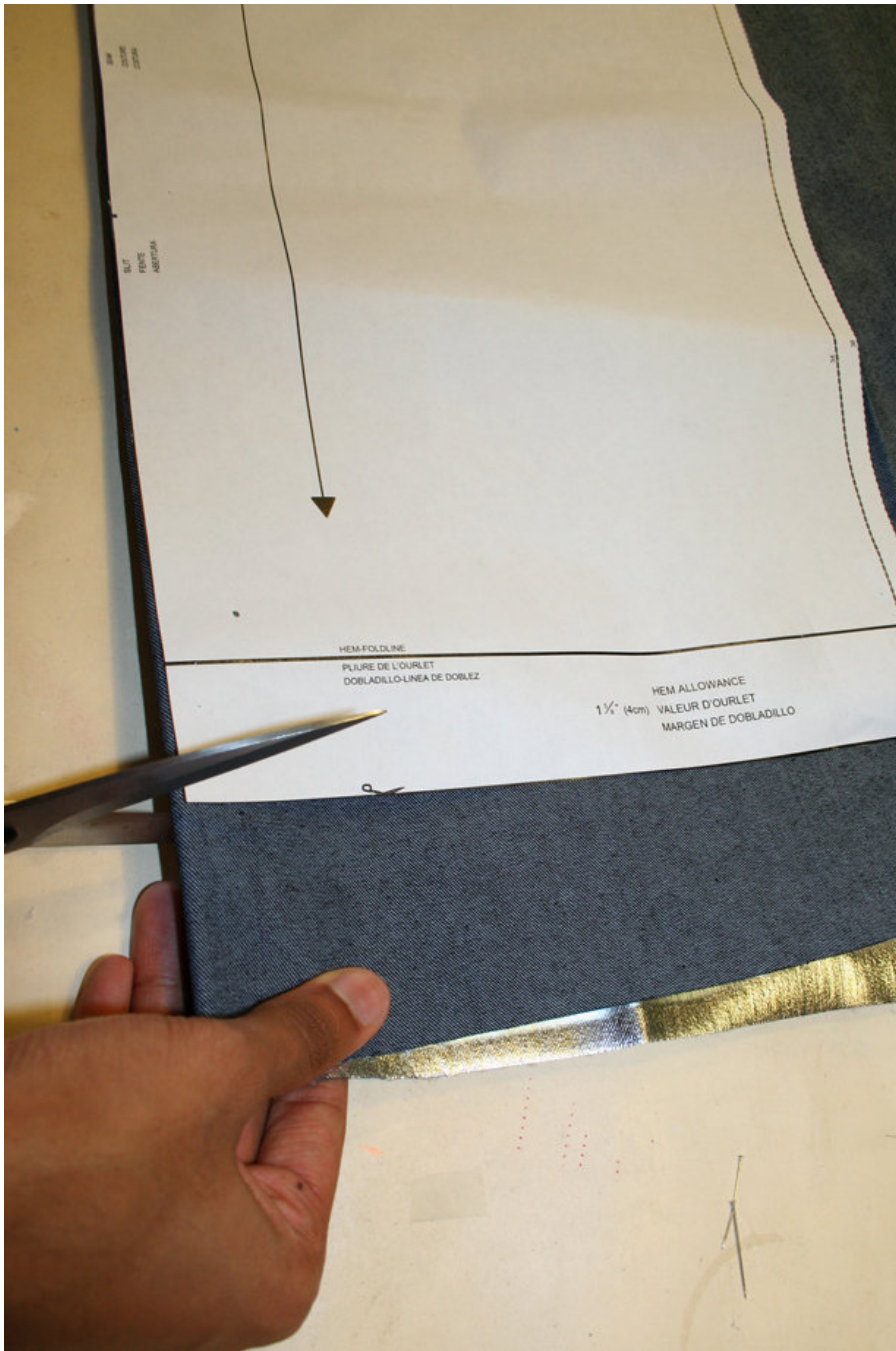


To print the patterns at home, follow the instructions:

Paper cut for ANSI A (German DIN A4) prints:

The patterns are printed out on 8 sheets with a thin frame. Wait until all sheets are printed out. Arrange the sheets so that they fit together (see additional page with the overview of the prints). Fold the single sheets on the upper and right edge along the thin frame lines. Begin with the left lower sheet and then tape the frame lines together precisely.

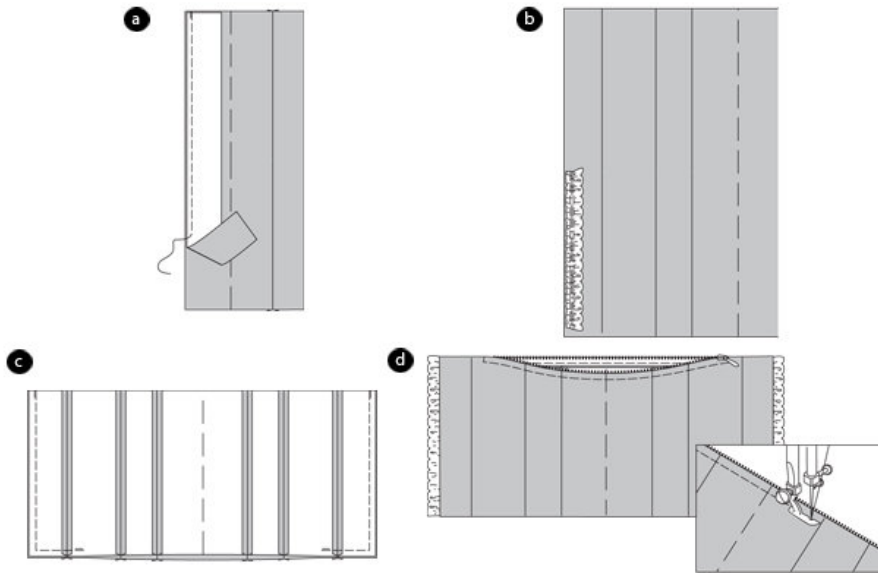
Step 3



SEAM AND HEMLINE ALLOWANCES are included on an average: $5/8$ " (1.5 cm) for all edges and stitches. Using BURDA copying paper, transfer the lines and signs of the pattern onto the wrong side of the fabric. Instructions can be found in the packaging.

The dotted lines on the pattern show, where the pattern pieces have to be sewn together. When sewing the right fabric sides are facing.

Step 4



PILLOW WITH LACE

Baste plackets no. I onto the center piece facing right to the right (seam 3). Press allowances apart. Baste the plackets no. II and III at the sides in the same way (seam 4 and 5). (a)

Cut lace tape into two pieces. Fold the ends inwards, baste. Stitch up and down the length of the lace twice in a parallel fashion, using large stitches. Tighten the under threads to 16â (40 cm) width. Knot the threads. Spread out the width of the lace so that the fabric is evenly distributed. Pin the lace onto a half of the side edges according to the drawing. The bow edges have to be placed inside the pillow. (b)

Fold the pillow in half, right side inwards. Stitch the side edges and the long edges towards the cross line as preparation for the zipper. Secure stitch ends. Neaten allowances. Turn the pillow inside out. ©

Baste zipper hidden under the slit edges stitch using the zipper tootsies, therefore keeping the zipper opened. (d)

BurdaStyle

Sabine