

# 11/2011 Leopard print pants

By: burda style magazine

<http://www.burdastyle.com/projects/112011-leopard-print-pants>

---



Leopard print pants burda style magazine patterns FAQ

## Materials

Silk satin

---

### Step 1 — Preparation



Paper cut for ANSI A (German DIN A4) prints:

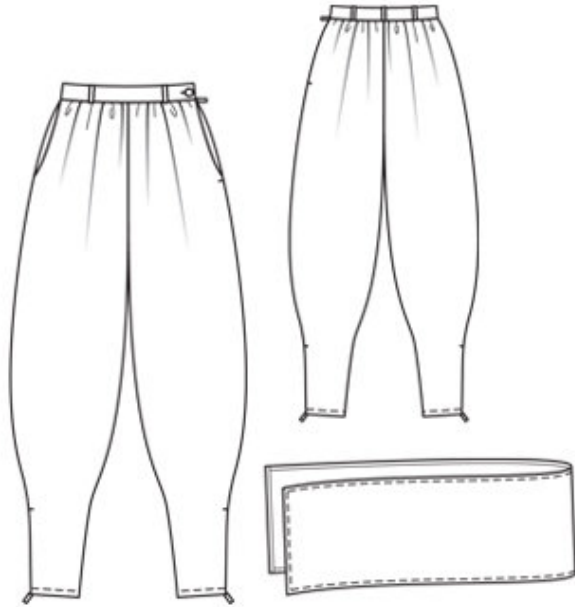
This pattern is printed on 8.5 × 11 sheets of plain paper. Do not scale or center pages before printing. Wait until all sheets are printed out before beginning to tape them together. **Do not cut out pattern pieces yet**— Arrange the sheets on a large, hard, flat surface so that they fit together, matching up like numbers and letters (i.e. 6A to 6A). To tape pattern together, fold under the margin of one piece (6A) and tape right against the line of it's matching number/letter (6A).

**burda style magazine pattern do not have seam allowance included.**

Seam and hem allowances to be added: Seams and edges 1.5 cm (5/8 in).

---

### Step 2 — Preparation



21 front trouser piece 2x

22 pocket piece 4x

23 back trouser piece 2x

24 front 2x

25 back, on a fold 1x

26 sleeve 2x

a) tie belt, a total of 204 — 208 — 212 — 216 — 220 cm (80 — 82 — 84 — 85 — 87 ins) long, 8 cm (3 1/4 ins) wide, — finished width 4 cm (1 5/8 ins),

b) facing strip for waist casing, 109 — 113 — 117 — 121 — 125 cm (43 — 44 1/2 — 46 — 47 3/4 — 49 1/4 ins) long, 5 cm (2 ins) wide (incl. allowances),

c) facing strip for back neck edge, 19 — 20 — 20 — 21 — 21 cm (7 1/2 — 8 — 8 — 8 3/8 — 8 3/8 ins) long, 4 cm (1 5/8 ins) wide (incl. allowances).

Vilene Bias Tape/stay tape: Iron to shoulder — seam edges of fronts and to neck edges.

---

### Step 3 — Side seam

Stitch right side seam, not stitching across pocket opening and ending stitching at bottom approx. 10 cm (4 ins) above slit mark.

---

### Step 4 — Pocket

Sew pocket in right side seam. Inseam pockets: Pin pocket pieces right sides together with seam allowances of pocket opening edges. Stitch in place, directly along marked seam lines. Press pocket pieces forward and

stitch together.

---

## Step 5 — Left side seam and pocket

On left front trouser piece, pin one pocket piece to front pocket opening edge, right sides facing. Stitch pocket piece in place, from upper trouser edge to lower marking, then angle stitching down to seam allowance edge. Turn pocket piece to inside. Press pocket opening edge. Pin pocket opening edge to second pocket piece — allowance of pocket extends. Stitch edges of pocket pieces together. Baste upper pocket edges in place. Sew invisible zip to left opening edges, see the. Stitch left side seam, beginning approx. 10 cm (4 ins) above slit mark and stitching up to zip. Hand-sew pocket opening edge in place, from upper edge to upper marking.

---

## Step 6 — Zip

Sew invisible zips to side slit edges, from hem line to slit mark. Stitch remaining side seams, to zip.

---

## Step 7 — Leg seams

Stitch inside leg seams. Pull one trouser leg into the other, with right sides facing. Stitch centre front and back seam as continuous seam. Gather upper edge of trousers to match edge of waistband.

---

## Step 8 — Belt carriers

Fold strip for belt carriers lengthwise, right side facing in. Stitch 1 cm (3/8 in) from fold edge. Turn right side out. Topstitch close to edge. Cut into 5 pieces. Baste belt carriers to upper edge of trousers 7 cm (23/4 ins) from side seams and at centre back.

---

## Step 9 — Waistband

Stitch waistband to upper edge of trousers, with waistband underlap extending at back opening edge. Press allowances of joining seam and of other long edge of waistband onto waistband. Fold waistband right side facing in and stitch across ends. Turn waistband right side out. Baste inside edge of waistband in place, basting edges together on underlap. Topstitch waistband close to all edges. Work a buttonhole in right end of waistband.

---

## Step 10 — Belt carriers

Turn belt carriers up, turn ends in, and stitch to upper edge of waistband.

---

## Step 11 — Hem

Turn hem allowances, to inside, turn edges under, and stitch.

---

## Step 12 — Tie belt

For size 36, stitch belt —pieces together to one long piece. Press allowances to one side. Trim allowance which lies below to 5 mm (3/16 in). Turn in allowance which lies on top and baste. Stitch from right side, 7

mm (1/4 in) from seam. On all edges, turn allowances to wrong side, turn edges under, and stitch.

---

**BurdaStyle**

11/2011 Leopard print pants