

# 11/2011 Fur coat

By: burda style magazine

<http://www.burdastyle.com/projects/112011-fur-coat>

---



Fur coat burda style magazine patterns FAQ

## Materials

Fake fur

---

### Step 1 — Preparation



Paper cut for ANSI A (German DIN A4) prints:

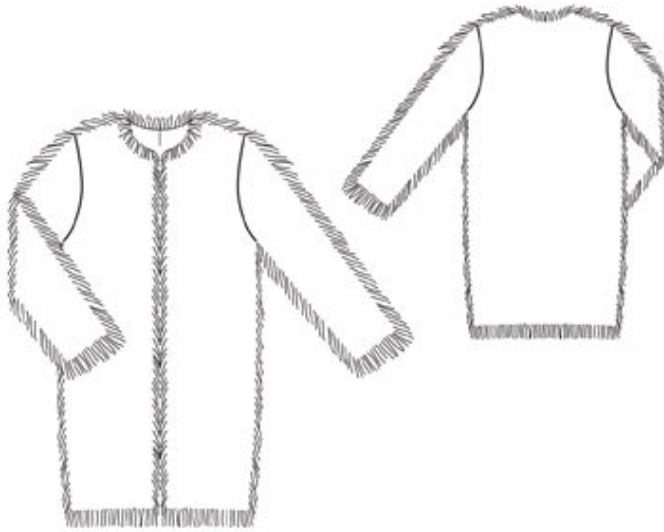
This pattern is printed on 8.5 × 11 sheets of plain paper. Do not scale or center pages before printing. Wait until all sheets are printed out before beginning to tape them together. **Do not cut out pattern pieces yet**— Arrange the sheets on a large, hard, flat surface so that they fit together, matching up like numbers and letters (i.e. 6A to 6A). To tape pattern together, fold under the margin of one piece (6A) and tape right against the line of it's matching number/letter (6A).

**burda style magazine pattern do not have seam allowance included.**

Seam and hem allowances to be added: Seams and edges 1.5 cm (5/8 in).

---

### Step 2 — Cutting out



Fake fur:

1 front 2x

2 back, on a fold 1x

3 sleeve 2x

Cut only the fabric backing and not the hairs of the fur.

Lining: pieces 1 and 3; piece 2, with an ease pleat of approx. 2 cm (3/4 in) at centre back.

---

### Step 3 — Note

When stitching, smooth the hairs of the fur aside, onto the garment piece. Press carefully. Test first on a scrap of fabric. Alternatively, finger-press the seam allowances open and sew in place with long hand stitches, if needed.

---

### Step 4 — Side, shoulder and sleeve seams

Stitch side seams, shoulder seams and sleeve seams.

---

### Step 5 — Hem

Turn sleeve hem allowances to the inside and sew in place by hand.

---

## Step 6 — Sleeve caps

Set in sleeves, easing sleeve caps.

---

## Step 7 — Construct lining

On back lining piece, stitch ease pleat at top and bottom, each approx. 5 cm (2 ins) long, and baste in between. Press pleat to one side. Stitch seams of A-lining. Set in sleeve linings.

---

## Step 8 — Line coat, hem

Pin the lining right sides together with the coat. Stitch along the front and neck edges. At corners of neck edge, trim seam allowances diagonally. Clip allowances along curves several times. Turn the lining forward and up and stitch to seam allowances, as far as possible, close to seam. Turn the lining to the inside. Pull sleeve linings inside coat sleeves. Turn the hem allowance of the coat to inside and sew in place. Turn in lining along edge of coat hem. Press fold edge lightly, push upward in a shallow curve, and pin to hem allowance. Sew lining in place. Lay extra length of lining down and press lightly. Turn in sleeve lining and sew to hem allowance. Lay extra length down and press.

---

**BurdaStyle**

11/2011 Fur coat