

4/2010 Child's Jacket

By: burda style magazine

<http://www.burdastyle.com/projects/42010-childs-jacket>

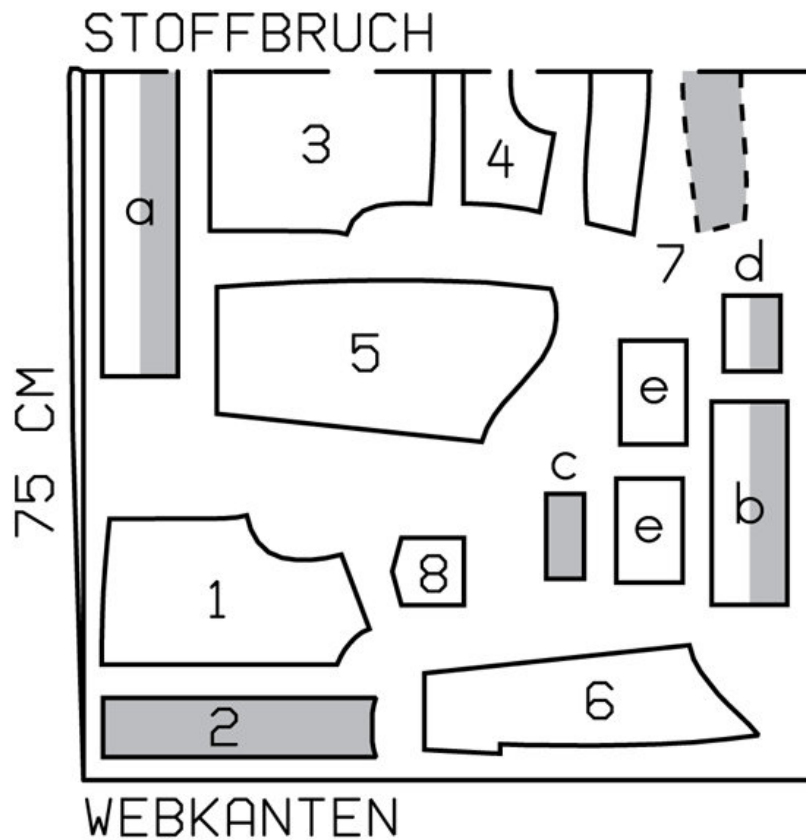


Child's Jacket burda style magazine patterns FAQ

Materials

Canvas

Step 1 — Preparation



134 98-122

Trace the pattern pieces from the pattern sheet.

The buttonholes on piece 2 are marked for size 98. Mark bottom buttonhole the same distance from lower edge of band as for size 98. The top buttonhole is in the same place for all sizes. Space the other buttonholes evenly in between. The buttonhole on piece 8 is marked for sizes 98, 104. Remark the buttonhole for the other sizes accordingly.

Seam and hem allowances:

Seams and edges 1.5 cm (5/8 in), upper edge of pocket 4 cm (15/8 ins), welt 1 cm (3/8 in).

Step 2 — Cutting Out



1 front 2x

2 front fastening band 2x

3 back, on a fold 1x

4 yoke, on a fold 1x

5 front sleeve 2x

6 back sleeve 2x

7 collar, on a fold 2x

8 upper pocket 2x

a) hem band, 62.5 â€ 63.5 â€ 64.5 â€ 65.5 â€ 67.5 cm (24 1/2 â€ 25 â€ 25 1/2 â€ 25 3/4 â€ 26 1/2 ins) long, 8 cm (3 1/4 ins) wide, finished width 4 cm (1 5/8 ins),

b) 2 cuffs, 21 â€ 21 â€ 21.5 â€ 21.5 â€ 22 cm (8 1/4 â€ 8 1/4 â€ 8 1/2 â€ 8 1/2 â€ 8 3/4 ins) long, 8 cm (3 1/4 ins) wide, finished width 4 cm (1 5/8 ins),

c) 2 welts, 8 â€ 8 â€ 9 â€ 9 â€ 9 cm (3 1/4 â€ 3 1/4 â€ 3 1/2 â€ 3 1/2 â€ 3 1/2 ins) long, 4 cm (1 1/2 ins) wide, finished width 2 cm (3/4 in),

d) 2 waistband tabs, 8 cm (3 1/4 ins) long, 6 cm (2 1/2 ins) wide, finished width 3 cm (1 1/4 ins),

e) 4 pocket pieces, 10 â€ 10 â€ 11 â€ 11 â€ 11 cm (4 â€ 4 â€ 4 3/8 â€ 4 3/8 4 3/8 ins) -wide, 6 cm (2 1/2 ins) long (incl. allowance).

Interfacing: See pattern layout. Iron interfacing onto undercollar piece. Iron strips of interfacing, about 4 cm (1 5/8 ins) wide, to wrong side of fabric, over marked welt joining lines.

Step 3 — Stitch welt pockets on fronts

Fold welts lengthwise, right side facing in. Stitch across ends. Turn welts right side out. Stitch welts right sides together with marked joining lines on fronts. Lay one pocket piece on each front, opposite welt, and stitch 1.5 cm (5/8 in) from welt joining seam. This seam should be about 5 mm (3/16 in) shorter at the ends than the welt joining seam. Slash between lines of stitching and clip diagonally toward ends of seams. Do not cut into pocket pieces. Pull pocket pieces to inside and press welts over pocket openings. Work from inside to stitch remaining pocket pieces to seam allowances of welt joining seams. Lay small triangles at pocket opening ends to inside and sew in place on pocket pieces. Trim pocket pieces even and stitch together. Edgestitch narrow edges of welts in place and stitch again 7 mm (1/4 in) from narrow welt edges.

Step 4 — Patch pockets

Press allowance on upper edge of pocket to inside, turn in and stitch 2.5 cm (1 in) from upper fold edge. Work buttonhole as marked. Press allowances on side and lower edges to inside. Lay pockets on fronts at placement lines. Edgestitch pockets in place. Make small triangles of stitching on top corners of pockets.

Step 5 — Yoke

Stitch yoke to fronts and to back. Topstitch yoke along joining seams. Stitch side seams.

Step 6 — Waistband

Stitch waistband to lower edge of jacket. Press seam allowances onto waistband. Fold waistband half to inside, turn in inside edge, and baste along joining seam. Topstitch waistband close to joining seam and lower edge.

Step 7 — Fastening bands

Stitch front fastening bands to front edges of jacket and waistband. Press seam allowances onto bands. Press allowances on inside edges of bands to inside. Fold bands on fold line, right side facing in, and stitch across bottom end. Stitch open upper ends together, from fold edge to centre front. Clip seam allowances at centre front. Turn bands right side out and baste inside edges in place. Topstitch bands close to edges.

Step 8 — Collar

Stitch collar pieces right sides together along outer edges, beginning and ending stitching at seam line of joining edge. Turn collar right side out and press. Stitch undercollar piece to neck edge of jacket, from seam number 7. Turn in edge of top collar and sew to joining seam. Top-stitch 7 mm (1/4 in) from outer edges of collar.

Step 9 — Sleeves

Stitch back sleeve seams to slit mark. Press seam allowances onto front sleeves. Topstitch front sleeves close to seams and 7 mm (1/4 in) from seams. Press allowances on front edges of vent and on back underlap edges to inside, turn in, and edgestitch in place. Stitch again 7 mm (1/4 in) wide. Stitch across top end of each sleeve vent, catching underlap. Stitch underneath sleeve seams.

Step 10 — Cuffs

Stitch outer halves of cuffs to lower edges of sleeves. Press seam allowances of joining seams and of other long edges of cuffs onto cuffs. Fold cuffs lengthwise, right side facing in, and stitch across ends. Turn right side out. Baste inside edges in place. Topstitch cuffs close to all edges.

Step 11 — Setting in sleeves

Set in sleeves. Topstitch jacket close to sleeve inset seams.

Step 12 — Tabs

Fold tabs lengthwise, right side facing in. Stitch along lengthwise edges and across one end of each. Turn right side out. Topstitch tabs close to edges. Work a buttonhole in faced end of each tab. Stitch tabs to waistband, 2 cm (3/4 in) before side seams, with tabs pointing forward. Lay tabs back and stitch again close to joining seam.

BurdaStyle

4/2010 Child's Jacket