

burda style magazine 3/2010 Mini Dress

By: burda style magazine

<http://www.burdastyle.com/projects/burda-style-magazine-32010-m>

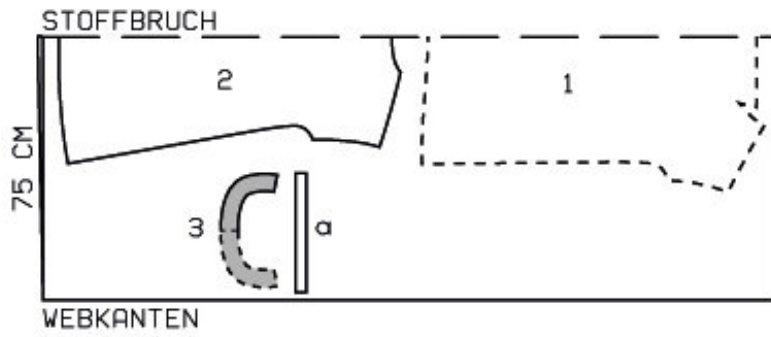


Mini Dress. For more information on this and other burda style magazine patterns, please see this dedicated blog post.

Materials

Wide Stretch Jersey

Step 1 — Preparation



118 A 36-44

Trace the pattern pieces from the pattern sheet. Follow lines and details for style 118 A.

Seam and hem allowances:

Seams and edges 1.5 cm (5/8 in), hem 4 cm (15/8 ins).

Step 2 — Cutting Out



1 front with attached sleeve,
 — on a fold 1x

2back with attached sleeve,
â— on a fold 1x
3neck facing, on a fold 1x

a) 2 sleeve bands, 30 â— 31 â— 32 â— 33 â— 34 cm (12 â— 12 1/4 â— 12 3/4 â— 13 â— 13 1/2 ins) long, 3 cm (1 1/4 ins) wide, finished width 1.5 cm (5/8 in).

Interfacing: See pattern layout. Iron a small piece of interfacing to wrong side of fabric, over each corner between front and self-facing.

Step 3 — Facings and Darts

Stitch narrow edges of neck facing to self-facing of front, up to fold line (note seam number 2). Clip front into corners, close to each last stitch. Press seam allowances of facing seams open. Lay facings down onto front. Cut darts in front as marked. Gather both edges of seam to 11 cm (4 3/8 ins), between asterisks. Pin darts. Pin a piece of seam tape, about 20 cm (8 ins) long, to wrong side of fabric, over bottom dart line. Stitch dart, catching tape. Press seam edges up.

Step 4 — Shoulder and Side Seams

Stitch shoulder seams and side seams. Trim seam allowances to 1 cm (3/8 in) wide, neaten together, and press onto back. Stitch neck facing right sides together with neck edge. Trim seam allowances. Lay facing up and stitch to seam allowances, close to seam. Turn facing to inside and press edge. Sew inside edge of facing to seams.

Step 5 — Sleeve Bands

Stitch ends of each sleeve band together. Fold sleeve bands and press, wrong side facing in. Gather attached sleeves to fit sleeve bands. Stitch edges of sleeve bands together to edges of sleeves.

Step 6 — Hem Allowance

Press hem allowance to inside. Stitch from right side with the twin machine needle, 3 cm (1 1/4 ins) from fold edge.

BurdaStyle

burda style magazine 3/2010 Mini Dress