

5/2010 Empire Waist Dress with ruched bust

By: burda style magazine

<http://www.burdastyle.com/projects/52010-empire-waist-dress-with>

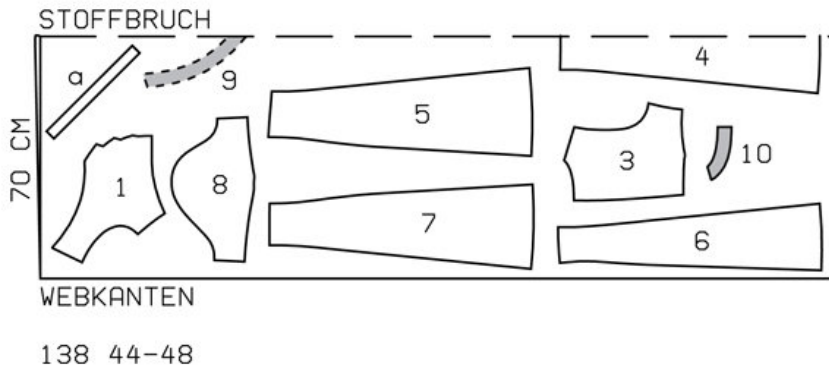


Empire Waist Dress with ruched bust burda style magazine patterns FAQ

Materials

Print batiste and plain batiste for lining

Step 1 — Preparation



Trace the pattern pieces from the pattern sheet. Lengthen pieces 5, 6, and 7 as indicated.
 The pleat arrows marked on piece 1 are for size 44. Remark pleat arrows for the other sizes accordingly.
 Seam and hem allowances:
 Seams and edges 1.5 cm (5/8 in), hem 4 cm (15/8 ins).

Step 2 — Cutting Out



Print batiste:
 â— 1 front 2x
 â— 3 back 2x
 â— 4 centre front skirt panel,

â— on a fold 1x

â— 5side front skirt panel 2x

â— 6centre back skirt panel 2x

â— 7side back skirt panel 2x

â— 8sleeve 2x

â— 9front facing, on a fold 1x

10back facing 2x

a) 2 bias binding strips for lower edges of sleeves, 35 â— 37 â— 39 â— 41 â— 43 cm (133/4 â— 141/2 â— 151/2 â— 161/4 â— 17 ins) long, 3 cm (11/4 ins) wide (incl. allowance).

Plain batiste (lining):

â— 2front lining, on a fold 1x

Interfacing: See pattern layout.

Step 3 — Pleats, centre front seam, darts and basting lining

Fold pleats in fronts in arrow -direction and baste. Stitch centre front seam, beginning at upper edge, exactly at seam line on neck edge. Press seam allowances open. Stitch darts in front lining piece. Press darts toward centre front. Baste front lining to wrong side of outer fabric and treat as one layer of fabric from now on.

Step 4 — Shoulder and Side Seams of Bodice

Stitch shoulder seams on bodice and on neck facing. Stitch side seams of bodice.

Step 5 — Skirt panels and stitching skirt to bodice

Stitch section seams and side seams of skirt panels. Stitch skirt to bodice. Press seam allowances down.

Step 6 — Zipper

Sew invisible zip to back opening edges. Stitch centre back seam from lower edge to zip.

Step 7 — Face neck edge

Pin facing right sides together with neck edge of dress. At zip opening, turn facing back about 5 mm (3/16 in) before edge of opening and pin to upper edge. Lay allowances on opening edges of dress outward and pin to neck edge, over facing. Stitch along neck edge. Trim seam allowances and clip into point of neck edge. Turn allowances on edges of opening to inside. Lay facing up and stitch to seam allowances, close to seam, as far as possible. Turn facing to inside and sew to zip tapes and to shoulder seams. Sew inside edge of front facing to lining.

Step 8 — Binding Strips

Fold pleats in lower edges of sleeves and baste next to marked seam line. Trim away allowance on lower edges of sleeves. Fold binding strips in half lengthwise and press, right fabric side facing out. Unfold strips again. Now turn both lengthwise edges of strips in to the pressed crease, one after the other, and press again. Unfold binding strips and pin to edges of sleeves, from right side of fabric. Stitch binding strips in place, stitching along the fold, 7 mm (1/4 in) from edge. Lay binding down. Stitch sleeve seams, stitching ends of binding together. Press seam allowances open. Fold binding strips over edges of sleeves to inside and baste

to joining seam. Working from right side, stitch close to seam, catching inner binding edge.

Step 9 — Sleeve Caps

Set in sleeves, easing sleeve caps.

BurdaStyle

5/2010 Empire Waist Dress with ruched bust