

# 10/2010 Karl Lagerfeld's Jacket Pattern

By: burda style magazine

<http://www.burdastyle.com/projects/102010-karl-lagerfelds-jacket-p>

---



Karl Lagerfeld designed an outfit for burda style magazine— this is the jacket with elongated front panels that get tacked up under the armholes. See the burda style magazine burda style magazine patterns FAQ for more information on these patterns.

## Materials

2 1/2 yards (2 metres) 140cm wide white waffle pique, 1 1/8 yards (1.5 metres) lining, 1 large button, 2 smaller buttons. 1 large sew-on snap. 1 pair raglan shoulder pads. Fabrics: Soft jacket fabrics with some body

---

## Step 1 — Preparation

Trace the pattern pieces from the pattern sheet. Trace piece 1 twice from the pattern sheet. Cut one piece apart on the lining / facing line = front lining piece and front facing. Mark bound pocket (lower pocket) on facing only. By turning up the fronts, the pockets will be visible on the outer side of the finished jacket.

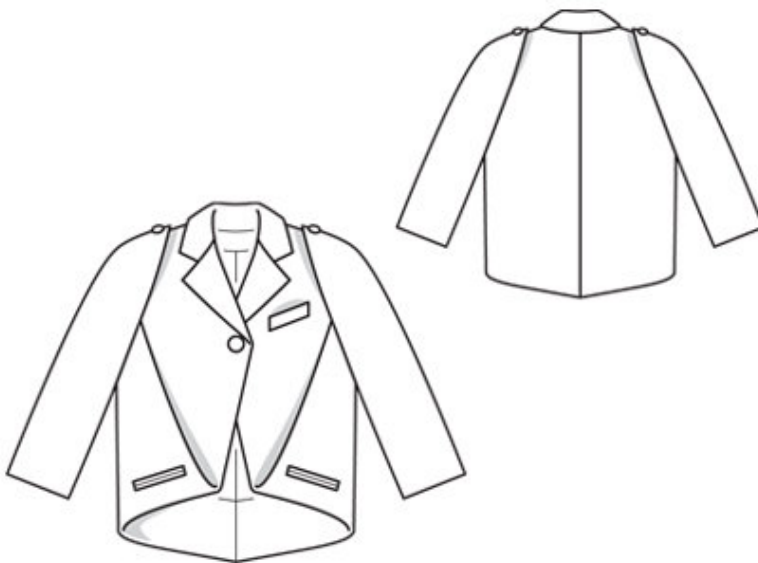
Trace the pocket piece from piece 1 as a separate pattern piece. For the back lining piece, lay the paper pattern piece for the back facing on the paper pattern piece for the back and mark the lining line along inside edge of facing. Mark the lower line for the back lining piece 14.3 cm (5 5/8 ins) above the fold line. Trace the back lining as a separate pattern piece. Trace the sleeve lining as a separate pattern piece, up to marked upper lining line.

Seam and hem allowances:

Seams and edges 1.5 cm (5/8 in), sleeve hems 4 cm (1 5/8 ins). Cut lining pieces with 1 cm (3/8 in) seam and hem allowances.

---

## Step 2 — Cutting Out



Waffle piquee:

1 front with integrated

fold-up section 2x

front facing 2x

2 back 2x

3 front sleeve 2x

4 back sleeve 2x

5 collar, on a fold 2x

6 back facing, on a fold 1x

7 upper left welt 1x

a) 4 bias binding strips (lower pockets), 15 cm (6 ins) long, 3 cm (1 1/4 ins) wide (incl. allowance),

b) 2 pocket pieces (lower pockets), 15 cm (6 ins) wide, 8 cm (3 1/4 ins) long (incl. allowance).

Lining:

Pieces 1, 3 and 4 as listed under "Preparation"; piece 2 as listed under "Preparation" and with an ease pleat of about 2 cm (3/4 in) at centre back; pocket pieces (pieces 1 and b), twice each.

Interfacing: See pattern layout. Iron a strip of interfacing, 4 cm (1 5/8 ins) wide, to wrong side of left front, over marking for upper pocket, so that interfacing strip extends 3 cm (1 1/4 ins) above welt joining line and 1 cm (3/8 in) below welt joining line.

---

### **Step 3 — Sew welt pocket on upper left front**

Fold welts lengthwise, right side facing in. Stitch across ends. Turn welts right side out. Stitch welts to fronts, at each marked joining line, right sides together — welts point down. Lay fabric pocket pieces on fronts opposite welts and stitch 1.5 cm (5/8 in) from welt joining seam. These seams should be about 7 mm (1/4 in) shorter at the ends than the welt joining seams. The seam on the slanted upper pocket must be 1 cm (3/8 in) shorter at the front end than the welt joining seam. Slash between lines of stitching and clip diagonally toward each last stitch. Do not cut into pocket pieces. Pull pocket pieces to inside and press welts over pocket openings. On the inside, stitch pocket lining pieces to seam allowances of welt joining seams. Fold small triangles at pocket opening ends to inside and stitch to pocket pieces. Trim pocket pieces even and stitch together. Sew narrow edges of welts in place by hand.

---

### **Step 4 — Sew bound pockets on front facings**

Lay binding strips right sides together with joining lines so that binding strips meet exactly in centre, between the lines. Stitch binding strips in place along joining lines. Slash between lines of stitching and clip diagonally toward each last stitch. Do not cut into binding. Press seam allowances open. Fold binding strips over seam allowances to inside and baste for a finished width of 6 mm (1/4 in). Work from right side to stitch in line of binding joining seams. Fold small triangles at pocket opening ends to inside and stitch to binding, from seam end to seam end. Stitch pocket lining pieces to seam allowances of binding joining seams which are closer to fold line — pocket pieces lie over pocket opening. Press pocket pieces over joining seam toward fold line. Lay pocket pieces of main fabric on pocket lining pieces and stitch to seam allowances of remaining binding joining seams, close to seams. Trim pocket pieces even and stitch together.

---

### **Step 5 — Lay facings right sides together with fronts and integrated fold-up sections**

Lay facings right sides together with fronts and integrated fold-up sections. Stitch along edges of notched collar, from marking (seam number 2), and along front edges, to fold line, then stitch front fold-up edges, as far as bottom corner. Turn facings to inside and press edges. Baste facings to side and lower edges of fold-up sections, then continue to marking at side seam lines. Lay fronts on back pieces (right fabric side), with facing side down, so that bound pockets lie on back pieces, above fold line — the front neck edge points down and the side ends of fold lines lie one on the other. Baste side edges of fold-up to side seam lines on back pieces, from fold line up. Place pieces so that back (wrong fabric side) lies on top. Work from back to stitch side seams below marking, as far as fold line. Clip seam allowances of backs at end of seam, at fold line. Then stitch integrated hem allowance of back pieces to side seam lines of fronts, as far as marked inside edge of facing. Now fold fronts up on fold line so that right fabric sides of front and back lie together. Pin

side seam lines together. Stitch each side seam from armhole (seam number 3) to marking, not catching seam allowance of inside facing edge or back hem allowance at bottom of seam. Turn back hem allowance to inside. Fold-up sections of fronts lie on fronts and bound pockets are visible on outside of jacket. Baste upper edges of fold-up sections to armholes.

---

## **Step 6 — Centre back seam, shoulder seams and front facings**

Stitch centre back seam, laying hem allowance down again to do so. Turn hem allowance to inside and sew in place by hand. Do not press lower edge of jacket. Stitch shoulder seams, not catching front facings. Turn facings of notched collar out again. Stitch back facing to shoulder edges of front facings. Leave facing lying right sides together with jacket for now.

---

## **Step 7 — Collar**

Stitch collar pieces together along outer edges, from seam number 2, right sides facing, beginning and ending stitching at narrow edges exactly on seam line of joining edge. Trim seam allowances. Turn collar right side out and press. Lay collar between jacket and facing. Stitch undercollar to neck edge of jacket, from marking to corner. Clip seam allowances of fronts into corners. Stitch long edge of undercollar to neck edge of jacket. Stitch top collar to facing and clip seam allowances of facing into corners. Press seam allowances of collar joining seams open. Turn facing to inside. Pin collar joining seams together exactly. Lay back facing up and stitch seam allowances together, close to collar joining seam. Lay facing down.

---

## **Step 8 — Sleeve seams and hem allowances**

Lay front and back sleeves right sides together. Stitch narrow upper edges together to fold line, then stitch upper sleeve seams, leaving buttonhole open on each side of fold line, between markings. Stitch underneath sleeve seams. Hem sleeves.

---

## **Step 9 — Sleeve caps and edges**

Stitch sleeves to armhole edges. Fold each sleeve cap on fold line, wrong side facing in — narrow top sleeve seam lies on lengthwise seam. Sew buttonhole edges together. Lay sleeve caps on shoulders of jacket so that fold lines meet abutting lines. Sew smaller buttons to shoulder seams to match buttonholes. Sew fold edges of sleeves in place by hand (about 1 cm / 3/8 in inside).

---

## **Step 10 — Lining**

On back lining pieces, stitch allowances of centre seam together, 1 cm (3/8 in) from edge. For ease pleat, stitch along centre back, about 5 cm (2 ins) long, at both top and bottom, and baste in between. Press pleat to one side. Stitch side seams, shoulder seams, and seams of lining. Set in sleeve linings. Stitch lining right sides together with inside facing edges, stitching as far as possible at the bottom. Lay lining inside jacket with wrong sides facing, pulling linings into sleeves. Turn under open edges of lining and sew to front jacket facings and to back hem allowance by hand. Pin a fold, about 1 cm (3/8 in) deep, in lining, above sleeve hems. Turn in sleeve lining and sew to hem allowance. Lay extra length of lining down and press.

---

## Step 11 — Snaps

Fasten jacket in centre front with a snap fastener. Sew large button to right front, over snap position.

---

**BurdaStyle**

10/2010 Karl Lagerfeld's Jacket Pattern