

06/2011 Beach Pullover

By: burda style magazine

<http://www.burdastyle.com/projects/062011-beach-pullover>



Linen dress with sleeve and front vents. burda style magazine patterns FAQ

Materials

Linen

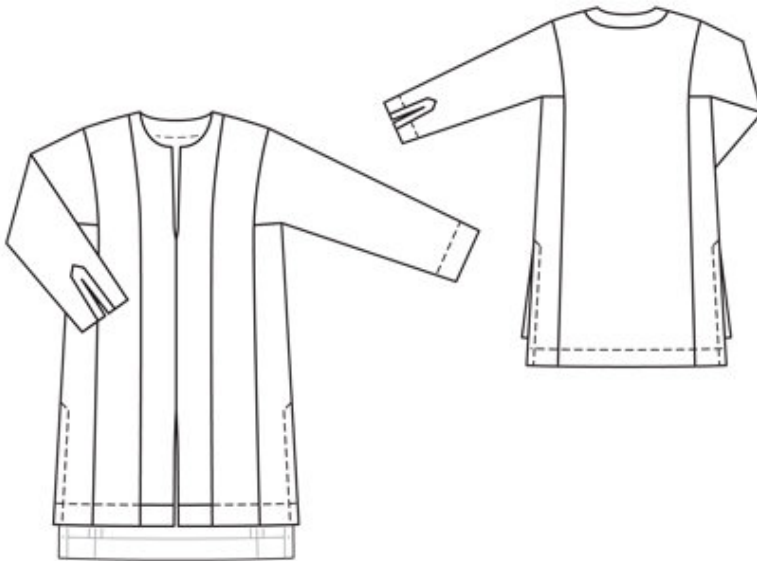
Step 1 — Preparation

Trace the pattern pieces from the pattern sheet. Lengthen piece 3 as indicated. Trace the band from piece 5 as a separate pattern piece.

Seam and hem allowances:

Seams and edges 1.5 cm (5/8 in), sleeve vent band 1 cm (3/8 in), hem and sleeve hems 6 cm (23/8 ins).

Step 2 — Cutting out



1centre front 2x

2side front 2x

3centre back, on a fold 1x

4side back 2x

5sleeve 2x

â— sleeve vent band 2x

6back facing, on a fold 1x

Step 3 — Darts

Stitch darts in centre front pieces. Press darts toward centre.

Step 4 — Front

Stitch side front pieces to centre front pieces. Stitch side back pieces to centre back piece. Begin and end upper ends of seams, exactly at seam marks. Do not press seam allowances open.

Step 5 — Shoulder seams

Stitch shoulder seams. Press seam allowances open.

Step 6 — Hem

Turn sleeve hem allowances to inside, turn in to 5 cm (2 ins) wide, and baste.

Step 7 — Sleeve vents

Press allowances on outer edges of sleeve vent bands to inside. Pin bands to sleeves over each marked slash line, with right side facing wrong side. Stitch closely around slash line. Slash between lines of stitching. Turn bands to outside. Press edges of vent. Edgestitch bands in place. Remove basting at hem.

Step 8 — Sleeves

Stitch sleeves to front and back, above seam marks. Press allowances of sleeve joining seams away from sleeves and press allowances of section seams open.

Step 9 — Side seams

Stitch side seams, leaving slits open. Stitch sleeve seams below seam mark (seam number 5), laying hem allowances down again. Press seam allowances open. Stitch sleeves to upper edge of side front and back pieces, from each corner to side seam, not catching side seam allowances. Press seam allowances of horizontal seams down. Topstitch 5 cm (2 ins) from lower edges of sleeves, beginning and ending at sleeve vent band.

Step 10 — Hem

Turn hem allowance of dress to inside, turn in, and stitch 5 cm (2 ins) from lower edge. Press allowances at side slit edges to inside, turn in and stitch 2 cm (3/4 in) from slit edges, angling stitching at top of slit.

Step 11 — Self-facings

Turn self-facings of fronts to inside. Stitch back facing to shoulder edges of front facings with wrong fabric sides facing. Press seam allowances open. Press allowance on inside edge of facing to right side of fabric. Pin facing to neck edge, wrong sides together. Stitch along neck edge. Trim seam allowances. Turn facing to outside and press neck edge. Do not yet press edges of front opening.

Step 12 — Facings

Lay fronts together, with wrong sides facing, and turn facings forward again. Pin centre seam lines together and stitch between markings. Lay facings on fronts again (right side of fabric). Press seamed edges and slit edges. Edgestitch pressed-under edges of facing in place. Sew facings to hem edge.

BurdaStyle

06/2011 Beach Pullover