

Blouse 03/2012

By: burda style magazine

<http://www.burdastyle.com/projects/blouse-032012>



Blouse sewing pattern. Blouse with standing collar and gathered neckline. Made in a metallic batiste fabric.
burda style magazine patterns FAQ

Materials

Metallic batiste, fabric width: 160 cm (63 ins), length: 1.30 1.30 1.35 1.35 1.35 m (1 1/2 1 1/2 1 5/8 1 5/8 1 5/8 yds). Vilene/Pellon G 785. Vilene Bias Tape/stay tape. 10 small buttons.

Step 1 — Preparations



Paper cut for ANSI A (German DIN A4) prints:

This pattern is printed on 8.5 × 11 sheets of plain paper. Do not scale or center pages before printing. Wait until all sheets are printed out before beginning to tape them together. **Do not cut out pattern pieces yet**— Arrange the sheets on a large, hard, flat surface so that they fit together, matching up like numbers and letters (i.e. 6A to 6A). To tape pattern together, fold under the margin of one piece (6A) and tape right against the line of it's matching number/letter (6A).

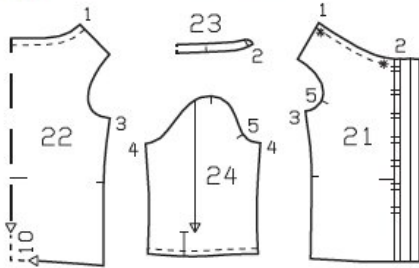
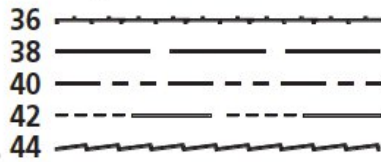
Trace the pattern pieces from the pattern sheet following the lines and markings for the correct size. Lengthen piece 22 as indicated. The buttonholes marked on piece 21 are for size 36. For sizes 38 44, mark top buttonhole the same distance from neck edge as for size 36. The bottom buttonhole is the same for all sizes. Space the other buttonholes evenly in between.

burda style magazine pattern do not have seam allowance included.

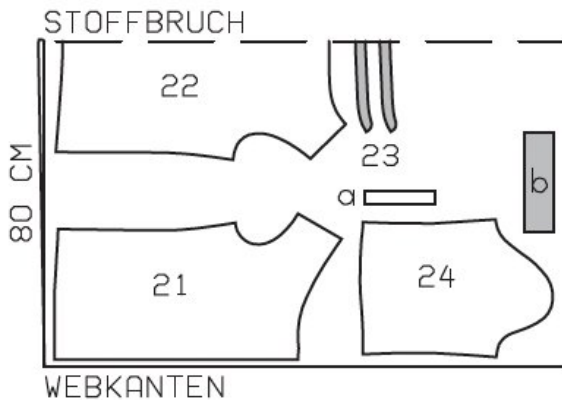
Seam and hem allowances to be added: Seams, edges and hem 1.5 cm (5/8 in), no allowance on long edge of front self-facing.

Step 2 — Cutting out

Pattern pieces 21 to 24



Fabric width, 160 cm



Webkante = Selvage
Stoffbruch = Fabric fold

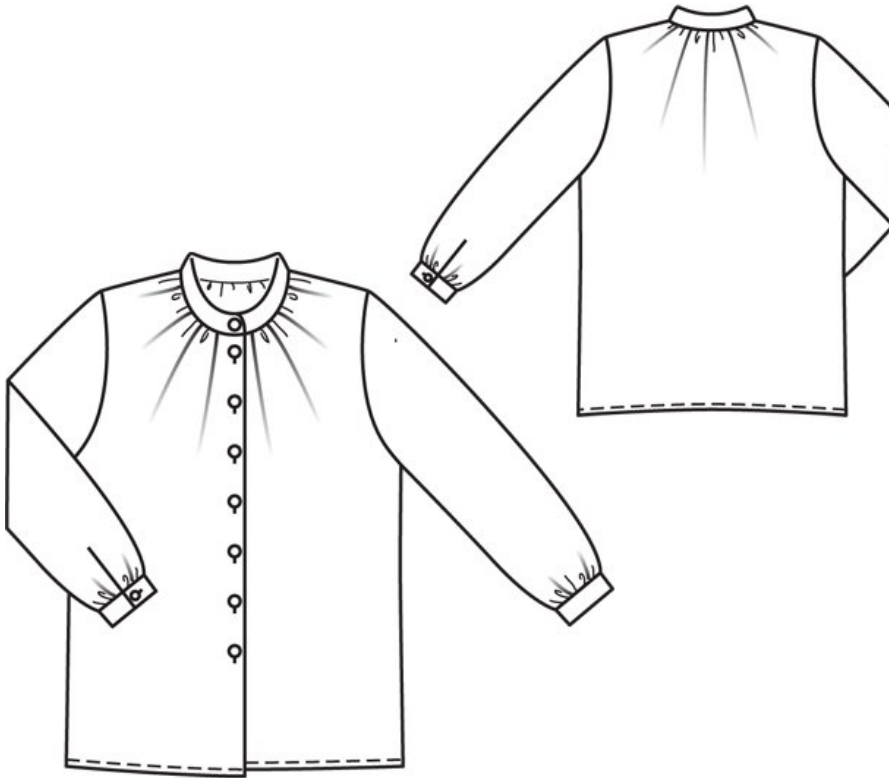
- 21 front, cut 2x
- 22 back, cut on a fold 1x
- 23 standing collar, cut on a fold 2x
- 24 sleeve, cut 2x

Also draft and cut the following pieces, not included on the pattern sheet:

- a) 2 binding strips for sleeve vents, 17 cm (6 3/4 ins), long, 3 cm (1 1/4 ins) wide (incl. allowances),
- b) 2 cuffs, with 2.5 cm (1 in) underlap, 24.5 25 26 26.5 27.5 cm (9 3/4, 10, 10 1/4, 10 1/2, 11 ins) long, 7 cm (2 3/4 ins) wide, finished width 3.5 cm (1 3/8 ins).

Interfacing: Iron Vilene Bias Tape/stay tape to armhole edges and front shoulder seam edges.

Step 3 — Sewing



Lay the front pieces right sides together with the back piece. Line up pin and sew the sides seams and the shoulder seams. Trim seam allowances, neaten together with zig zag or overlock, and press onto back piece.

Fold and press hem allowance to inside, fold in the raw edges on the inside and topstitch close to the fold.

Fold front self-facings to inside on fold line and press. Turn folded facings to inside and press. Baste to neck edge and sew to hem edge.

Gather front neck edges between asterisks to 11, 11.5, 11.5, 12, 12 cm (4 3/8, 4 1/2, 4 1/2, 4 3/4, 4 3/4 ins).
Gather back neck edge to 17.5, 18, 18.5, 19, 19.5 cm (7, 7 1/8, 7 1/4, 7 1/2, 7 3/4 ins).

Standing collar: Lay collar pieces right sides together. Stitch together along front and upper edges, beginning and end stitching exactly at seam line on joining edge. Trim seam allowances. Turn collar right side out and press. Stitch outer collar piece to neck edge. Press seam allowances onto collar. Turn in edge of inside collar piece and baste to joining seam. Work from right side to topstitch collar close to joining seam.

Sew sleeve vents, Slash each sleeve vent as marked. Spread cut edges open to a straight line and stitch to one long edge of binding strip as narrowly as possible. Press binding strip over joining seam into vent, fold to 7 mm (1/4 in) wide, turn raw edge under, and sew to inside of joining seam. On inside upper end of vent, stitch diagonally across binding. On the front vent edges, turn binding to inside and baste in place.

Stitch sleeve seams. Gather lower sleeve edges.

Stitch cuffs to lower sleeve edges. Press seam allowances of joining seams and of other long cuff edges onto cuffs. Fold cuffs lengthwise, right side facing in. Stitch across ends. Turn right side out. Baste inside edges in place. Topstitch cuffs close to joining seams.

Set in sleeves. Turn the garment inside out and set in sleeves in each armhole, right sides facing each other, easing the sleeve caps. Pin the sleeve to the armhole and stitch around the armhole opening. Press the seam allowance out in to the sleeve.

Work buttonholes in right front and front ends of cuffs. Work a buttonhole in right end of collar.

BurdaStyle

Blouse 03/2012