

07/2010 Twisted Skirt

By: burda style magazine

<http://www.burdastyle.com/projects/072010-twisted-skirt>

Twisted Skirt burda style magazine patterns FAQ

Materials

striped stretch jersey with a pattern repeat of about 20 cm

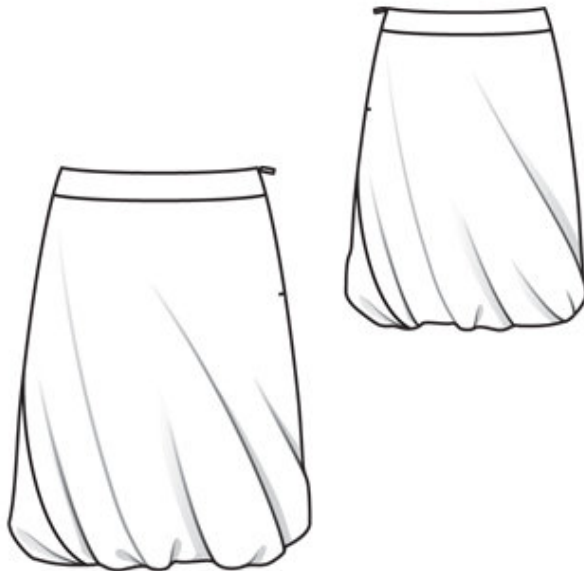
Step 1 — Preparation

Trace pattern pieces from the pattern sheet.

Seam and hem allowances:

Seams and edges 1.5 cm (5/8 in).

Step 2 — Cutting out



Jersey:

21 skirt panel, on a fold 2x

22 waistband, on a fold 4x

Lining:

23 skirt lining panel, on a fold 2x

Interfacing: Iron onto waistband pieces. Iron 2 cm (3/4 in) wide strips of interfacing to edges of zip opening.

Step 3 — Side seams

Stitch right side seams on skirt and waistband pieces. Press seam allowances open.

Step 4 — Outer waistband

Stitch outer waistband to upper edge of skirt. Press seam allowances of joining seam onto waistband.

Step 5 — Zip

Sew invisible zip to left slit edges and outer waistband. Stitch left side seam from lower edge to zip.

Step 6 — Skirt lining, side seams and zip

Stitch side seams of lining, leaving opening for zip. Gather lower edge of skirt to fit lower edge of skirt lining. For the twisted effect, pin lower edges of skirt and skirt lining right sides together so that right side seam of skirt meets centre of front skirt lining panel and left side seam of skirt meets centre of back skirt lining panel. Press seam allowances onto skirt lining. Place lining inside skirt, with wrong sides facing, and stitch to seam allowances of skirt joining seam, stitching as far as possible at zip. Turn in edge of lining and sew to zip tapes.

Step 7 — Inside waistband

Lay inside waistband right sides together with attached waistband. Turn inside waistband pieces back at zip opening, about 5 mm (3/16 in) before edge of opening, and pin to upper edge. Lay allowances at opening edges of skirt to outside and pin to upper edge, over inside waistband. Stitch along upper edge of waistband. Turn allowances at edges of opening to inside and turn waistband right side out. Lay inside waistband flat over joining seam without turning in and pin. Sew to zip tapes. Topstitch waistband close to joining seam and close to upper edge.

BurdaStyle

07/2010 Twisted Skirt