

## 02/2011 Plaid Jacket

By: burda style magazine

<http://www.burdastyle.com/projects/022011-plaid-jacket>

---



Plaid Jacket burda style magazine patterns FAQ

### Materials

plaid natt

---

## Step 1 — Preparation

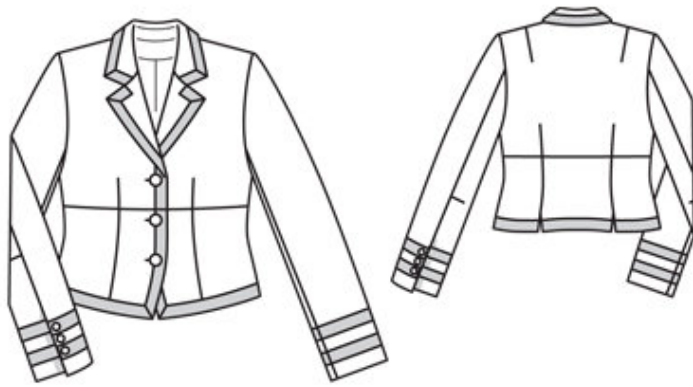
Größen, Tailles, Sizes						2		3		4		
1	N		L		K		Oberweite Tour de poitrine Bust		Tailleweite Tour des taille Waist		Hüftweite Tour des hanches Hip	
	5'6" 168 cm		5'9" 176 cm		5'3" 160 cm		ins	cm	ins	cm	ins	cm
	US	Eur.	US	Eur.	US	Eur.						
	6	32	6	64	6	16	30	76	23	58	32 ½	82
	8	34	8	68	8	17	31 ½	80	24 ½	62	34	86
	10	36	10	72	10	18	33	84	26	66	35 ½	90
	12	38	12	76	12	19	34 ¾	88	27 ¾	70	37	94
	14	40	14	80	14	20	36 ¾	92	29 ¾	74	38 ¾	98
	16	42	16	84	16	21	37 ¾	96	30 ¾	78	40 ¾	102
	18	44	18	88	18	22	39 ½	100	32 ½	82	41 ¾	106
	20	46	20	92	20	23	41	104	34	86	43 ½	110
	22	48	22	96	22	24	43 ½	110	36 ¾	92	45 ¾	116
	24	50	24	100	24	25	45 ¾	116	38 ¾	98	48	122
	26	52	26	104	26	26	48	122	41	104	50 ¾	128
	28	54	28	108	28	27	50 ½	128	43 ½	110	52 ¾	134
	30	56	30	112	30	28	52 ¾	134	45 ¾	116	55 ¾	140
	32	58	32	116	32	29	55 ¾	140	48	122	57 ¾	146
	34	60	34	120	34	30	57 ¾	146	50 ¾	128	60	152

Trace the pattern pieces from the pattern sheet. Follow lines and details for style 109. Trace front facing from pieces 1 and 2 as separate pattern pieces and glue these pieces together.

Seam and hem allowances:

Seams and edges 1.5 cm (5/8 in), hem and sleeve hems 4 cm (15/8 ins), lining 1.5 cm (5/8 in).

## Step 2 — Cutting out



Natt:

- 1 upper front 2x
- 2 centre lower front 2x
- 1+2 front facing 2x
- 3 side lower front 2x
- 4 upper back, on a fold 1x
- 5 centre lower back, on a fold 1x
- 6 side lower back 2x
- 7 upper sleeve 2x
- 8 under sleeve 2x
- 9 collar, on a fold 2x
- 10 collar stand, on a fold 2x
- 11 back facing, on a fold 1x

Lining: pieces 1 and 2 minus front facing; piece 4 minus neck facing and with an ease pleat, about 2 cm (3/4 in) wide at centre back; pieces 3, 5, and 6; and pieces 7 and 8 without vent allowances.

Interfacing: See pattern layout. Also interface hem allowances.

---

### Step 3 — Two-piece sleeve with vent

Stitch darts on under sleeves. Press darts down. Stitch front sleeve seams (seam number 10). Turn vent facing and hem allowance on upper sleeves to outside and mitre the corner. Trim allowances of mitring seam to 5 mm (3/16 in) wide and press open. At vent underlap of under sleeve, turn facing to outside on fold line and stitch in place along hem line. Turn hem allowances and facings to inside. Stitch back sleeve seams above vents. Clip seam allowance of under sleeves into corners. Press seam allowances open. Press hem and vent

edges. Sew hem allowances in place by hand. Pin petersham ribbon to sleeves, 2.5 cm (1 in) and 6.5 cm (25/8 ins) above hem edge. Turn in ends of ribbon to edges of vents. Edgestitch ribbon in place. On inside, stitch across facing and underlap at top of vent.

---

## **Step 4 — Stitch petersham ribbon to outer edges of jacket**

Work from outside of jacket to stitch petersham ribbon to front and hem edges, beginning and ending 2 cm (3/4 in) above the marked buttonhole and making small folds in ribbon to the corners. Turn ends of ribbon under. Work from the facing side to stitch petersham ribbon to edges of lapels, beginning 2 cm (3/4 in) below marked buttonhole and making small folds in ribbon to the corners. Turn ends of ribbon under. Work from top side of collar to stitch petersham ribbon in place, making small folds in ribbon to corners and turning ends of ribbon under at collar joining seam.

---

## **Step 5 — Sew lining**

Stitch ease pleat at top and bottom of upper back lining, each about 5 cm (2 ins) long, and baste in between. Press pleat to one side. Stitch darts and seams of lining. Set in sleeve linings.

---

## **Step 6 — Sew in lining**

Sew lining to inside edge of facing, leaving about 8 cm (3 1/4 ins) open at the bottom. Lay lining inside jacket, wrong sides facing, pulling linings into sleeves. Pin a fold, about 1 cm (3/8 in) deep, in lining, above hem of jacket. Turn in lining and sew to hem allowance by hand. Lay extra length down and press. Sew lining in place at back vents. Sew remaining front lining edges in place.

---

## **Step 7 — Sleeve linings**

First pin lining to underlap of sleeve vents. Trim lining which lies on top to 1 cm (3/8 in) before edge of underlap, trim away 1 cm (3/8 in) below end of vent, and clip diagonally into corner, about 1 cm (3/8 in) long. Turn in lining and pin to inside edge of vent facing and to top of vent. Turn in lower edge of lining and pin to hem allowance. Sew lining in place.

---

## **Step 8 — Buttonholes and buttons**

Work buttonholes in right front edge, with buttonholes beginning at edge of petersham ribbon. Lay jacket closed, matching centre fronts. Sew buttons to left front edge, to match buttonholes. Sew smaller buttons to sleeve vents, catching underlaps.

---

**BurdaStyle**

02/2011 Plaid Jacket