

Paola Plus

By: burdastyle

<http://www.burdastyle.com/projects/paola-plus>



The Paola wrap dress is fit for many occasions: the office, Holiday parties or Sunday brunch- and looks lovely in this gorgeous feather print gabardine.

Materials

Feather print gabardine, self-made piping, fabric-covered buttons, snaps

Step 1 — PATTERN

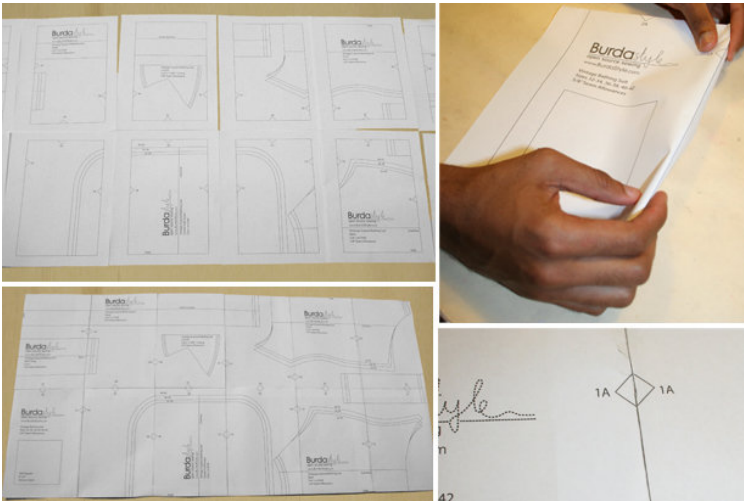


Pattern

- 1 Front 2x
- 2 Back 1x
- 3 Front inset 2x
- 4 Back inset 2x
- 5 Sleeve 2x
- 6 Cuff 8x (4 interfaced on wrong side)
- 7 Collar 4x (2 interfaced on wrong side)
- 8 Belt 2x
- 9 Front facing 2x
- 10 Back facing 1x
- 11 Sleeve hem facing 2x

Materials: 2 1/2 yards material, 10 buttons, Interfacing, 5 sets of snaps.
Follow cutting layout on pattern PDF printout.

Step 2 — ADJUST PATTERN SIZES



Select your size according to the Burda-dimension table: dresses, blouses, jackets and coats according to the bust size, trousers and skirts according to the hip width. Change the pattern to fit your measurements if they deviate from the Burda-size chart. Cut out the pattern pieces according to your size.

Refer to our *Adjust patterns for mixed sizes* technique.

LENGTHENING OR SHORTENING THE PATTERN PIECES

Our pattern is calculated for a height of 5'6" (168 cm). If you are taller or shorter, you can adjust the pattern pieces along the lines marked *lengthen or shorten here*. This way the proper fit is maintained. Always adjust all pattern pieces along the same line to the same degree.

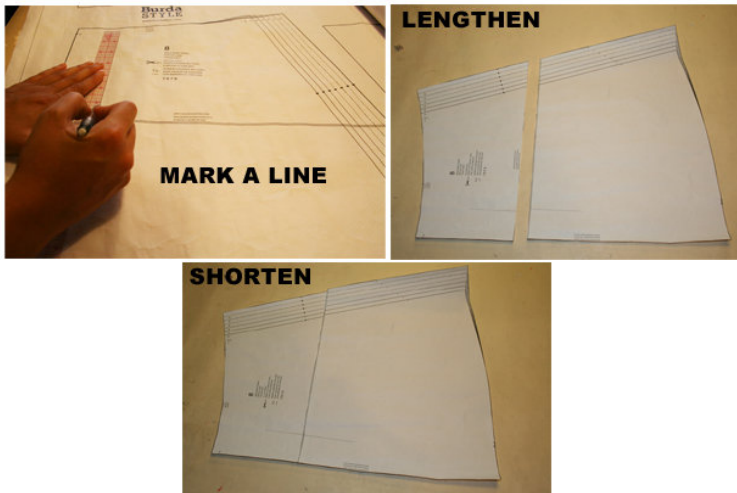
How to lengthen and shorten pattern pieces:

Cut the pattern pieces along the marked lines

To lengthen, slide the two halves of the pattern piece as far apart as necessary.

To shorten, overlap the two halves of the pattern piece as far as necessary. Blend the side edges.

Step 3 — LENGTHENING / SHORTENING PATTERN SIZES



ADJUST PATTERN SIZES

Select your size according to the Burda-dimension table: dresses, blouses, jackets and coats according to the bust size, trousers and skirts according to the hip width. Change the pattern to fit your measurements if they deviate from the Burda-size chart. Cut out the pattern according to your size.

Refer to our [Adjust patterns for mixed sizes](#) technique.

LENGTHENING OR SHORTENING THE PATTERN PIECES

Our pattern is calculated for a height of 5'6" (168 cm). If you are taller or shorter, you can adjust the pattern pieces along the lines marked "lengthen or shorten here". This way the proper fit is maintained. Always adjust all pattern pieces along the same line to the same degree.

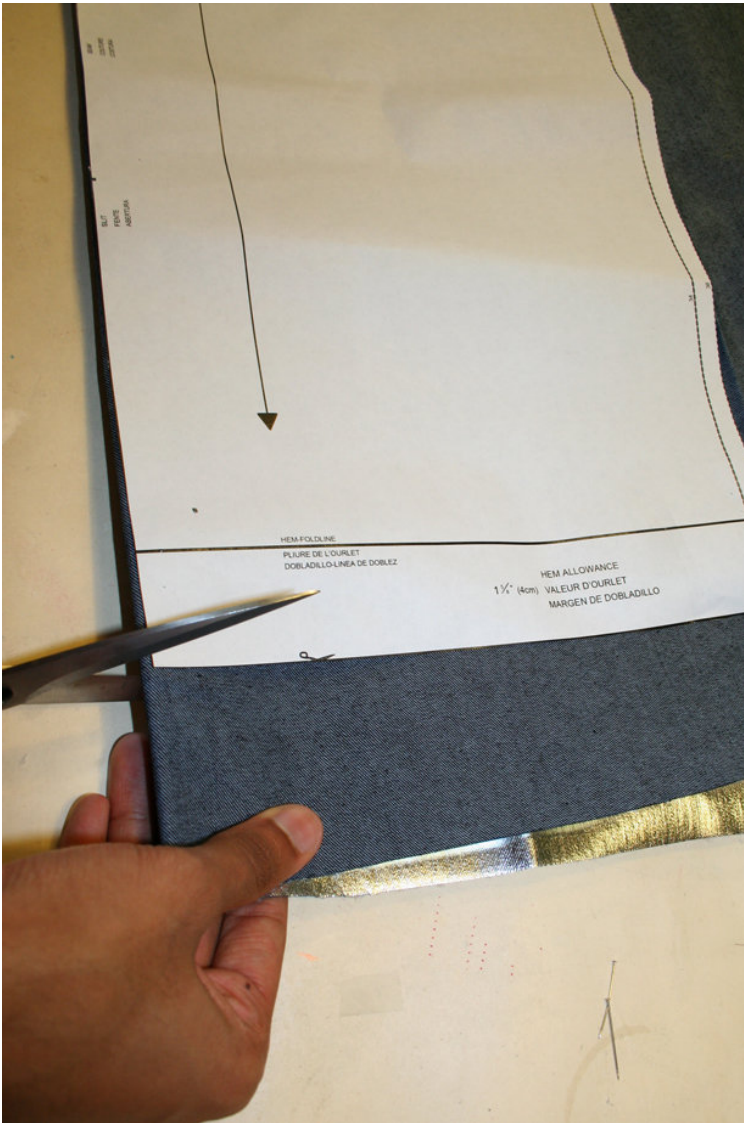
HOW TO LENGTHEN AND SHORTEN PATTERN PIECES:

Cut the pattern pieces along the marked lines

To lengthen, slide the two halves of the pattern piece as far apart as necessary.

To shorten, overlap the two halves of the pattern piece as far as necessary. Blend the side edges.

Step 4 — CUTTING OUT



CUTTING OUT

FOLD (— — — —) means: Cut on the fold, the fold being the center of the pattern piece, but never a cut edge or seam. The piece should be cut double, with the fold line forming the center line. Pattern pieces that are outlined with a broken line in the cutting diagrams are to be placed face down on the fabric. The cutting diagrams on the pattern sheet show how the pattern pieces should be placed on the fabric.

The cutting diagrams show the placement of the pattern on the fabric.

For a single layer of fabric, the pattern pieces are pinned to the right side. For double layers of fabric, the right sides are facing and the pattern pieces are pinned to the wrong side. The pattern pieces that are shown extending over the fold of the fabric in the cutting diagram should be cut last from a single layer of fabric.

SEAM AND HEMLINE ALLOWANCES are included on an average:

1 1/2" (3 cm) hemline, 5/8" (1.5 cm) for all edges and stitches. Using BURDA copying paper, transfer the lines and symbols of the pattern onto the wrong side of the fabric. Instructions can be found in the packaging.

INTERFACING

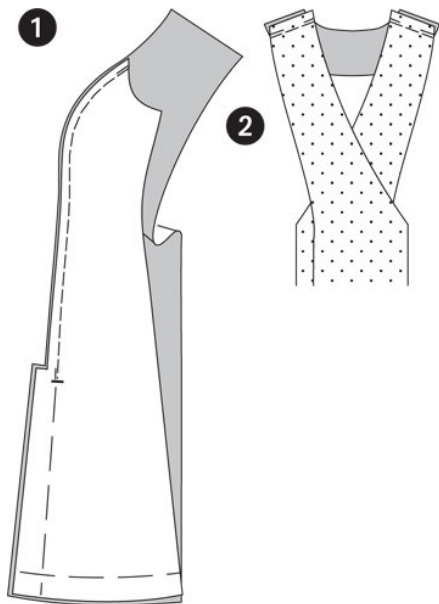
Press the interfacing pieces (indicated in the first step) onto the wrong side of the fabric.

SEWING

While sewing, the right sides of the fabric are facing.

Transfer all lines of the pattern onto the right side of the fabric using basting stitches.

Step 5 — PRINCESS SEAMS / SIDE SEAMS



DRESS

Front princess seams / pleats

1 Position the side and center front pieces together, right sides facing. Pin princess seams (seam number 1). Position the pleats and pin. Stitch the princess seams from the top of the pleats to the cross line. Secure seam ends. Neaten allowances and press apart. Keep pleats pinned.

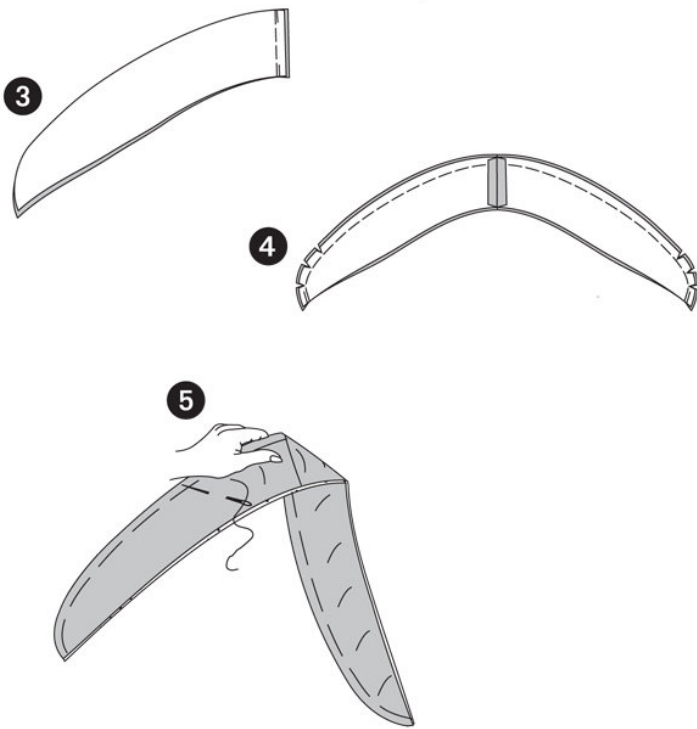
Pin, stitch and press the BACK PRINCESS SEAMS accordingly (seam number 2).

SHOULDER SEAMS

Position the front and back pieces together, right sides facing. Pin the shoulder seams (seam number 3) and stitch, easing the back shoulder edge. Neaten allowances and press apart.

2 Position the front and back plackets together, right sides facing. Stitch shoulder seams (seam number 5). Press allowances apart. Neaten outer placket edge.

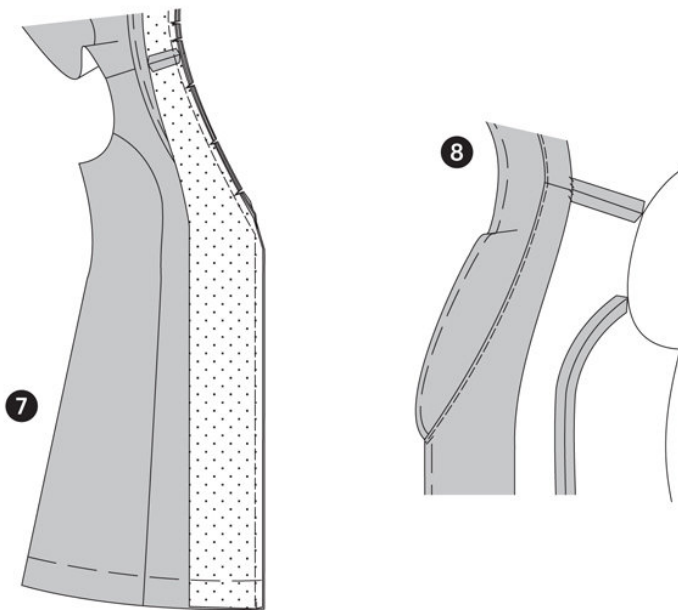
Step 6 — COLLAR



COLLAR

Position the top collar pieces together, right sides facing. Stitch center back seam. Press allowances apart. Stitch the center seam of the undercollar accordingly.

Step 7 — ATTACHING COLLAR



Position the top collar and undercollar together, right sides facing. Pin. Slightly push the overlapping length. Pin the edges together and stitch. Trim allowances and snip in at the curves. Turn collar and press.

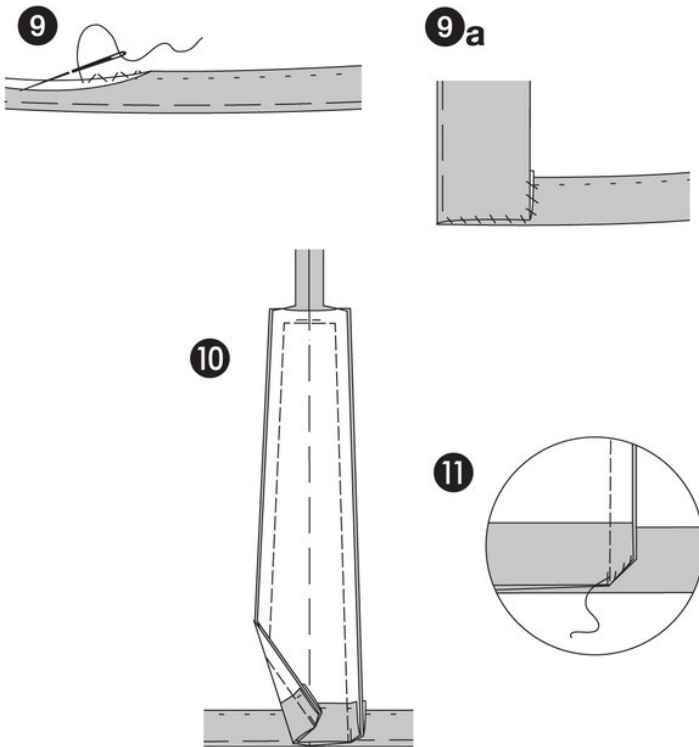
Camber the undercollar and stitch the top collar using slanted staying stitch. Position the open edges together.

Position the collar on the neckline (seam number 4) and pin. The undercollar faces the front and back piece and the cross lines meet the shoulder seams.

Position the placket on the front edges and on top of the collar along the neckline. Shoulder seams meet. Stitch, enclosing the collar. Neaten allowances and snip in.

Fold the placket inside, pin and press. Position the collar inside the neckline. Topstitch the neckline along the collar seam line narrowly. Sew the placket by hand onto the allowances of the shoulder seams.

Step 8 — BOX PLEATS / FRONT AND BACK PRINCESS SEAMS



BOX PLEATS / FRONT AND BACK PRINCESS SEAMS

Neaten the back pleat piece. By hand, sew the back of the pleat onto the hemline.

Position the back and side pieces of the pleat together, right sides facing. Pin the pleat seams and stitch. Stitch along the top edges to the princess seams. Secure seam ends.

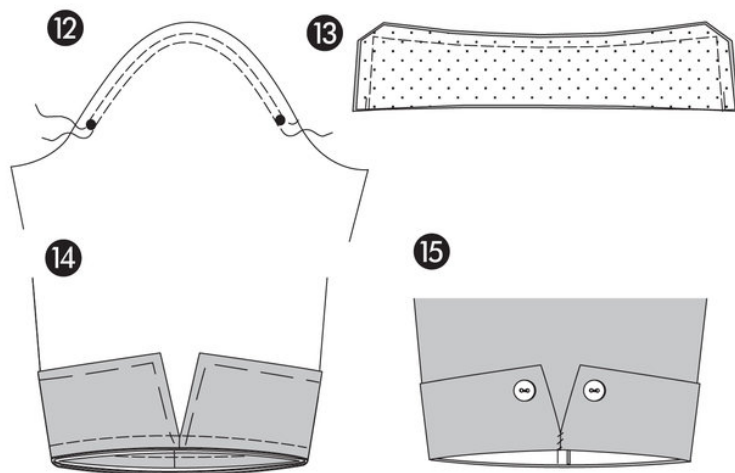
Fold the allowance corners of the pleat at the hemline inside, right sides facing. Stitch by hand.

HEMLINE

Remove the pins from the pleats along the hemline. Bring the front plackets in position.

Neaten hemline, turn inside, pin and press. Sew hemline by hand. Turn the plackets inside and stitch on the hemline.

Step 9 — SLEEVE & CUFFS



SLEEVE

12 To ease the sleeve curve, double stitch from * to * using basting stitches. Fold the sleeve lengthwise, right sides facing.

Pin sleeve seams (seam number 7) and stitch. Trim allowances, neaten and press to the side.

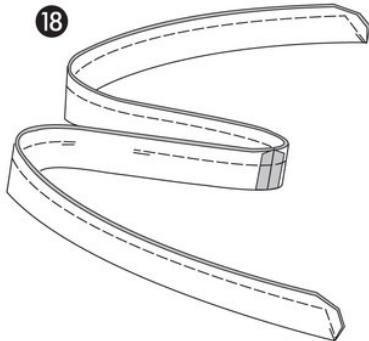
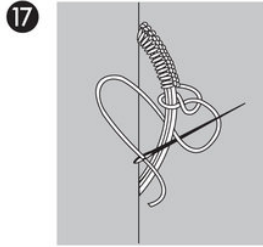
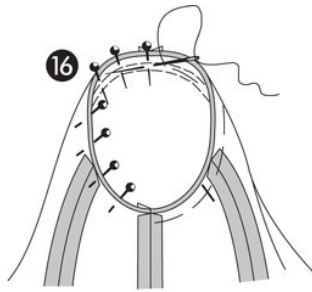
SLEEVE CUFF

Position an interfaced and a non-interfaced sleeve cuff piece together, right sides facing. Stitch top (without seam number) and narrow edges together. Trim allowances and cut the corners at a slant. Turn pieces, pin and press. Position the open edges together and pin.

Position the right side of the sleeve cuff on the wrong side of the bottom sleeve edge, The interfaced cuff piece faces the sleeve. The narrow edges meet (seam number 8). Stitch cuff. Trim allowances and neaten.

Turn the sleeve cuff outside. Press the sleeve edge. Position the narrow edges together and stitch around $\frac{1}{2}$ " (1 cm) from the edge by hand to hide the allowance. Sew the **BUTTONS** on the marked spots on the cuffs, enclosing the sleeves.

Step 10 — SLEEVE SETTING



APPLY SLEEVES

To ease the sleeve curve, tighten the bobbin threads of the seam line slightly.

16 Position the sleeve on the armhole, right sides facing. When applying the sleeve, 4 points are important for the right fit:

The cross lines 9 on sleeves and front piece have to meet. Sleeve and side seams have to meet. The cross lines on the sleeve curve have to meet the shoulder seams. The eased width has to be distributed in a way that prevents pleats or does not pucker. Pin and stitch the sleeve from the sleeve side.

Trim allowances, neaten and press inside the sleeve. Work **BUTTON HOLES** into the right front piece. Work the same top button hole also into the left front piece. Sew the **BUTTONS** on the markings X (corresponding with the button holes) on both front pieces. At the right front piece, sew another button on the back of the top button (to button the left front piece).

SNAP BUTTONS: Apply the tops of the snap buttons on the markings X on the placket of the right front piece. Accordingly, the bottom pieces of the snap buttons need to be applied on the left front piece.

LOOPS

Sew a thread loop at the side seams between the cross lines according to the image. Join the cross lines through multiple stitches; then wrap threads around the loop.

BELT

Position the belt pieces together, right sides facing. Stitch the center back seam. Press allowances apart.

Fold the belt lengthwise along the fold line, right sides facing. Stitch edges together, leave an opening. Turn the piece inside out. Pin edges, press and topstitch narrowly. Stitch the opening. Pull belt through the loops.

BurdaStyle

Paola Plus