

06/2011 Kimono

By: burda style magazine

<http://www.burdastyle.com/projects/062011-kimono>



Kimono burda style magazine patterns FAQ

Materials

Terry velour

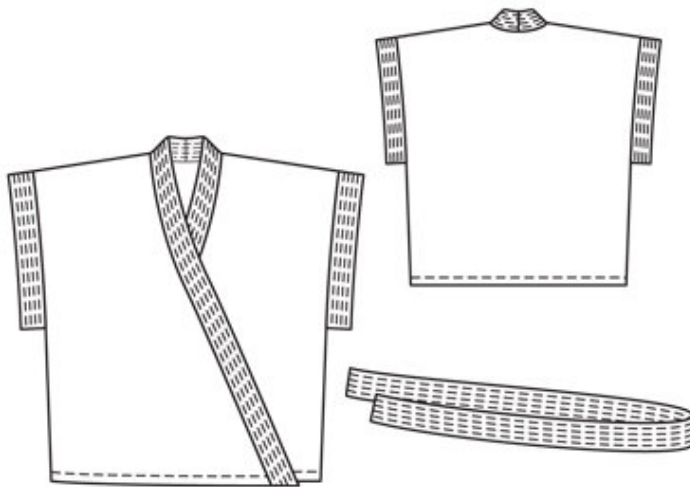
Step 1 — Preparation

Trace the pattern pieces from the pattern sheet.

Seam and hem allowances:

Seams and edges 1.5 cm (5/8 in), hem 3 cm (1 1/4 ins).

Step 2 — Cutting out



Terry velour:

21 front 2x

22 back, on a fold 1x

Piqu (contrasting fabric):

23 band for front and neck edges 2x

a) 2 armhole bands, 61 — 63 — 65 cm (24 — 24 3/4 — 25 3/4 ins) long, 10 cm (4 ins) wide, finished width 5 cm (2 ins),

b) tie belt, 130 — 140 — 150 cm (51 1/4 — 55 1/4 — 59 ins) long, 10 cm (4 ins) wide, finished width 5 cm (2 ins).

Interfacing: See pattern layout. Interface outer halves of bands. Also iron pieces of interfacing, about 3 × 3 cm (1 1/4 × 1 1/4 ins), to wrong side of front and back pieces, at seam mark near seam number 3. Iron Vilene Bias Tape to wrong side of fabric, on front shoulder edges, slanted front edges, and neck and armhole edges.

Step 3 — Shoulder seams

Stitch shoulder seams. Neaten seam allowances together and press onto front. Topstitch close to seams.

Step 4 — Hem

Stitch side seams below seam marks. Clip seam allowances at seam marks. Press seam allowances open. Press hem allowance to inside and stitch 2 cm (3/4 in) from lower edge.

Step 5 — Band

Stitch centre back seam of band piece for front and neck edges. Press seam allowances open. Stitch outer half of band to fronts and to back. Press seam allowances of joining seam and of other long edge of band onto band. Fold band lengthwise, right side facing in. Stitch across ends of band. Turn band right side out. Baste inside edge in place. Topstitch band close to joining seam, then topstitch 4 more times, spaced 1 cm (3/8 in) apart.

Step 6 — Armholes

Stitch narrow edges of each armhole band together. Stitch bands to armhole edges, matching seams of band to side seams. Press seam allowances of joining seams and of other long edges of bands onto bands. Fold bands in half, wrong side facing in, and press. Baste inside edges along joining seams. Topstitch bands close to joining seam, then topstitch 4 more times, spaced 1 cm (3/8 in) apart.

Step 7 — Tie belt

Fold tie belt lengthwise, right side facing in. Stitch edges together, leaving a section of seam open, for turning. Turn belt right side out and sew opening closed. Topstitch belt 4 times, spaced 1 cm (3/8 in) apart.

BurdaStyle

06/2011 Kimono