

3/2011 Caftan

By: burda style magazine

<http://www.burdastyle.com/projects/32011-caftan>



Caftan burda style magazine patterns FAQ

Materials

Silk Batiste

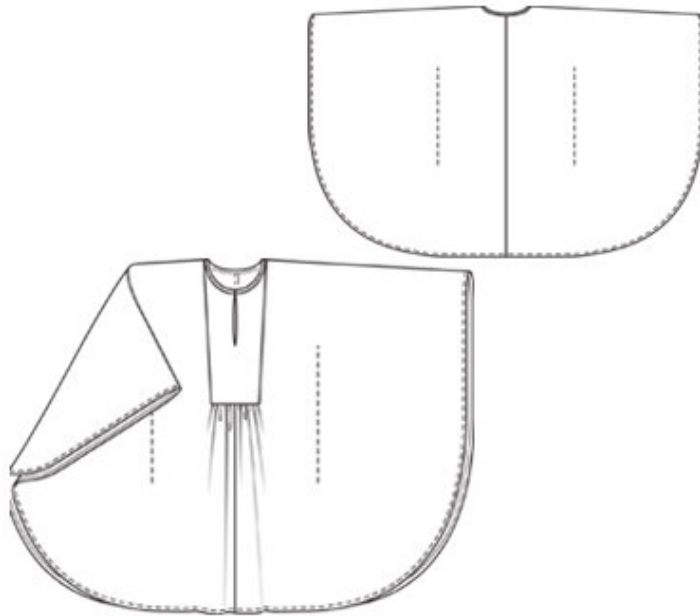
Step 1 — Preparation

Trace the pattern pieces from the pattern sheet. Glue pieces 21 and 21a and pieces 23 and 23a together on the joining lines.

Seam and hem allowances:

Seams, edges and hem 1.5 cm (5/8 in).

Step 2 — Cutting Out



21front 2x

22front insert, on a fold 2x

23back 2x

a) bias binding strip for neck edge, 47 — 49 — 51 cm (18 1/2 — 19 1/4 — 20 1/4 ins) long, 4.5 cm (1 7/8 ins) wide (incl. allowances).

Interfacing: Iron small pieces of interfacing to wrong side of front, over each lower inside corner.

Step 3 — Stitch centre seams on front and back

Stitch centre seams on front and back. Trim seam allowances to 7 mm (1/4 in) wide, neaten together, and press to one side.

Step 4 — Gather horizontal edge of front

Gather horizontal edge of front to 14 1/2— 15 1/2— 16 cm (5 1/2 1/2— 6 1/8— 6 3/8 ins), from corner to corner, first clipping diagonally into seam allowance at corners.

Step 5 — Front insert

Lay insert pieces right sides together. Stitch closely around mark-ed slash line. Slash between lines of stitching. Turn insert right side out. Press edges of slit. Baste open edges of insert to-gether. Stitch insert to vertical edges of front, from seam number 1 to each corner, then stitch to horizontal edge of front, from corner to corner. Trim allow-ances to 7 mm (1/4 in) wide, neaten together, and press toward insert.

Step 6 — Lay front right sides together with back and stitch upper seams

Lay front right sides together with back and stitch upper seams, beginning and ending stitching at marked neck edge.

Step 7 — Bind neck edge

Trim away -seam allowance of neck edge. Fold binding strip in half lengthwise and press, right fabric side out. Pin folded bind-ing strip to right fabric side of neck edge and stitch 7 mm (1/4 in) from edge. Turn binding strip up and turn ends under. Turn binding over neck edge to inside and baste over joining seam. Edgestitch binding in place. Fasten front slit with a button and a thread loop. Sew button to inside of slit edge.

Step 8 — Hand baste front and back

On front and back, hand baste along marked stitching lines to make these lines visible on right side of fabric side. Lay front on back with wrong sides facing. Pin marked stitching lines together, and stitch.

Step 9 — Hem

Press allowances on lower edges and on side edges to inside, turn edges under, and stitch in place.

BurdaStyle

3/2011 Caftan