

06/2011 Plaid shorts with back pockets and drawstring

By: burda style magazine

<http://www.burdastyle.com/projects/062011-plaid-shorts-with-back->



Plaid shorts with back pockets and drawstring burda style magazine patterns FAQ

Materials

Madras plaid

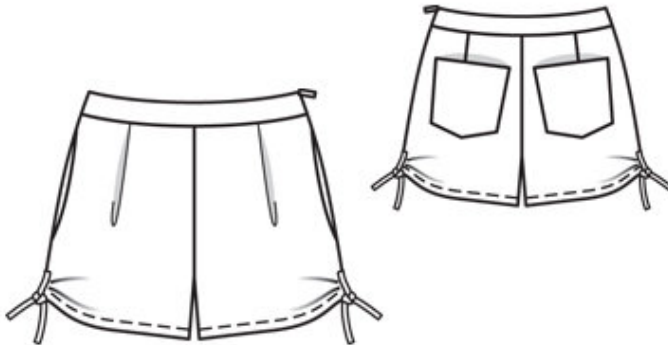
Step 1 — Preparation

Trace the pattern pieces from the pattern sheet. Follow lines and details for views A, B, and C. Trace the pocket piece from piece 1 as a separate pattern piece — it is the same for all sizes.

Seam and hem allowances:

Seams and edges 1.5 cm (5/8 in), hem for views A and B 3.5 cm (1 1/2 ins), and hem for view C 2 cm (3/4 in).

Step 2 — Cutting out



View A, B, C:

1 shorts front 2x

— pocket piece 4x

2 shorts back 2x

3 front waistband, on a fold 2x

4 back waistband, on a fold 2x

5 back pocket 2x

a) 4 tie bands, cut on the bias, 20 cm (8 ins) long, 4 cm (15/8 ins) wide (incl. allowances).
Interfacing : See pattern layout. Iron interfacing to wrong side of outer waistband pieces.

Step 3 — Pleats and waistband

Fold pleats in shorts fronts in direction of arrows and baste to upper edge. Turn hem allowances to wrong side, turn raw edges under, and stitch 1 cm (3/8 in) from lower edges. Topstitch waistband close to joining seam and upper edge. Also sew tie bands.

Step 4 — Back pockets

Press self-facing on upper edge of each pocket to wrong side. Press allowances on side and lower edges to inside. Pin pockets to back shorts pieces, at abutting lines. Edgestitch pockets in place, making small triangles of stitching at top corners of pockets.

Step 5 — Pockets

Stitch right side seam, but do not stitch across pocket opening, between markings. Pin pocket pieces right sides together with seam allowances of pocket opening edge. At pocket opening edge, stitch along seam line and above opening stitch close to side seam. Press pocket pieces forward and stitch together. Baste upper pocket edges in place.

Step 6 — Pocket

Pin a pocket piece right sides together with front pocket opening edge on left shorts front. Stitch pocket piece in place, from upper edge of shorts to lower seam mark, tapering stitching down from seam mark toward edge of seam allowances (to prevent the need to clip allowances). Turn pocket piece to inside. Press pocket opening edge. Pin pocket opening edge to second pocket piece — the seam allowance of pocket piece extends. Stitch pocket edges together. Baste upper edge of pocket in place.

Step 7 — Legs

Stitch inside leg seams. Press seam allowances open. Stitch centre front and back seam as continuous seam. Press seam open from upper edges to beginning of curve. Do not press allowances flat along curve.

Step 8 — Waistband

Stitch right side seam of waistband pieces (as mirror images on outer and inner waistband units). Stitch interfaced outer waistband unit to upper edge of shorts. Press seam allowances of joining seam toward waistband.

Step 9 — Zip

Sew invisible zip in place, from upper edge of waistband to slit mark. Stitch left side seam to zip.

Step 10 — Waistband

Lay inside waistband unit right sides together with attached waistband unit and pin upper edges together. At zip slit, turn end of inside waistband back, 5 mm (3/16 in) before edge of slit, and pin to upper edge. On slit edges, turn allowances of outer waistband to outside and pin to upper edge over, inside waistband unit. Stitch along upper edge. Turn allowances at slit edges to inside. Turn inside waistband up and stitch to seam allowances, as far as possible, close to seam. Turn inside waistband to inside and baste over joining seam, without turning edge under. Sew to zip tapes. Work from outer side of shorts to stitch along line of joining seam, thereby catching inside edge of waistband.

Step 11 — Hem Allowance

Press hem allowances to inside, turn raw edges under to 2.5 cm (1 in) wide, and stitch.

Step 12 — Tie bands

Turn in one end of each band piece. Fold bands lengthwise, right side facing in. Stitch 1 cm (3/8 in) from fold edge. Turn bands right side out and press. Sew turned-under ends closed. Lay one tie band over each side seam on inside of shorts. Stitch upper end in place, 11 cm (43/8 ins) above hem edge. Lay remaining tie bands over side seams on outside — bands point up. Stitch across ends of bands at same level as inside bands. Turn bands down and stitch again close to seams.

BurdaStyle

06/2011 Plaid shorts with back pockets and drawstring