

08/2010 Pencil Skirt

By: burda style magazine

<http://www.burdastyle.com/projects/082010-pencil-skirt>

Pencil Skirt burda style magazine patterns FAQ

Materials

Cotton velvet

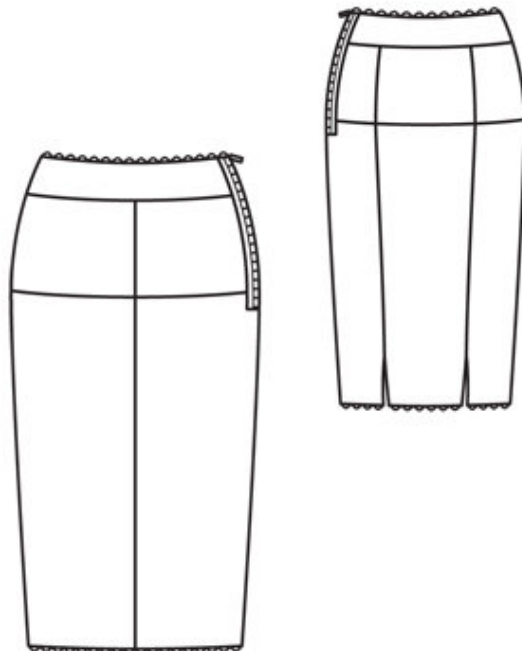
Step 1 — Preparation

Trace the pattern pieces from the pattern sheet.

Seam and hem allowances:

Seams and edges 1.5 cm (5/8 in), back section seams and vent 2 cm (3/4 in), hem 4 cm (15/8 ins), lining 2 cm (3/4 in).

Step 2 — Cutting Out



Cotton velvet:

21 front yoke 2x

22 front skirt panel 2x

23 centre back yoke, on a fold 1x

24 side back yoke 2x

25 centre back skirt panel,

— on a fold 1x

26 side back skirt panel 2x

27 front waistband, on a fold 2x

28 back waistband, on a fold 2x

Lining: pieces 21 to 26. Cut the skirt lining panels 8 cm (3 1/4 ins) shorter than the paper pattern pieces.

Interfacing: See pattern layout.

Step 3 — Centre front, back section and right seams

Stitch centre front seam of skirt. Stitch back section seams, leaving vents open. Stitch right side seam.

Step 4 — Yoke

Stitch centre front seam, back section seams, and right side seam of yoke. Stitch yoke to upper edge of skirt.

Step 5 — Lining

Sew lining as for skirt, stitching side seams as mirror images of skirt and yoke seams.

Step 6 — Face left side slit edges with lining, left side seam

Lay lining right sides together with skirt. Stitch left side edges together, from upper edges to slit mark. Lay lining up and pin. Stitch left side seam of outer fabric. Remove pins. Stitch left side seam of lining. Turn lining to inside. Press edges of slit. Press side seam allowances open. Baste lining to upper edge of skirt.

Step 7 — Waistband

Stitch right side seams of waistband units, stitching seam on inside waistband unit as mirror image. Stitch outer waistband to upper edge of skirt. Press seam allowances of joining seam onto waistband. Lay inside waistband right sides together with attached waistband. Stitch across ends of waistband and along upper edge. Turn waistband right side out. Lay inside edge flat over joining seam. Stitch from right side, along line of seam. Pin trim under upper edge of waistband so that scallops extend. Turn in ends of trim. Edgestitch trim in place.

Step 8 — Zipper

Turn in ends of zip tapes. Work from outside of skirt to pin zip to left opening edges, so that teeth lie even with edges of opening. Stitch zip in place, close to teeth and close to edges of zip tapes.

BurdaStyle

08/2010 Pencil Skirt