

burda style magazine 01/2010 Jacket

By: burda style magazine

<http://www.burdastyle.com/projects/burda-style-magazine-012010-j>

Winter jacket and cape For more information on this and other burda style magazine patterns, please see this dedicated blog post.

Materials

Wool and faux fur

Step 2 — Cutting out



Cutting out:

Jacket

Wool coating:

1— 1centre front 2x
2— 2side front 2x
3— 3back 2x
4— 4front sleeve 2x
5— 5back sleeve 2x
6— 6collar, on a fold 2x
7— 7collar band , on a fold 2x
8— 8pocket piece 2x
9— 9front facing 2x
10— 10back facing, on a fold 1x

Quilted lining:

piece 1 minus width of facing; piece 3 at centre back, on a fold and minus neck facing; pieces 2, 4 and 5.

Lining: piece 8.

2 facing strips for pockets zip, 20 cm (8 ins) long, 4 cm (15/8 ins) wide (incl. allowances).

Interfacing: See pattern layout. Also interface hem allowances.

Fur collar

Fake fur:

11— 1top collar, on a fold 1x

Lining:

11— 1undercollar with centre seam 2x

1— 1— facing, on a fold 2x

Interfacing: See pattern layout.

Step 3 — Section seams and pocket

Pin facing strips right sides together with side fronts, over lines marked for zips. Work from wrong side to stitch along marked lines. Trim seam allowances and clip diagonally into corners. Turn facings to inside. Press edges. Pin zips under faced pocket opening edges so that zip teeth are visible and second zip tape extends as seam allowance. Edgestitch zips in place. Turn in ends of second zip tapes. Stitch centre fronts to side fronts and to zip tapes. Press seam allowances of section seams open. Stitch pocket lining pieces to front zip tapes and press forward. Topstitch centre fronts close to pocket opening edges. Stitch fabric pocket pieces to side zip tapes. Trim pocket pieces even and stitch together.

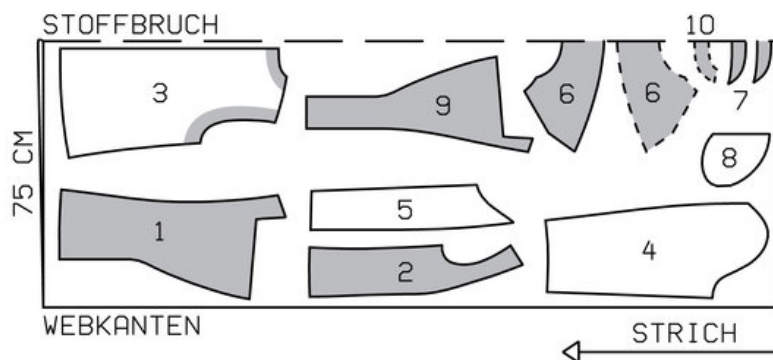
Step 4 — Section seams and pockets

Stitch centre back seam, side seams, shoulder seams, and facing seams.

Step 5 — Section seams and pockets

Turn in top ends of separating zip tapes. Separate the zip. Baste right half of zip, face down, to front edge of right centre front (right fabric side), below slit mark, so that zip teeth lie on garment piece and zip tape lies on the seam allowance.

Step 1 — Preparation



102 36-44
WOLLTUCH

Trace the pattern pieces from the pattern sheet. Follow lines and details for style 102. Trace the facing from piece 11 as a separate pattern piece.

The back loops are marked on piece 11 for size 36. For the other sizes, \hat{A} —move the markings according to the size lines.

Seam and hem allowances:

Seams and edges 1.5 cm (5/8 in), hem and sleeve hems 4 cm (15/8 ins), lining 1.5 cm (5/8 in).

Step 6 — Notched collar and front edges

Pin facing right sides together with jacket. Pin lapel fold lines together. Build a little extra fullness into corners of lapels. Stitch facing to front edges and edges of lapels, to marking, catching zip at right front edge. Leave facing lying right sides together with jacket for now. Stitch collar band pieces to collar pieces. Trim seam allowances and press open. Topstitch close to seams. Lay collar pieces right sides facing and pin outer edges together, building a little extra fullness into top collar. Stitch outer edges together from marking (seam number 4). Trim seam allowances. Turn collar right side out and press. Lay collar between jacket and facing. Stitch undercollar to neck edge of jacket and stitch top collar to facing. Clip seam allowances of front and facing into corners. Press seam allowances of collar joining seams open. Turn facing to inside. Pin collar joining seams together exactly. Lay back facing up and stitch seam allowances together, close to collar joining seam. Lay facing down.

Step 7 — Notched collar and front edges

Unfold facings at hem. Press hem allowance to inside but do not yet sew in place. Lay facings to inside again.

Step 8 — Notched collar and front edges

Stitch sleeve seams. Press sleeve hem allowances to inside and sew by hand.

Step 9 — Notched collar and front edges

Set in sleeves, easing sleeve caps

Step 10 — Line jacket, hem

Stitch seams of lining. Set in sleeve linings. Stitch \hat{A} -lining to inside edges of facing, laying hem allowance down. Lay lining inside jacket with wrong sides facing. Pull linings into sleeves. Lay hem allowance to inside again and sew in place by hand. Turn in lining along lower edge of jacket. Press the fold lightly, push upward in a shallow curve, and pin to hem allowance. Sew facings and lining in place. Lay extra length of lining down and press lightly. Turn in sleeve linings and sew to hem allowance.

Step 12 — Fur collar

Stitch centre seam of collar lining, leaving about 6 cm (23/8 ins) open in centre of seam for turning. Fold facings on fabric fold line and press. Baste facings to collar lining. Cut elastic cord into 7 equal pieces and form loops. Baste loops to collar lining as marked. Stitch collar lining right sides together with fur collar, pushing the hairs of the fur onto the collar. Trim seam allowances. Turn collar right side out. Sew seam opening closed. Lay fur collar on jacket and sew buttons to inside of jacket to match loops.

Step 11 — Close zip

Lay right front on left front, matching centres. Pin free zip tape in place on left front. Stitch left zip tape in place, close to teeth and close to edge of tape.

BurdaStyle

burda style magazine 01/2010 Jacket