

# burda style magazine 02/2010 Cropped, Wide Lapel Jacket

By: burda style magazine

<http://www.burdastyle.com/projects/burda-style-magazine-022010-c>

---

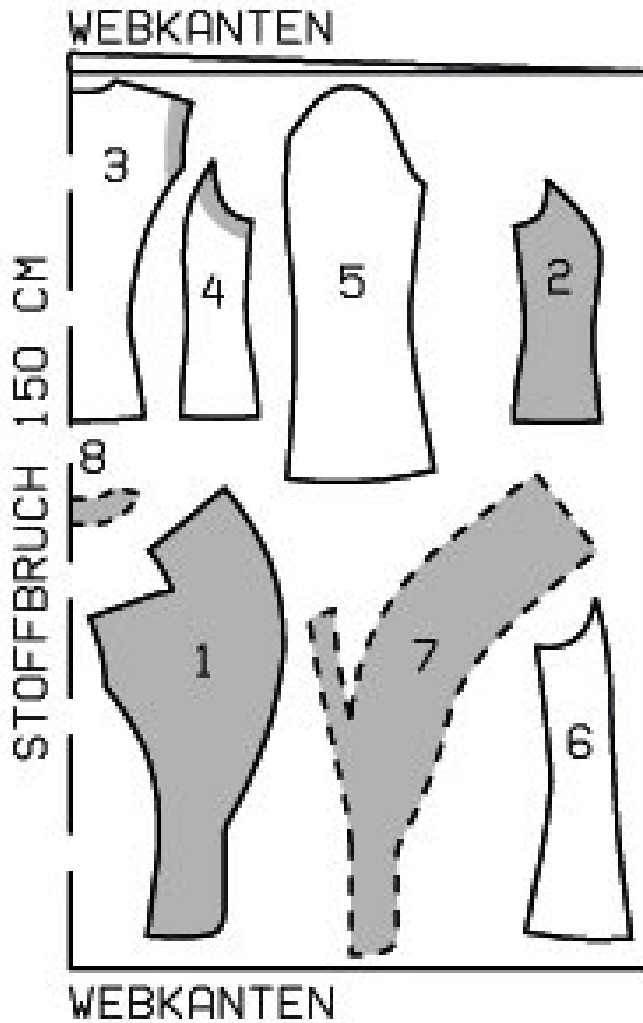
Cropped, Wide Lapel Jacket burda style magazine patterns FAQ

## Materials

Ribbed matelass

---

## Step 1 — Preparation



101 36-44

Trace the pattern pieces from the pattern sheet.

The markings for the snap fasteners on piece 7 are for size 36. Move both snaps down according to the hem line for the other sizes.

Seam and hem allowances:

Seams and edges 1.5 cm (5/8 in), hem and sleeve hems 3 cm (1 1/4 ins), lining 1.5 cm (5/8 in).

---

## Step 2 — Cutting Out



Matelass:

1centre front with integrated collar 2x

2side front 2x

3centre back, on a fold 1x

4side back 2x

5upper sleeve 2x

6undersleeve 2x

7front facing with top collar 2x

8back facing, on a fold 1x

Lining: piece 1 to lining line; piece 3 minus neck facing and at centre back with an ease pleat of about 2 cm (3/4 in); pieces 2, 4, 5 and 6.

Interfacing: See pattern layout. Also interface hem allowances.

---

### Step 3 — Front and Back Seams

Stitch front and back section seams. Stitch side seams. Press seam allowances open.

---

### Step 4 — Darts, Shoulder Seams, and Collar Pieces

Clip darts on fronts along centre about 10 cm (4 ins) long. Stitch shoulder seams, seam number 3. Stitch centre back seam of integrated collar pieces on fronts. Stitch collar to neck edge from centre back toward

each side, go on to stitch darts. Press seam allowances of collar joining seam open, press darts open. Press points of darts flat.

---

## **Step 5 — Darts and Pleats**

Stitch centre back seam on integrated collar pieces of front facings. Stitch back facing to shoulder edges of front facings. Clip seam allowance in centre between top collar and front facing to pleat fold of bottom pleat. Lay pleats in arrow direction and baste. Stitch facing to top collar, stitching from centre back toward each side, taper ends of seams like darts. Press seam allowances of collar joining seam open, press darts open.

---

## **Step 6 — Joining Seams**

Pin facings right sides together with jacket, pin collar pieces together. Stitch along edge of hem, front edges and edge of collar. At hem, leave the last 3 cm (1 1/4 ins) open to ends of facing. Turn facing to inside, turn collar right side out. Press faced edges. Pin collar joining seams together exactly. Lay back facing up and stitch seam allowances together close to collar joining seam. Lay facing down.

---

## **Step 7 — Hem Allowance**

Press hem allowance to inside.

---

## **Step 8 — Sleeves**

Stitch sleeve seams. Press sleeve hem allowances to inside and sew by hand.

---

## **Step 9 — Shoulder Pads**

Set in sleeves eased to fit. Sew in shoulder pads.

---

## **Step 10 — Lining**

Line jacket and hem. To stitch lining to facing, lay seam allowance at lower edges of facing down.

---

## **Step 11 — Snaps**

Sew top halves of snap fasteners to wrong side of right front as marked, taking even regular stitches and exiting needle on right side of fabric. Sew bottom halves of snap to left front to match.

---

**BurdaStyle**

burda style magazine 02/2010 Cropped, Wide Lapel Jacket