

06/2011 Peasant blouse

By: burda style magazine

<http://www.burdastyle.com/projects/062011-peasant-blouse>



Peasant blouse burda style magazine patterns FAQ</a

Materials

Gingham check

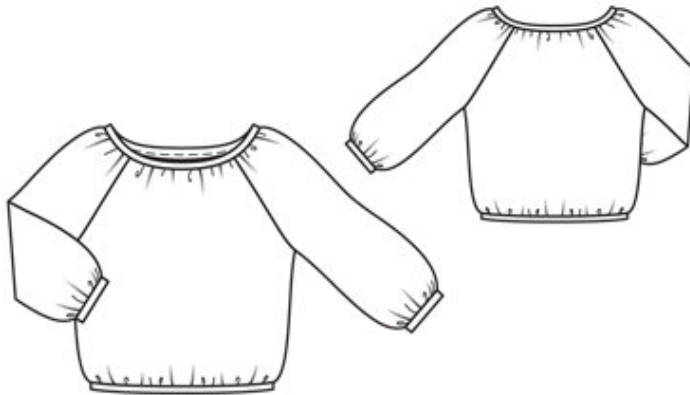
Step 1 — Preparation

Trace pieces from the pattern sheet.

Seam and hem allowances:

Seams and edges 1.5 cm (5/8 in).

Step 2 — Cutting out



Gingham check:

21front, on a fold 1x

22back, on a fold 1x

23sleeve 2x

a) neck band, cut on bias, 82 — 84 — 86 — 88 — 90 cm (32 1/2 — 33 — 34 — 34 3/4 — 35 1/2 ins) long, 3 cm (1 1/4 ins) wide, finished width 1.5 cm (5/8 in),

b) hem band, cut on bias, 94 — 98 — 102 — 106 — 110 cm (37 — 38 3/4 — 40 1/4 — 41 3/4 — 43 1/2 ins) long, 3 cm (1 1/4 ins) wide, finished width 1.5 cm (5/8 in),

c) 2 sleeve bands, cut on bias, 29 — 29 — 30 — 30 — 31 cm (11 1/2 — 11 1/2 — 12 — 12 — 12 1/4 ins) long, 3 cm (1 1/4 ins) wide, finished width 1.5 cm (5/8 in).

Step 3 — Sleeves

Stitch side and sleeve seams. Trim allowances to 7 mm (1/4 in) wide, neaten together, and press onto back.

Step 4 — Sleeves to front and back

Stitch sleeves to front and back. Trim seam allowances and neaten together. Press allowances of sleeve attachment seams toward sleeve, up to beginning of underarm curve.

Step 5 — Neck

Gather neck edge: to 29.5 â— 30 â— 30.5 â— 31 â— 31.5 cm (113/4 â— 12 â— 121/8 â— 121/4 â— 121/2 ins) on front, to 17.5 â— 18 â— 18.5 â— 19 â— 19.5 cm (7 â— 71/8 â— 71/4 â— 71/2 â— 73/4 ins) on each sleeve, and to 17.5 â— 18 â— 18.5 â— 19 â— 19.5 cm (7 â— 71/8 â— 71/4 â— 71/2 â— 73/4 ins) on back. Stitch ends of neck band together. Fold in half, wrong side facing in, and press. Stitch edges of band together to neck edge. Trim seam allowances to 7 mm (1/4 in) wide and neaten together. Turn band up over joining seam and press.

Step 6 — Hem

Gather lower edge of blouse to 94 â— 98 â— 102 â— 106 â— 110 cm (37 â— 383/4 â— 401/4 â— 413/4 â— 431/2 ins). Sew hem band and attach as for neck band.

Step 7 — Sleeve bands

Gather lower sleeve edges to match sleeve bands. Sew sleeve bands and attach as for neck band.

BurdaStyle

06/2011 Peasant blouse