

Ute

By: burdastyle

<http://www.burdastyle.com/projects/ute--2>



The Ute blouse comes in two variations. The one pictured here is Variation A. It has a Peter Pan collar (Variation B has a tie that can make a bow, a knot, whatever you desire). Additionally you have two different kinds of sleeves to choose from. You can make either a simple sleeve with a bit of fullness on the cap and no

cuff, or a Peter Pan cuff like the one pictured here. That's what we were inspired by when we created this blouse!

Materials

Light weight cotton print, 5 x buttons, Interfacing

Step 1

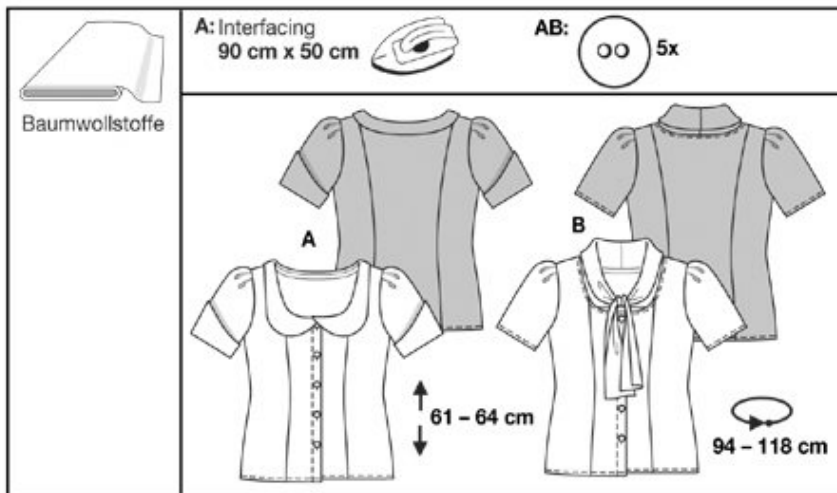


easy

semi-fitted

burda sizes		55 ins / 140 cm						
		34	36	38	40	42	44	46
A	yds	1 ¹ / ₄	1 ¹ / ₄	1 ⁷ / ₈	2 ¹ / ₈	2 ¹ / ₈	2 ¹ / ₈	2 ¹ / ₈
	m	1.50	1.50	1.70	2.10	2.10	2.10	2.10
B	yds	2 ¹ / ₈	2 ¹ / ₈	2 ¹ / ₈	2 ¹ / ₈	2 ¹ / ₈	2 ¹ / ₈	2 ¹ / ₈
	m	2.40	2.40	2.40	2.40	2.40	2.40	2.40

* without nap

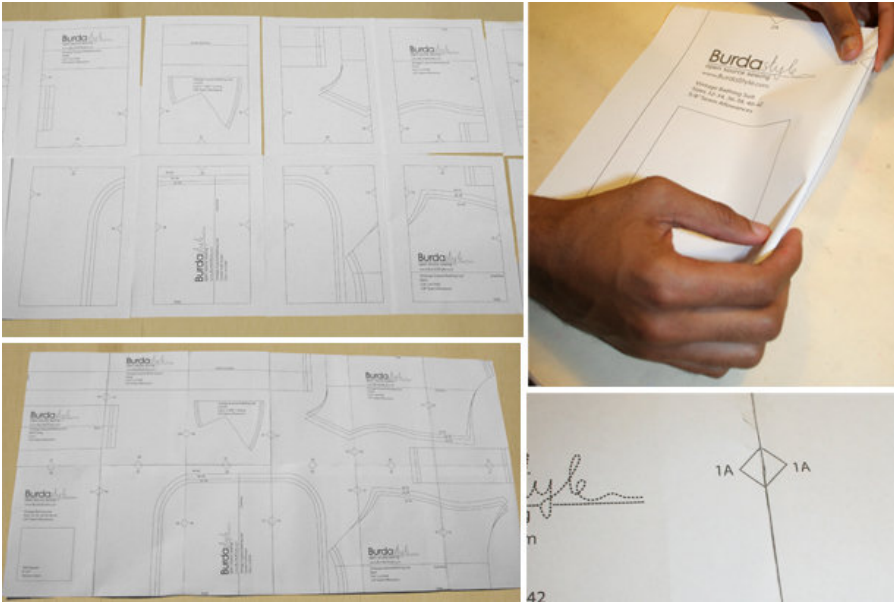


PATTERN

- A B 1 Center front piece 2x
- A B 2 Side front piece 2x
- A B 3 Center back piece 1x
- A B 4 Side back piece 2x
- A B 5 Bias strips / neckline 1x
- A B 6 Sleeves 2x
- A 7 Sleeve cuff 4x
- A 8 Collar 2x
- B 9 Tie collar 2x

Fabrics: Cotton fabrics

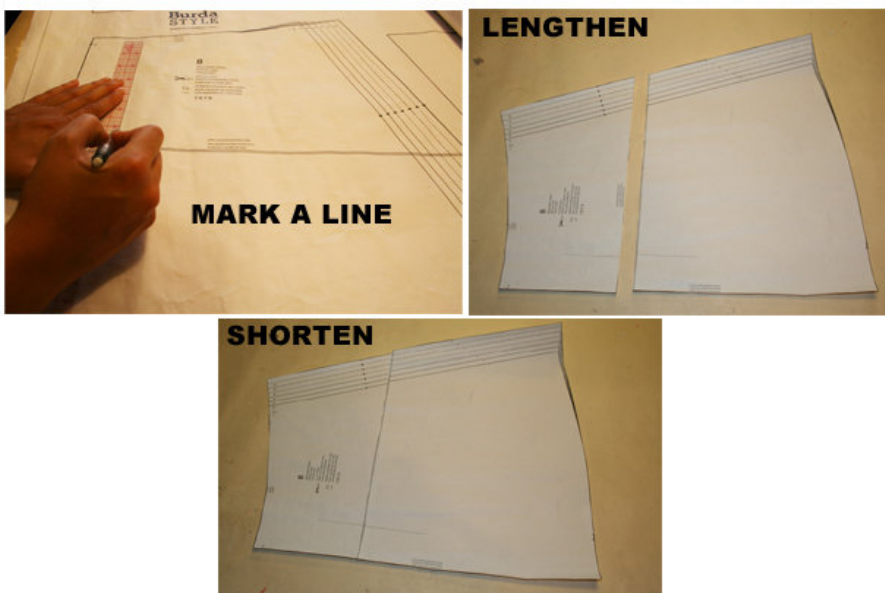
Step 2



The patterns can be printed out at the copy shop. If you decide to print them at home, follow the instructions: Paper cut for ANSI A (German DIN A4) prints:

The patterns are printed out on 30 sheets with a thin frame. Wait until all sheets are printed out. Arrange the sheets so that they fit together (see additional page with the overview of the prints). Fold the single sheets on the upper and right edge along the thin frame lines. Begin with the left lower sheet and then tape the frame lines together precisely.

Step 3



ADJUST PATTERN SIZES

Select your size according to the Burda-dimension table: dresses, blouses, jackets and coats according to the bust size, trousers and skirts according to the hip width. Change the pattern to fit your measurements if they

deviate from the Burda-size chart. Cut out the pattern according to your size.
Refer to our 'Adjust patterns for mixed sizes' technique

Size 4 (EU 36) to size 14 (EU 46)

The button holes on piece 1 are marked according to size 2 (EU 34). For all sizes, the top and bottom button holes are marked in the same place on the garment. Space the button holes in between the top and bottom button holes equally.

LENGTHENING OR SHORTENING THE PATTERN PIECES

Our pattern is calculated for a height of 5' 6" (168 cm). If you are taller or shorter, you can adjust the pattern pieces along the lines marked "lengthen or shorten here". This way the proper fit is maintained. Always adjust all pattern pieces along the same line to the same degree.

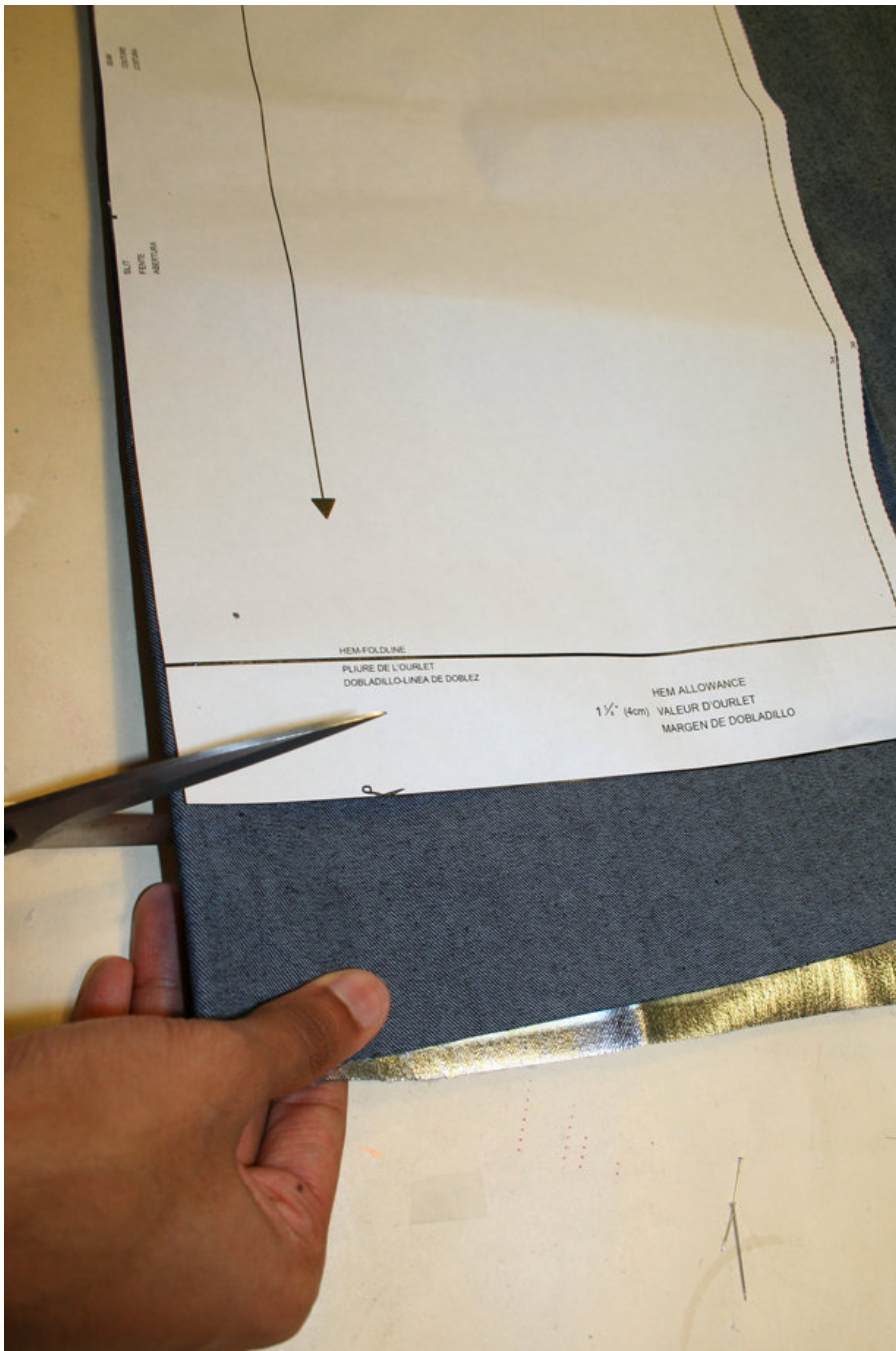
How to lengthen and shorten pattern pieces:

Cut the pattern pieces along the marked lines

To lengthen, slide the two halves of the pattern piece as far apart as necessary.

To shorten, overlap the two halves of the pattern piece as far as necessary. Blend the side edges.

Step 4



CUTTING OUT

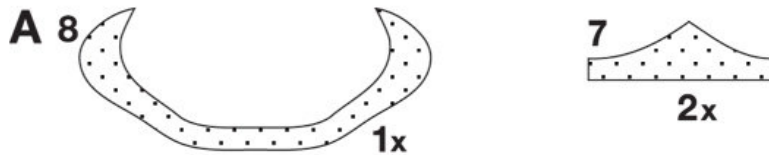
FOLD (â’ â’ â’ â’) means: Cut on the fold, the fold being the center of the pattern piece, but never a cut edge or seam. The piece should be cut double, with the fold line forming the center line. Pattern pieces that are outlined with a broken line in the cutting diagrams are to be placed face down on the fabric. The cutting diagrams on the pattern sheet show how the pattern pieces should be placed on the fabric.

The cutting diagrams show the placement of the pattern on the fabric.

For a single layer of fabric, the pattern pieces are pinned to the right side. For double layers of fabric, the right sides are facing and the pattern pieces are pinned to the wrong side. The pattern pieces that are shown extending over the fold of the fabric in the cutting diagram should be cut last from a single layer of fabric.

Step 5

INTERFACING



SEAM AND HEMLINE ALLOWANCES are included on an average: 5/8" (1.5 cm) for all edges and stitches. Using BURDA copying paper, transfer the lines and signs of the pattern onto the wrong side of the fabric. Instructions can be found in the packaging.

A – THIS IS ONLY NEEDED FOR VARIATION “A”

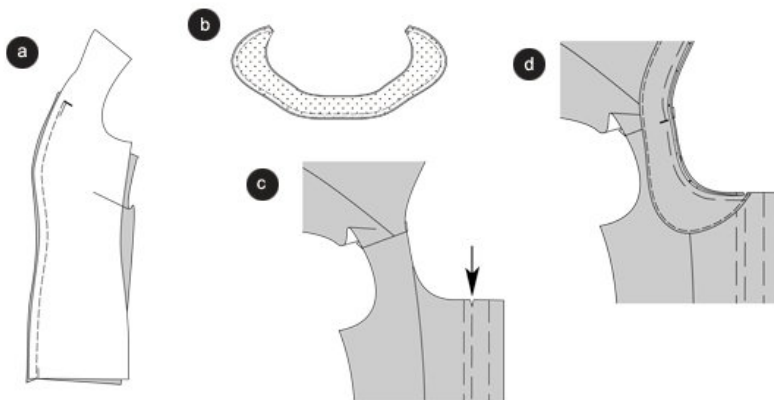
Interfacing

Cut the interfacing according to the drawing and press onto the wrong fabric side.

Sewing

While sewing, the right sides of the fabric are facing. Transfer all lines of the pattern onto the right side of the fabric using basting stitches.

Step 6



USE THE FOLLOWING INSTRUCTIONS FOR BOTH VARIATION “A” AND “B”

Blouse

Front princess seams

Position the side front pieces on the center front pieces, right sides facing. Pin the princess seams, starting at the cross line, to the bottom (seam 1) and stitch. Trim allowances, neaten and press inside the center front pieces (a).

Pin the back princess seams (seam 2) and stitch. Trim allowances, neaten and press inside the center back piece.

Shoulder seams

Position the front pieces onto the back pieces, right sides facing. Pin the shoulder seams (seam 3) and stitch. Neaten allowance, fold and press.

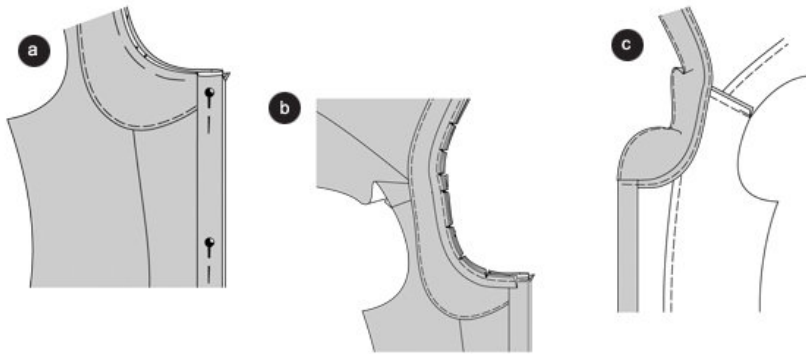
VARIATION A COLLAR – USE THE FOLLOWING INSTRUCTIONS AND CORRESPONDING IMAGES ONLY FOR OPTION “A” NECKLINE

Collar

Position the collar pieces together, right sides facing. Pin the edges together according to the drawing and stitch. Trim allowances. Turn the collar. Pin the edges and topstitch narrowly. Pin the open edges together (b).

Snip in the neckline allowances along the fold line of the facing (arrow). Pin the collar onto the neckline, right sides facing (seam 5), the cross lines meet the shoulder seams (3a). Trim the allowances of the neckline (blouse and collar) to $\hat{\text{a}}$ (1 cm) ©.

Step 7



VARIATION A FRONT EDGES – USE THE FOLLOWING INSTRUCTIONS AND CORRESPONDING IMAGES ONLY FOR OPTION “A” NECKLINE

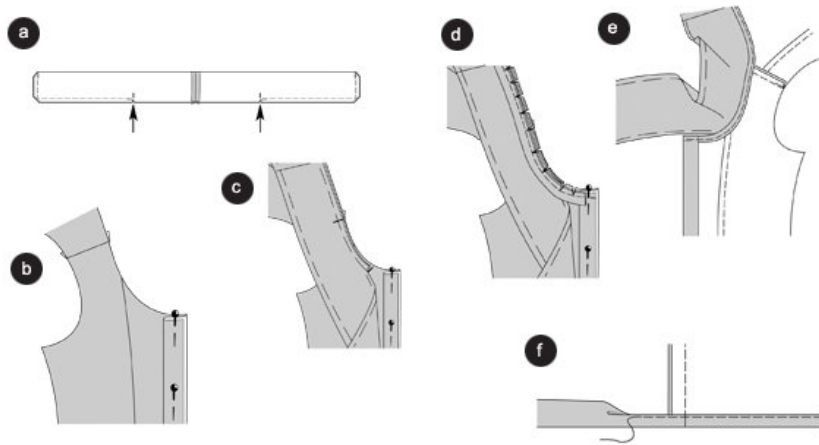
Front edges

Fold the front pieces along the fold line inside and press. Along the fold line of the facing, turn outside and pin onto the collar. Fold the bias strips in half and press with wrong side of the fabric on the inside (a).

Pin the bias strips above the collar onto the neckline. Position the open edges of the strips onto the allowance. Stitch the bias strip ends $\hat{\text{a}}$ deep onto the facing, thereby stitching the collar. Trim the allowances and snip in (b).

Turn the facing and the bias strips inside, pin. Turn the collar inside the neckline. Stitch $\hat{\text{a}}$ (0.7 cm) along the collar seam; thereby stitching the bias strips and the facing ©.

Step 8



VARIATION B COLLAR/FRONT EDGES – USE THE FOLLOWING SECTION FOR OPTION “B” NECKLINE

Tie collar / front edges

Position the collar pieces together, right sides facing. Stitch center seam. Press the allowances apart.

Fold the tie collar along the fold line, right side inside. Stitch together the narrow edges and long edges up to the marked cross lines (seam 6). Secure seam ends. Snip in the allowances up to the seam ends (arrows). Fold the collar. Turn the collar, pin and press. Pin the open edges together (a).

Press the front pieces along the fold line inside. Along the facing fold line, turn the pieces to the outside and pin onto the neckline (b).

Pin the collar onto the neckline, right sides facing. The notches meet the cross lines (seam 6). The cross lines on the collar meet the shoulder seams. Trim the allowances along the neckline to \hat{a} (1 cm). Fold the bias strips in half lengthwise and press, wrong side inside ©.

Pin the bias strips onto the neckline above the collar and continue to the facing. The open edges of the strips are positioned on the allowances. Stitch the bias strip ends \hat{a} deep onto the facing, thereby stitching the collar between the notches. Trim allowances and snip in (d).

Turn the facing and the bias strips inside and pin. Position the collar inside the neckline. Stitch the collar seam and continue stitching from the neckline to the front edge \hat{a} (0.7 cm) wide. Topstitch the bias strips and the facing (e).

THE FOLLOWING SECTION IS FOR BOTH OPTIONS “A” AND “B”

Stitch the front edges \hat{a} (3 cm) wide, thereby stitching the facings.

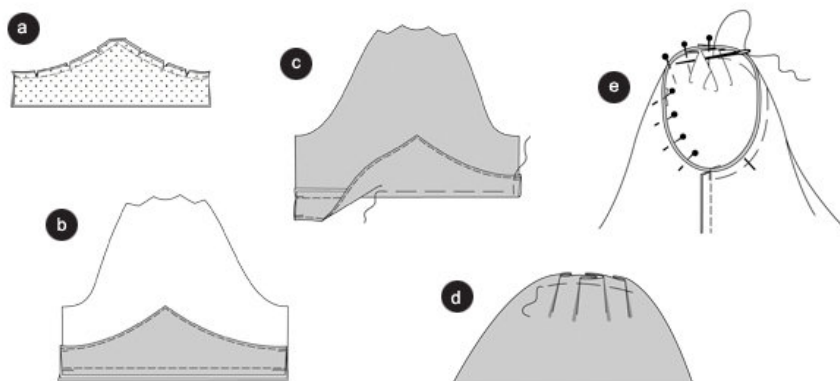
Side seams

Position the front piece onto the back piece, right sides facing. Pin the side seams (seam 4) and stitch. Trim allowances, neaten and press inside the back piece.

Hemline

Fold the hemline inside and press, fold again and pin. Stitch the hemline narrowly (f).

Step 9



VARIATION A SLEEVE CUFFS – USE THE FOLLOWING SECTION FOR OPTION “A” CUFFS

Sleeve cuffs

Position 2 cuff pieces together with interfacing, the other without (a).

Position the cuff onto the sleeve, the right cuff side faces the wrong sleeve side. Pin the bottom edges together and stitch (seam 7). Trim allowances and neaten (a). Turn the cuff outside, pin and press (b).

USE THE FOLLOWING SECTION FOR BOTH OPTIONS “A” AND “B”

Sleeve

Position the pleats along the sleeve cap, on the right side of the fabric, according to the arrows. Pin them along the top edge. Fold the sleeves lengthwise, right sides inside. Stitch sleeve seams (seam 8). Neaten allowances and press ©.

A: stitch the allowance along the bottom sleeve edge \hat{a} (1 cm) wide.

B: stitch the sleeve hem.

Apply the sleeves

Pin the sleeves onto the armhole, the right sides facing. When applying 3 points are to be considered for the right \hat{a} fit \hat{a} . The cross lines 9 of the sleeve and front piece have to meet. The sleeve seams and side seams have to meet. The cross line of the sleeve gap has to meet the shoulder seam. Apply the sleeve to the armhole through pinning on the wrong side, stitch. Trim allowances, neaten and press inside the sleeve (d).

Work BUTTON HOLES into the right front piece. Sew the BUTTONS accordingly onto the center of the left front piece.

BurdaStyle

Ute