

Michelle

By: burdastyle

<http://www.burdastyle.com/projects/michelle>



Dress up for all the holiday events with this super cute flattering a-line skirt. Get sparkling and glamorous with some sequined ribbons or fabrics. This is a quick pattern for your special night out! Give it your special touch with a unique combination of fabrics and ribbons.

Materials

lightweight cotton fabrics, linen blends, viscose rayon

Step 1

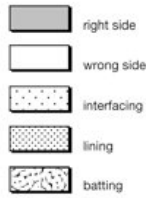
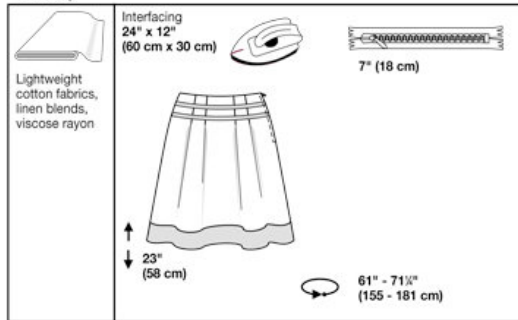
burda Download-Pattern Skirt 8090 - Instructions

●●□□
easy

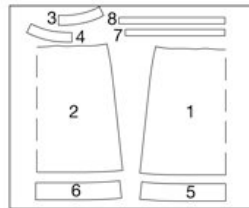
semi fitted

burda sizes	45 ins / 114 cm								55 ins / 140 cm							
	36	38	40	42	44	46	48		36	38	40	42	44	46	48	
A	1 1/4	1 1/4	1 1/4	1 1/4	1 1/4	1 1/4	1 1/4	1 1/4	1 1/4	1 1/4	1 1/4	1 1/4	1 1/4	1 1/4	1 1/4	1 1/4
	1.45	1.45	1.45	1.45	1.45	1.45	1.45	1.30	1.30	1.30	1.30	1.30	1.30	1.30	1.30	1.30
A	Contrasting fabric															
	1/2	1/2	1/2	1/2	1/2	1/2	1/2	1/2	1/2	1/2	1/2	1/2	1/2	1/2	1/2	1/2
	0.40	0.40	0.40	0.40	0.40	0.40	0.40	0.40	0.40	0.40	0.40	0.40	0.40	0.40	0.40	0.40

→ with nap



Patternpieces:



- 1 Front skirt panel 1x
- 2 Back skirt panel 1x
- 3 Front facing 1x
- 4 Back facing 1x
- 5 Front placket / Hem 1x
- 6 Back placket / hem 1x
- 7 Strip I 2x
- 8 Strip II 2x

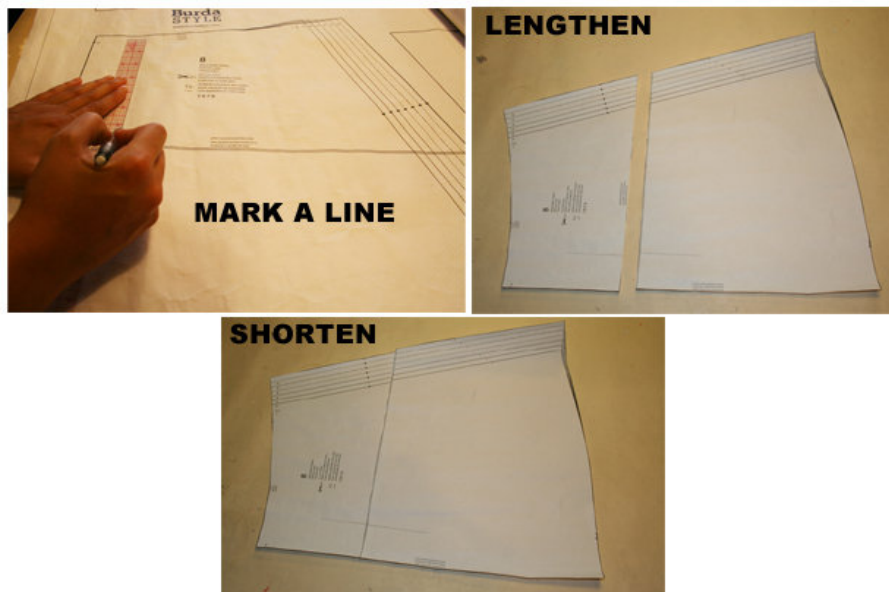
Step 2



The patterns can be printed out at the copy shop. If you decide to print them at home, follow the instructions:
Paper cut for ANSI A (German DIN A4) prints:
The patterns are printed out on 20 sheets with a thin frame. Wait, until all sheets are printed out. Arrange the

sheets so that they fit together (see extra page with the overview of the prints). Cut off the single sheets on the upper and right edge along the thin frame lines. Begin with the left lower sheet and then glue the parts in the frame lines together precisely.

Step 3



ADJUST PATTERN SIZES

Select your size according to the Burda size chart: Dresses, blouses, jackets and coats according to the bust size, trousers and skirts according to the hip width. Change the patterns according to size (inches or cm) if necessary, to fit your measurements if they deviate from the Burda size chart. (a)

Cut out the pattern according to your size. Top skirt edge = 1" (2.5 cm) below the waist

Refer to our "Adjust patterns for mixed sizes" technique

LENGTHENING OR SHORTENING THE PATTERN PIECES

Our pattern is calculated for a height of 5'6" (168 cm). If you are taller or shorter, you may adjust the pattern to fit your size at the lines marked "lengthen or shorten here". Thus the fit is preserved.

Make sure that you adjust all pieces of one model by the same amount at the same lines. (b)

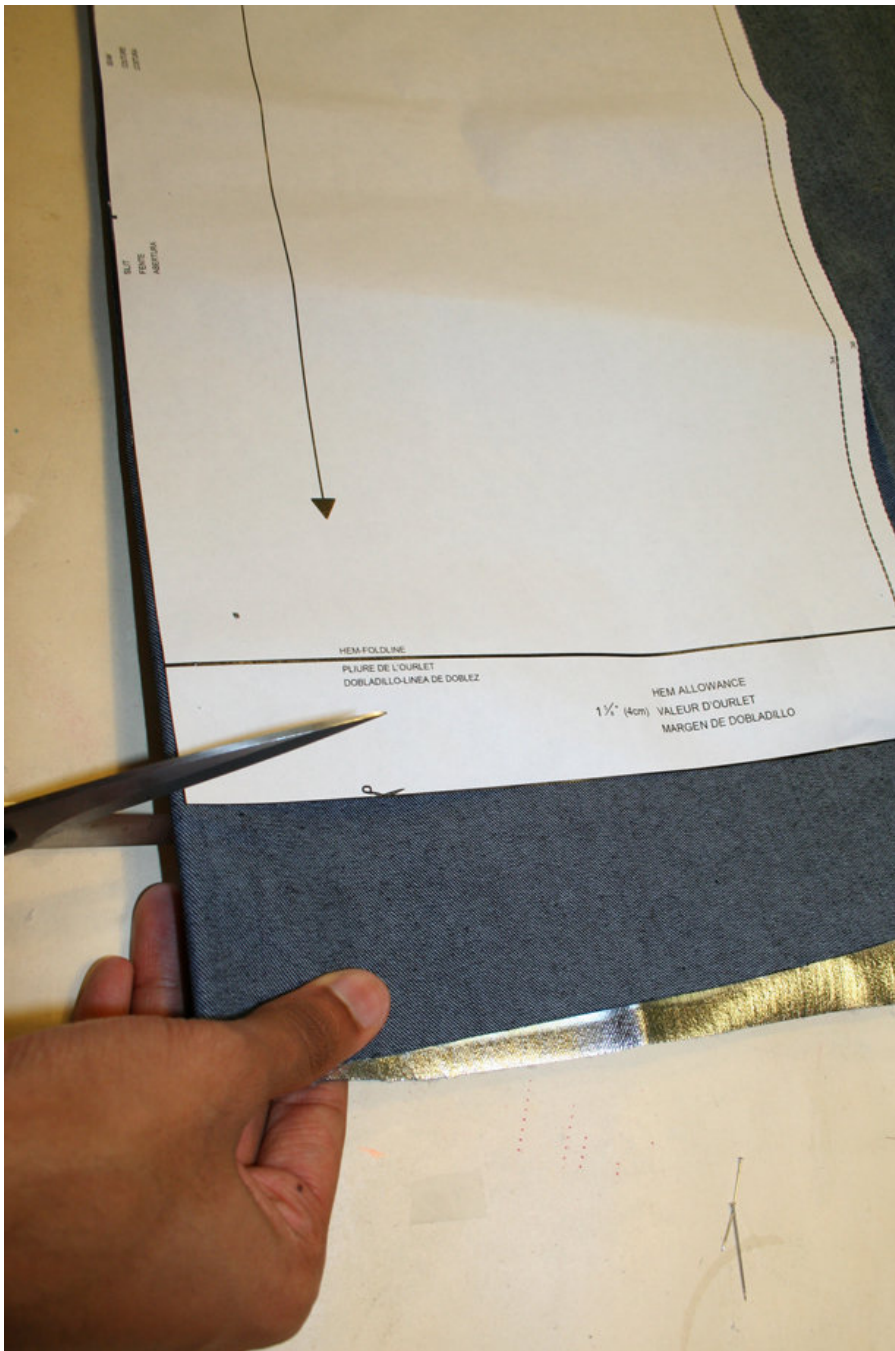
How to lengthen and shorten pattern pieces:

Cut the pattern pieces along the marked lines.

To lengthen, slide the two halves of the pattern piece as far apart as necessary.

To shorten, overlap the two halves of the pattern piece as far as necessary. Even out the side edges. ©

Step 4



CUTTING OUT

FOLD () means: here is the center of a pattern piece but never a cut edge or a seam. The piece should be cut double, with the fold line forming the centre line. Pattern pieces that are outlined with a broken line in the cutting diagrams are to be placed face down on the fabric. (a)

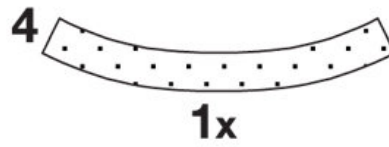
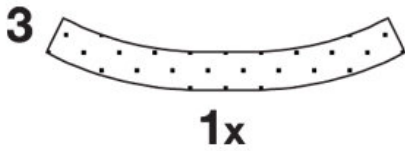
The cutting diagrams on the pattern sheet show how the pattern pieces should be placed on the fabric. For a single layer of fabric, the pattern pieces are pinned to the right side of the fabric. For double layers of fabric, the right sides are facing and the pattern pieces are pinned to the wrong side. The pattern pieces that are shown in the cutting diagram, extending over the fold of the fabric, should be cut last from a single layer of fabric.

Important: Trim the skirt pattern pieces from the single layer of fabric, the pattern pieces are pinned to the

right side of the fabric, the labeled pattern side on top = see cutting diagram. (b)

Step 5

INTERFACING



SEAM AND HEMLINE ALLOWANCES are included on an average: 5/8" (1.5 cm) for all edges and seams. Use BURDA carbon paper to transfer all pattern lines and markings to the left side of the fabric pieces. You will find instructions in the packet.

Interfacing

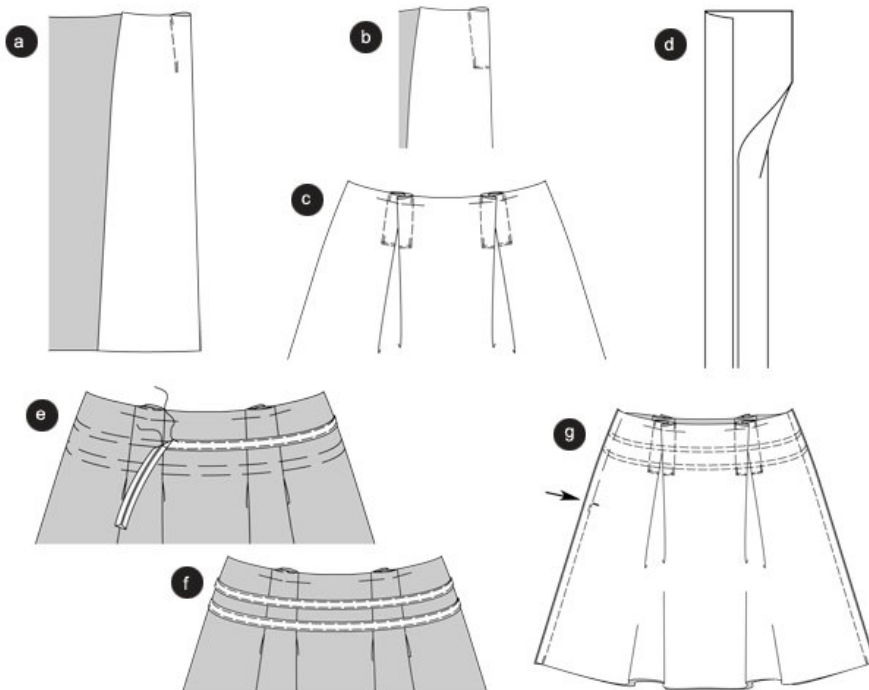
Cut interfacing according to drawing and press onto the wrong fabric side.

SEWING

When sewing the right fabric sides are facing.

Transfer all lines on the pattern using a basting stitch to the right fabric side.

Step 6



SKIRT
Pleats

Fold the front skirt panel in such a way that the pleat notches meet; right fabric side inside. Stitch on pleat lines from the top to the arrow and across pleat intake to create tuck pleats. (a)

Fold and press pleats intake inwards to corresponding pleat. Pin the top. Stitch the pleats of the back panels the same way and press. (b)

Strips

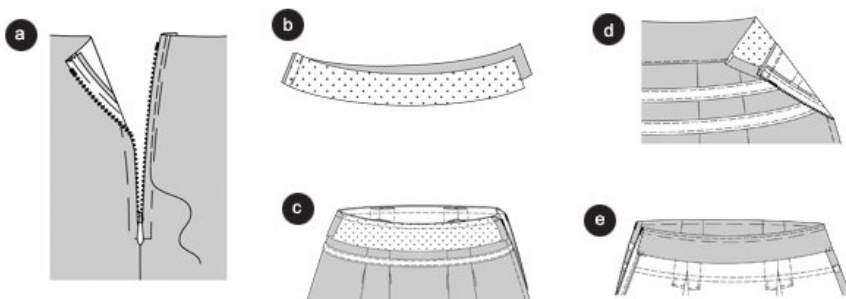
Press the lengthwise edges of the strips towards the center. ©

Baste strip I “ the marked lines meeting ” onto the front and back skirt panels and topstitch closely on both sides (d). In the same way, stitch strip II as marked in equal distances below (e).

Side seams

Position the front skirt panel onto the back skirt panel, right sides facing, baste side seams (seam 1), making sure the strips line up. Stitch right side seam. Stitch the left side seam from the slit (arrow) down to the hem. Secure thread ends. Keep slit basted. Trim allowances and press apart. (f)

Step 7



Zipper

Baste the invisible zipper under the slit edges. Stitch zipper using the zipper foot. (a)

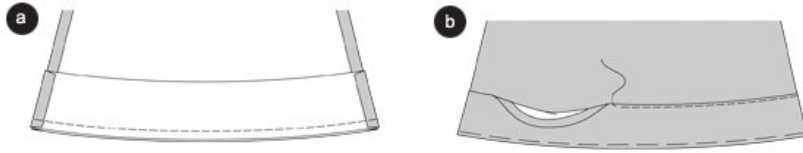
Top skirt edge / Facing

Position the front facing onto the back facing with the right sides facing, stitch the right side seam (reverse towards the skirt / seam 2). Press allowances apart. Neaten the bottom facing edge. (b)

Baste the facing onto the top skirt edge with the right sides facing; side seams meet. Fold the side facing edges inwards. Stitch facing around waist. Trim allowances. © Fold facing upwards, press allowances in towards the facing, and stitch in the ditch along the waist. (d).

Turn the facing inwards, press. Stitch side facing edges onto the zipper allowances and the allowances of the right side seam. (e)

Step 8



Placket / hem

Position front placket onto the back placket, right sides facing: stitch side seams (seam 3). Press allowances apart.

Baste the right fabric side of the placket onto the left fabric side of the bottom skirt edge; side seams meet. Stitch. Trim allowances. (a)

Turn the placket over towards the right skirt side. Baste bottom edges, press. Baste top placket edge at the marked line after folding it inwards. Topstitch close to the edge. (b)

BurdaStyle

Michelle