

burda style magazine - 1/2010 Empire Waist Dress

By: burda style magazine

<http://www.burdastyle.com/projects/burda-style-magazine-12010-e>

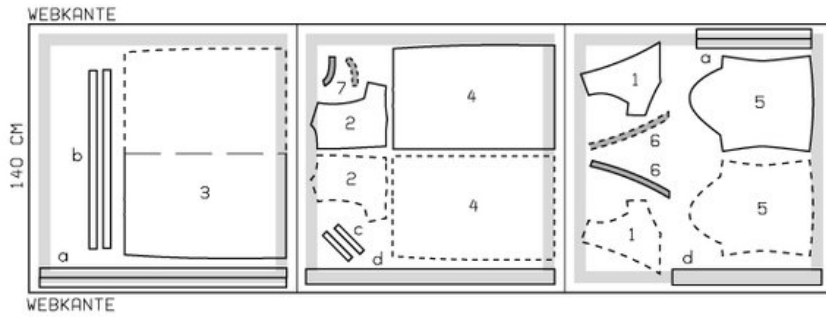


Empire Waist Dress burda style magazine patterns FAQ

Materials

Satin (scarf print) with crosswise stretch

Step 1 — Preparation



135 44-52

Trace the pattern pieces from the pattern sheet. Follow lines and details for style 135.

The frill joining lines on pieces 1 and 2 are marked for size 44. For sizes 46 — 52, remark the lines at the same width. The pleat arrows on piece 2 are marked for size 46. Remark the pleat arrows accordingly for the other sizes.

Seam and hem allowances:

Seams and edges 1.5 cm (5/8 in), hem 4 cm (15/8 ins).

Step 2 — Cutting Out



1 front 2x
2 back 2x
3 front skirt panel, on a fold 1x
4 back skirt panel 2x
5 sleeve 2x
6 front neck facing 2x
7 back neck facing 2x

- a) fabric strip for pleated frill, 2 pieces each 129 cm (50³/₄ ins) long, and 2 pieces, each 45 — 48 — 51 — 57 — 60 cm (17³/₄ — 19 — 20¹/₄ — 22¹/₂ — 23³/₄ ins) long, all 5 cm (2 ins) wide (incl. allowances),
b) 2 binding strips for lower edges of sleeves and tie bands, 90 cm (36 ins) long, 4 cm (1⁵/₈ ins) wide (incl. allowances),
c) 2 bias binding strips for sleeve vents, 19 cm (7¹/₂ ins) long, 3 cm (1¹/₄ ins) wide (incl. allowances),
d) tie band, one piece 120 — 122 — 125 — 128 — 129 cm (47¹/₄ — 48 — 49¹/₄ — 50¹/₂ — 50³/₄ ins) long, and one piece 65 — 67 — 70 — 73 — 78 cm (25³/₄ — 26¹/₂ — 27³/₄ — 28³/₄ — 30³/₄ ins) long, both 8 cm (3¹/₄ ins) wide, finished width 4 cm (1⁵/₈ ins).

Interfacing: Iron onto facing pieces.

Pleating:

Stitch each short frill strip to one long strip. Fold strips in half lengthwise and press, right side facing out. Stitch open long edges together, 5 mm (3/16 in) from edge, and neaten together. Have the strips commercially pleated: triple pleats, pleat width 1 cm (3/8 in).

Step 3 — Bust Darts

Stitch bust darts and press toward centre. Lay pleats in back pieces in arrow direction and baste.

Step 4 — Shoulder Seams

Stitch shoulder seams on dress and facing. Press seam allowances open.

Step 5 — Facings

Pin facings right sides together with neck edges. Stitch along neck edges. Trim seam allowances. Turn facings to inside and baste.

Step 6 — Pleats and Pleated Frills

Baste pleats of pleated frills to neaten lengthwise edges. Baste frills to neck edge of front and back pieces, 2 cm (3/4 in) from neck edges (joining line) — finished width of frills = 1.8 cm (a scant 3/4 in).

Step 7 — Petersham Ribbon

Pin petersham ribbon to neck edges of front and back pieces, 2 cm (3/4 in) from neck edges, catching frills. Edgestitch ribbon in place.

Step 8 — Stitching Right and Left Fronts and Bodice

Lay right front on left front, matching centres. Baste lower edges together. Stitch right front to left front along stitching line of petersham ribbon. Stitch side seams of dress bodice.

Step 9 — Laying pleats in skirt panels

Lay pleats in skirt panels in arrow direction and baste. Seam allowances at zip opening edges extend at back edges.

Step 10 — Stitching skirt to bodice

Stitch skirt to dress bodice. Press seam allowances up.

Step 11 — Zipper

Sew invisible zip to back opening edges,. Turn in top ends of zip tapes and sew in place. Stitch centre back seam from lower edge to zip.

Step 12 — Sleeves

Trim away allowance on lower edge of each sleeve. Slash sleeve vents as marked. Spread cut edges open to a straight line and stitch to one lengthwise edge of binding strip as narrowly as possible. Press binding strips over joining seams into vents, turn under edge to a width of 7 mm (1/4 in), and sew to inside, turned under along joining seams. Mitre binding at top of vent, on inside. Lay binding on both edges of vent to inside and baste

Step 13 — Sleeves, binding and bands

Stitch sleeve seams. Gather lower edge of each sleeve to 23 1/8 — 23 1/2 — 24 1/8 — 24 1/2 — 25 cm (9 1/8 — 9 1/8 — 9 1/2 — 9 1/2 — 10 ins). Fold binding strips in half lengthwise and press, right fabric side facing out. Unfold strips out flat again. Now turn each long edge in to pressed crease and press again. Unfold binding strips. Work from inside to stitch to lower edges of -sleeves, 1 cm (3/8 in) from edge (= inside the fold). Leave ends of binding extending evenly as tie bands. Turn binding out over lower edges of sleeves, turn in and pin. Fold tie bands in half, pin edges together, and turn ends in. Stitch edges of tie bands closed and edgestitch binding in place.

Step 14 — Sleeve Caps

Ease sleeve caps and stitch to front and back edges of armholes, from corner to corner. Clip seam allowances into corners. Stitch remainder of sleeve inset seams, from corner to corner.

Step 15 — Hem Allowance

Press hem allowance to inside and sew in place by hand.

Step 16 — Thread Loops

Make thread loops, about 5 cm (2 ins) long, at skirt joining seam, over side seams. For each loop, stretch 3— 4 threads and cÅ—over them with closely spaced buttonhole stitch.

Step 17 — Tie Band

Stitch tie band pieces together to form one long piece. Fold tie band lengthwise, right side facing in. Stitch lengthwise edges together, leaving about about 5 cm (2 ins) open in centre of seam for turning. Place seam in centre of band. Press seam allowances open. Trim ends of tie band each to a point and stitch closed. Turn tie band right side out. Sew opening closed. Fold tie band to half the length and mark centre front. Lay tie band on dress, over front skirt joining seam, and hand-sew to seam, between darts.

BurdaStyle

burda style magazine - 1/2010 Empire Waist Dress