

# 08/2010 Blouson Jacket

By: burda style magazine

<http://www.burdastyle.com/projects/082010-blouson-jacket>

---

Blouson Jacket burda style magazine patterns FAQ

## Materials

poplin

---

## Step 1 — Preparation

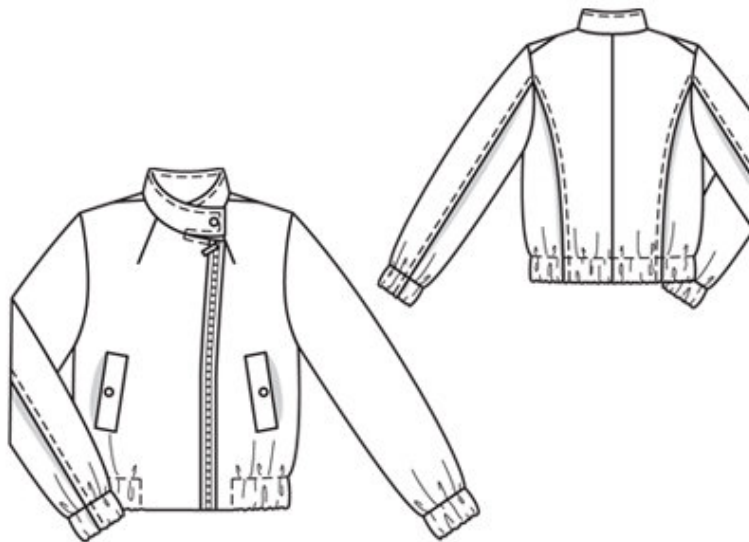
Trace the pattern pieces from the pattern sheet. Follow lines and details for style 104.

Seam and hem allowances:

Seams and edges 1.5 cm (5/8 in). Hem allowances are already included on pieces 21, 22 and 23.

---

## Step 2 — Cutting out



- 21 front 2x
  - 22 centre back 2x
  - 23 side back 2x
  - 24 front sleeve 2x
  - 25 back sleeve 2x
  - 26 front facing 2x
  - 27 back facing, on a fold 1x
  - 28 standing collar, on a fold 2x
  - 29 pocket piece 4x
  - (twice just to lining line)
  - a) 2 sleeve bands, 31 — 32 — 33 — 34 — 35 cm (12 1/4 — 12 3/4 — 13 — 13 1/2 — 13 3/4 ins) long, 12 cm (4 3/4 ins) wide, finished width 6 cm (2 3/8 ins),
  - b) 2 welts, 14 cm (5 1/2 ins) long, 8 cm (3 1/4 ins) wide, finished width 4 cm (1 5/8 ins).
- Interfacing: See pattern layout.
- 

### Step 3 — Darts

Stitch darts in fronts and press toward centre.

---

### Step 4 — Welt pockets

Sew welt pockets on fronts: Fold welts lengthwise, with right side facing in, and stitch across ends. Turn welts right side out. Stitch welts right sides together with marked joining line on fronts so that welts point forward. Lay larger pocket pieces on fronts opposite welts and stitch 1 cm (3/8 in) from welt joining seams. These seams should be about 5 mm (3/16 in) shorter at each end than the welt joining seams. Slash between lines of stitching and clip diagonally toward ends of seams. Do not cut into pocket pieces. Pull pocket pieces to inside. Press welts over pocket openings. Work from inside to stitch smaller pocket pieces to seam allowances of welt joining seams. Fold small triangles of fabric at pocket opening ends to inside and sew to pocket pieces. Trim pocket pieces even and stitch together. Bind all edges of pocket pieces with bias tape. Edge-stitch narrow edges of welts in place.

---

### Step 5 — French seam

Sew centre back seam as a — French seam — (double seam) with a seam allowance of 1.5 cm (5/8 in): First lay the fabric pieces wrong sides facing and stitch seam allowances together, 7 mm (1/4 in) from fabric edges. Press seam allowances open. Then lay the pieces right sides facing so that the seam lies exactly along the fold. Now stitch along marked seam line, 8 mm (a good 1/4 in) from fold edge. Press seam allowances to one side.

---

### Step 6 — Back

For each back section seam, first lay the side back piece right sides together with centre back piece and stitch the seam allowances together, 1 cm (3/8 in) from marked seam line. Press seam allowances open. Then lay the pieces wrong sides facing so that the seam lies along the fold. Stitch section seam 1 cm (3/8 in) from fold edge. Press seam allowances to the side.

---

## Step 7 — Sides and front

Stitch side seams and shoulder seams in the normal manner. Neaten seam allowances together. Press side seam allowances onto back and press shoulder seam allowances onto front.

---

## Step 8 — Facing

Stitch shoulder seams of facing. Press seam allowances open. Trim allowance on inside edge of facing to 7 mm (1/4 in) wide, neaten edge, press to inside, and stitch in place. Press inside edge of jacket hem allowance to inside, 8 mm (a good 1/4 in) wide. Lay facing right sides together with jacket. Stitch lower edge of facing to lower edge of jacket, exactly to corner. Lay facing down and stitch each inside edge of facing to hem allowance. Lay facing right sides together with fronts. Stitch along front edges and upper edge, to centre front. Trim seam allowances, trimming corners diagonally. Leave facing lying right sides together with jacket for now.

---

## Step 9 — Standing collar

Lay collar pieces right sides together. Stitch together along lower edge, from centre front, and across front ends and along upper edge of collar. Trim seam allowances and clip allowances at ends of stitching. Turn collar right side out. Lay collar between jacket and facing. Stitch outer collar piece to neck edge of jacket and stitch inside collar piece to facing. Press seam allowances open. Turn facing to inside. Pin collar joining seams together. Lay facing in back up again and stitch seam allowances together, close to collar joining seam. Lay facing down again and sew to shoulder seams. Topstitch 7 mm (1/4 in) from faced upper front edges and outer edge of collar.

---

## Step 10 — Hem allowance

Press hem allowance to inside on fold line. Stitch 6 cm (23/8 ins) from fold, as marked, to form elastic casing. Insert elastic. Stitch across ends for a finished length of 65 — 69 — 73 — 77 — 81 cm (253/4 — 271/4 — 283/4 — 301/2 — 32 ins).

---

## Step 11 — Zip

Measure front edges for the zip.

---

## Step 12 — Shorten zip

Shorten the zip at the top for sizes 34, 36, 38 and 42: Measure and mark required length on zip. Use pliers to remove the top stoppers and surplus teeth. Reattach the stoppers if your zip is made of metal and press firmly to secure. The stoppers of a plastic zip cannot be reused. Instead, sew heavy thread bars across the top of the zip tapes, to prevent the slider from slipping off. Trim zip tapes 2 cm (3/4 in) above the teeth.

---

## Step 13 — Zip

Sew zip in place: Turn in top ends of zip tapes. Separate the zip. Lay right half of zip on right front edge, on outside of garment, so that zip teeth extend. Stitch zip tape in place, next to teeth and close to edge of tape. Close zip. Lay right front on left front, matching centres. Pin free zip tape in place on left front. Stitch left zip tape in place, close to teeth and close to edge of band.

---

## Step 14 — Back sleeve

Sew back sleeve seams in the same manner as for back section seams. Stitch underneath sleeve seams in the normal manner.

---

## Step 15 — Sleeve bands

Stitch ends of each sleeve band together, leaving inside half of sleeve band open to insert elastic. Fold sleeve bands in half and press, wrong side facing in. Stitch edges of sleeve bands together to lower edges of sleeves. Press seam allowances up. Insert elastic into sleeve bands. Sew ends of elastic together, for a circumference of 21 — 21 — 22 — 22 — 23 cm (83/8 — 83/8 — 83/4 — 83/4 — 91/8 ins).

---

## Step 16 — Sleeve caps

Set in sleeves, easing sleeve caps. Trim seam allowances of sleeve inset seams to 1 cm (3/8 in) wide and bind with bias tape.

---

## Step 17 — Collar

Insert one upper snap half in collar, 1.5 cm (5/8 in) from right end. Pin collar closed, matching centre fronts. Insert lower snap half in left end of collar to match upper half. Insert one upper snap half in each welt, centred and spaced 1.5 cm (5/8 in) from fold edge. Insert lower snap halves in jacket fronts, to match.

---

**BurdaStyle**

08/2010 Blouson Jacket