

12/2011 V-neck top

By: burda style magazine

<http://www.burdastyle.com/projects/122011-v-neck-top>



V-neck top burda style magazine patterns FAQ

Materials

Challis

Step 1 — Preparation

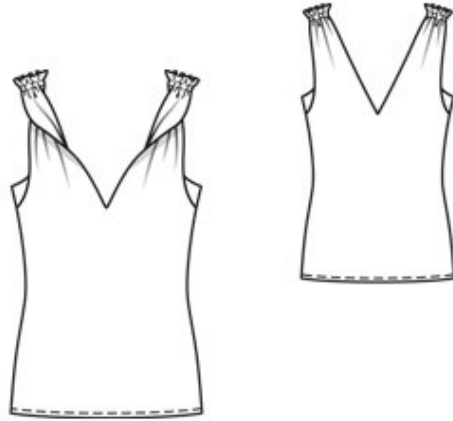


Paper cut for ANSI A (German DIN A4) prints:

This pattern is printed on 8.5 × 11 sheets of plain paper. Do not scale or center pages before printing. Wait until all sheets are printed out before beginning to tape them together. **Do not cut out pattern pieces yet**— Arrange the sheets on a large, hard, flat surface so that they fit together, matching up like numbers and letters (i.e. 6A to 6A). To tape pattern together, fold under the margin of one piece (6A) and tape right against the line of it's matching number/letter (6A).

burda style magazine pattern do not have seam allowance included.
Seam and hem allowances to be added: Seams and edges 1.5 cm (5/8 in).

Step 2 — Cutting out



1 front 1x
2 front facing 1x
2 back 1x
2 back facing 1x
3 side insert 4x

Interfacing: Iron strips of interfacing, approx. 2 cm (3/4 in) wide, to wrong side of fabric, over marked slash lines. Iron Vilene Bias Tape/stay tape to wrong side of front and back armhole edges and of upper edges of outer insert pieces.

Step 3 — Side seams

Stitch side seams (seam numbers 1 and 2), beginning and ending stitching exactly on marked armhole lines. Stitch side seams of facing in same manner. Stitch each side insert to front, from seam number 3 to corner, and to back, from seam number 4 to corner. Press seam allowances onto front and back. Press side seam allowances open. Stitch remaining insert pieces to facing in same manner. Press seam allowances onto facing.

Step 4 — Facings

Pull facing over garment, with right sides together. Pin armhole edges together. At centre front and centre back, pin slash lines together, from upper edge to marking. Stitch along armhole edges. At centre front and centre back, stitch closely around slash line, stitching horizontally across bottom end. Slash between lines of stitching and clip diagonally into bottom corners. On armhole edges, trim allowances and clip curves several

times. Turn facing to inside. Press edges. Baste upper facing edges in place. Sew inside edge of facing to side seams.

Step 5 — Shoulder seams

Gather upper front and back edges. To do this, machine baste (longest stitch setting) 5 mm (3/16 in) from edges and 2 mm (a scant 1/8 in) to each side of marked stitching line. Gather front and back along gathering threads, each to 4 1/8— 4 1/4— 4 1/2— 4 5/8— 4 5/8 cm (1 5/8— 1 5/8— 1 7/8— 1 7/8— 1 7/8 ins) long. Knot ends of thread and pull to inside. Twist upper front edges once, turning front slash edge to side and armhole edge to centre. Pin upper front and back edges together. Stitch gathered edges together between gathering threads, stitching 2 cm (3/4 in) from edge.

— Turn hem allowance to inside, turn raw edge under by half width, press, and stitch.

BurdaStyle

12/2011 V-neck top